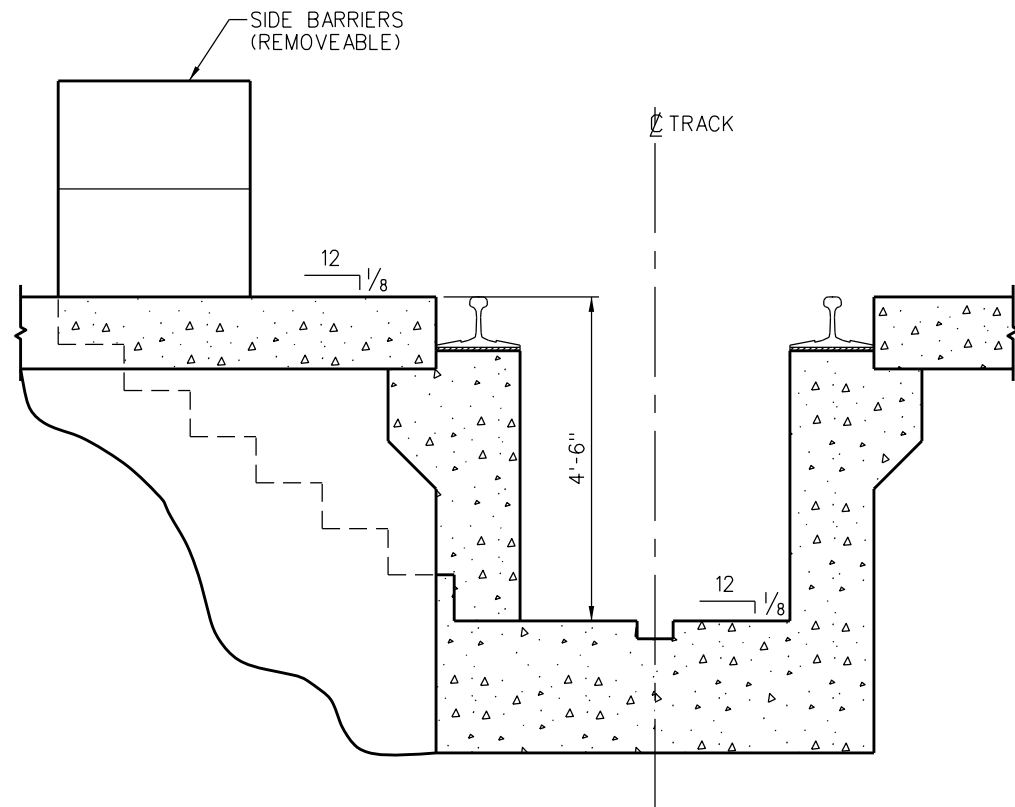
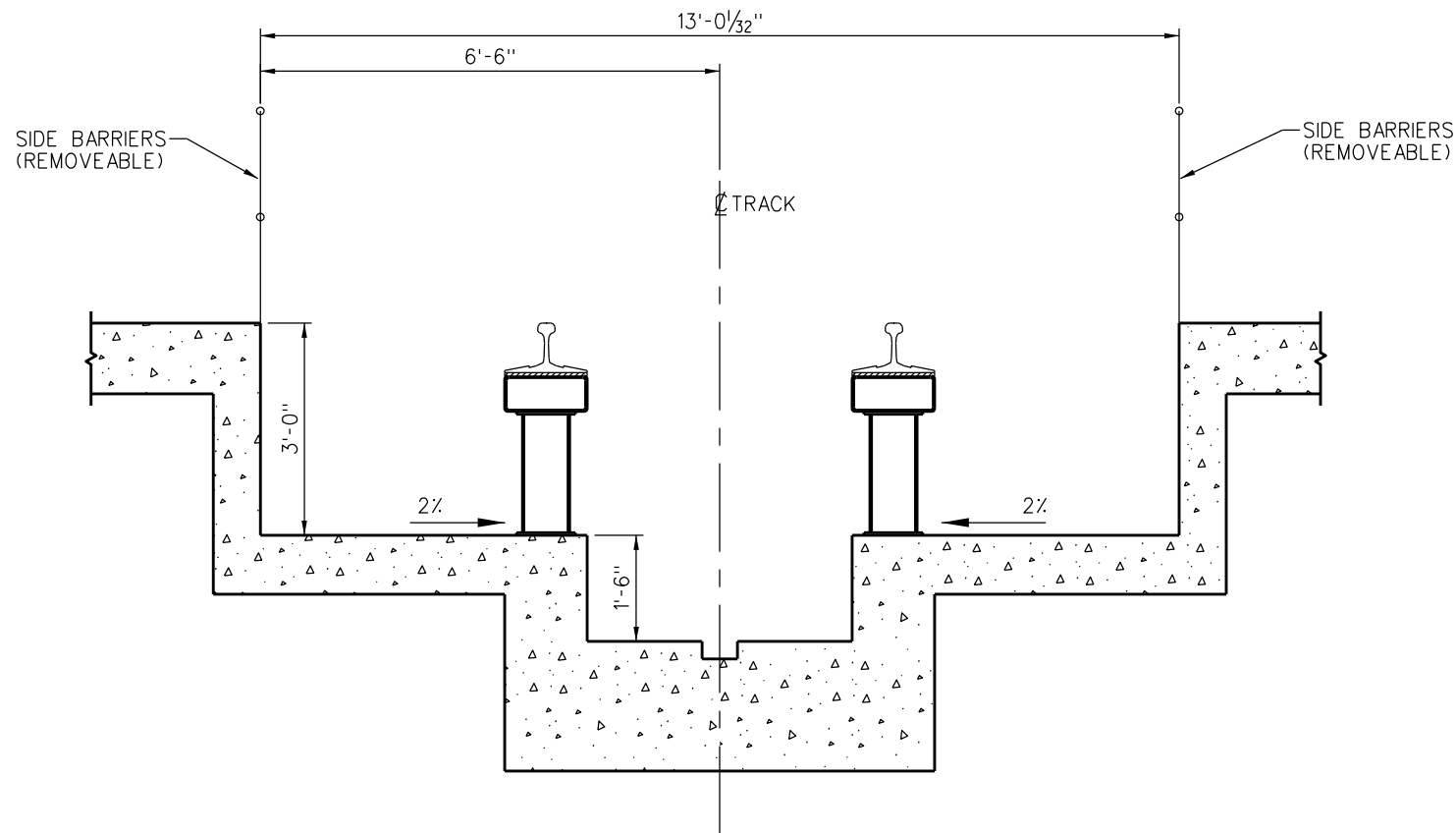


NOTES:

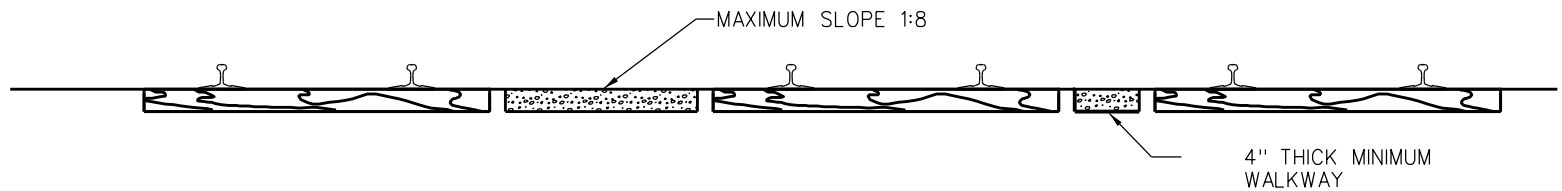
1. SIDE BARRIERS SHALL BE MAINTAINED IN PLACE EXCEPT MAY BE REMOVED WHEN ROLLING STOCK IS ON THE PIT TRACK. BARRIERS ARE TO BE REPLACED BEFORE ROLLING STOCK IS REMOVED FROM THE PIT TRACK.
2. WALKWAYS SHALL BE MAINTAINED AND KEPT FREE FROM VEGETATION.
3. IF PHYSICAL CONDITIONS REQUIRE THE MINIMUM REQUIRED WALKWAY WIDTH FOR NO. 1 TYPE WALKWAYS MAY BE REDUCED TO 2' MINIMUM UPON APPROVAL OF THE SCRRA DIRECTOR OF ENGINEERING & CONSTRUCTION.
4. FOR DETAILS OF STANDARD ROADBED SECTIONS REFER TO ES2001& ES2002.
5. BALLAST SHOULDER SHALL BE 9" FOR TIES 9'-0" OR GREATER IN LENGTH AND SHALL BE 12" FOR TIES LESS THAN 9'-0" IN LENGTH.



DROP PITS



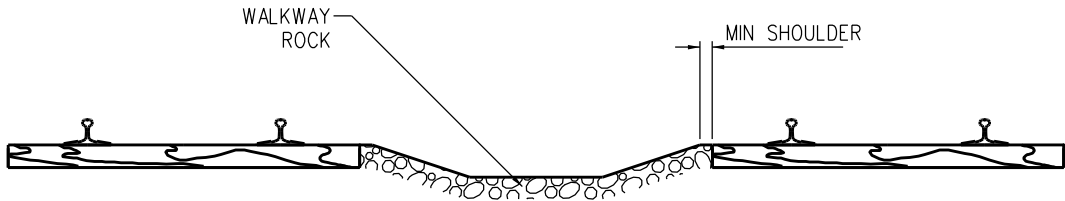
INSPECTION PITS



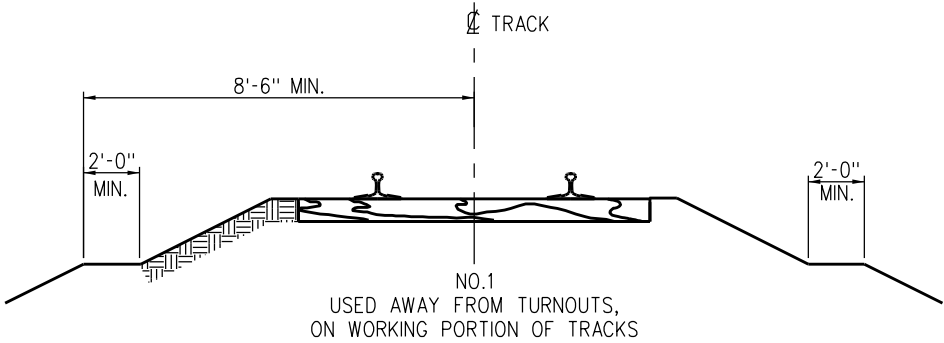
TYPICAL YARD TRACKS AT ENTRANCES TO BUILDINGS

				DRAWN BY: A. CARLOS		DATE: 03/31/2011		<div>SCRRA ENGINEERING STANDARDS ARE INTENDED FOR SCRRA APPROVED USES ONLY. FOR NON-SCRRA APPROVED USES: SCRRA SHALL NOT BE RESPONSIBLE FOR THE ACCURACY OR COMPLETENESS OF THE DATA OR INFORMATION CONTAINED HEREIN. THE SELECTION AND USE OF THESE STANDARDS IS THE SOLE RESPONSIBILITY OF THE USER AND SHOULD NOT BE USED WITHOUT CONSULTING A REGISTERED PROFESSIONAL ENGINEER. ALL WARRANTIES AND REPRESENTATIONS OF ANY KIND ARE DISCLAIMED. ANYONE MAKING USE OF THIS INFORMATION AGREES THAT IT ASSUMES ALL LIABILITY ARISING FROM SUCH USE. NO PART OF THESE STANDARDS SHOULD BE REPRODUCED OR DISTRIBUTED IN ANY FORM OR BY ANY MEANS WITHOUT THE PRIOR WRITTEN PERMISSION OF SCRRA. ALL RIGHTS RESERVED.</div>	<div>METROLINK[®]</div> <div>SOUTHERN CALIFORNIA REGIONAL RAIL AUTHORITY ONE GATEWAY PLAZA, 12TH FLOOR, L. A., CA. 90012</div>	ENGINEERING STANDARDS		STANDARD 7001	
										SCALE: NONE			
										REVISION SHEET			
										- 1 OF 2			
										CADD FILE:			
										ES7001-01			
X	XX-XX-XX	REVISION	XX	XX									
REV.	DATE	DESCRIPTION	DES.	ENG.									

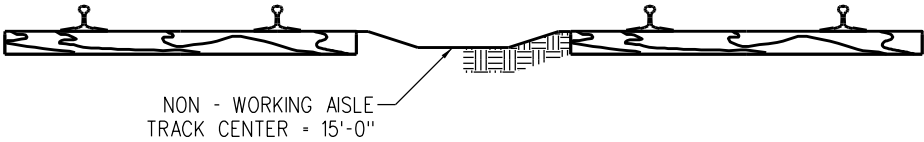
- NOTES:**
- 1. IN ALL CASES LATERAL CLEARANCE AND TRACK SPACING WILL MATCH CPUC G.O. 26-D EXCEPT ES7001 AND INSPECTION PITS.
 - 2. WALKWAYS SHALL BE MAINTAINED AND KEPT FREE FROM VEGETATION.
 - 3. IF PHYSICAL CONDITIONS REQUIRE, THE MINIMUM REQUIRED WALKWAY WIDTH FOR NO.1 TYPE WALKWAYS MAY BE REDUCED TO 2' MINIMUM UPON APPROVAL OF THE SCRRA DIRECTOR OF ENGINEERING & CONSTRUCTION.
 - 4. FOR DETAILS OF SCRRA STANDARD ROADBED SECTIONS REFER TO ES2001 & ES2002.
 - 5. BALLAST SHOULDER SHALL BE 9" FOR TIES 9'-0" OR GREATER IN LENGTH AND SHALL BE 12" FOR TIES LESS THAN 9'-0" IN LENGTH.
 - 6. WHERE PAVING IS USED WITH IN THE WALKWAY AREAS IT SHALL CONFORM TO THE DIMENSIONS AND SLOPES SHOWN FOR CRUSHED ROCK WALKWAYS.
 - 7. ROCKWAY ROCK SHALL BE CRUSHED ROCK IN COFORMANCE WITH AREMA STANDARDS.



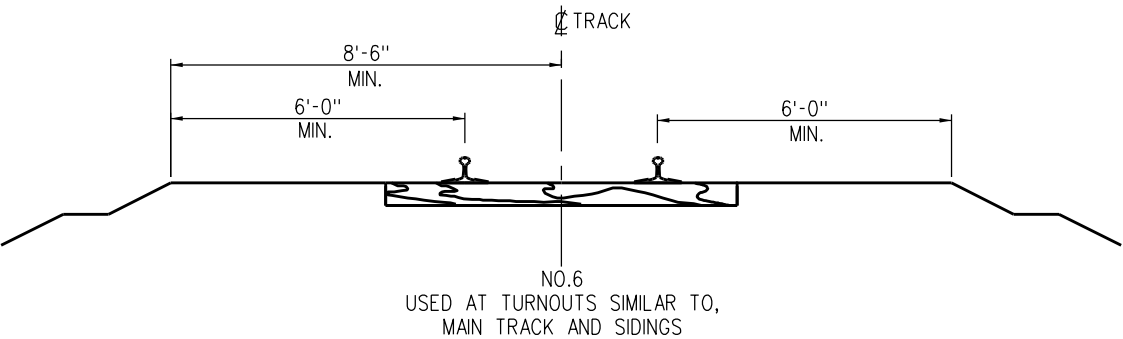
TYPICAL TRACK CONFIGURATION STORAGE TRACKS



GENERAL WALKWAY PER CALIFORNIA P.U.C. STANDARD 1

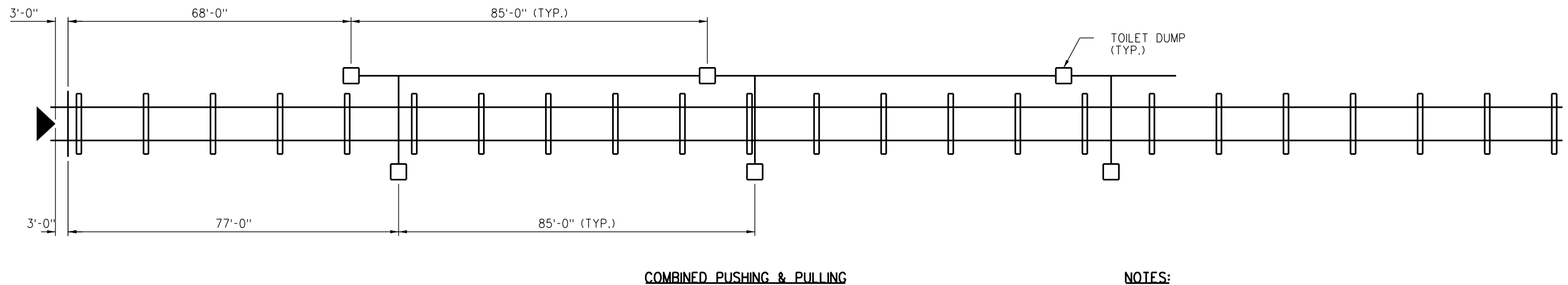
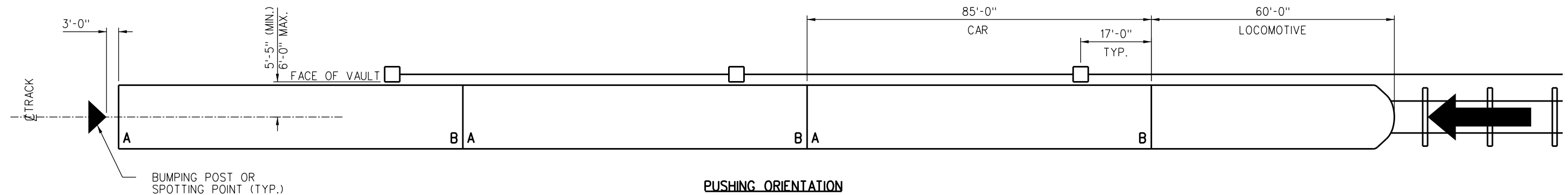
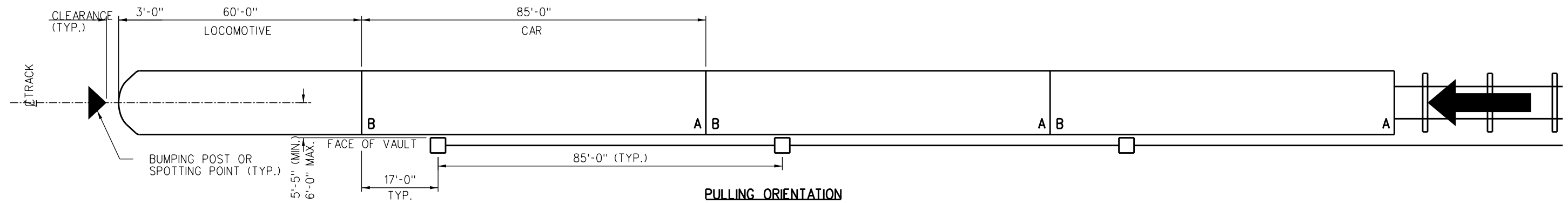


TYPICAL TRACK CONFIGURATION STORAGE TRACKS



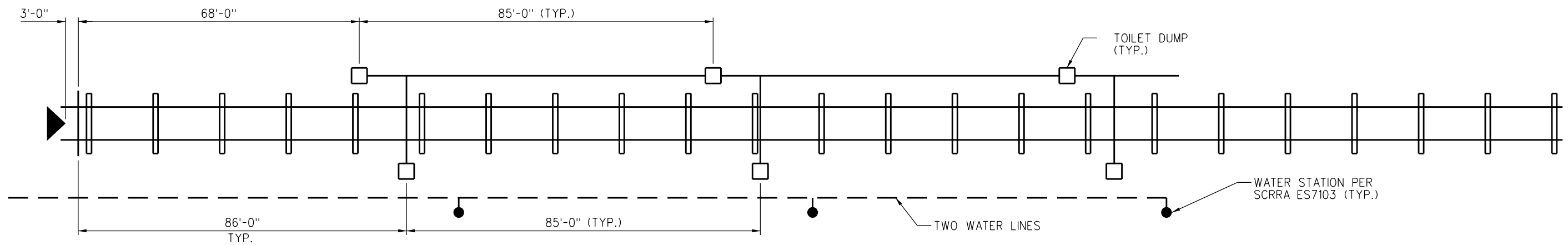
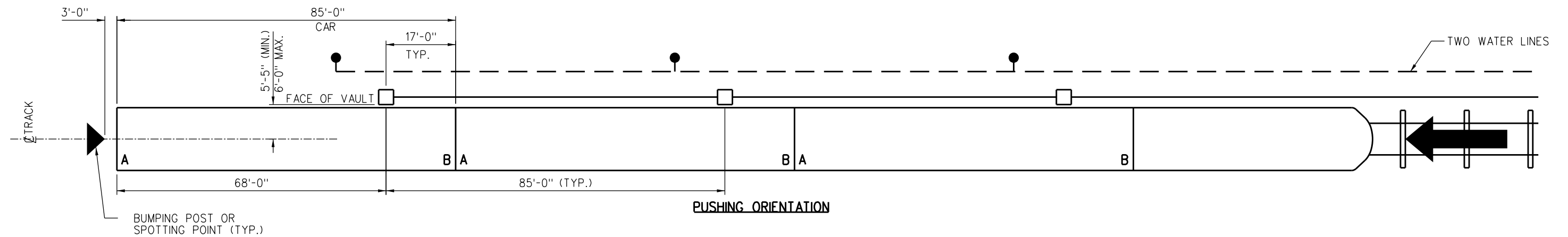
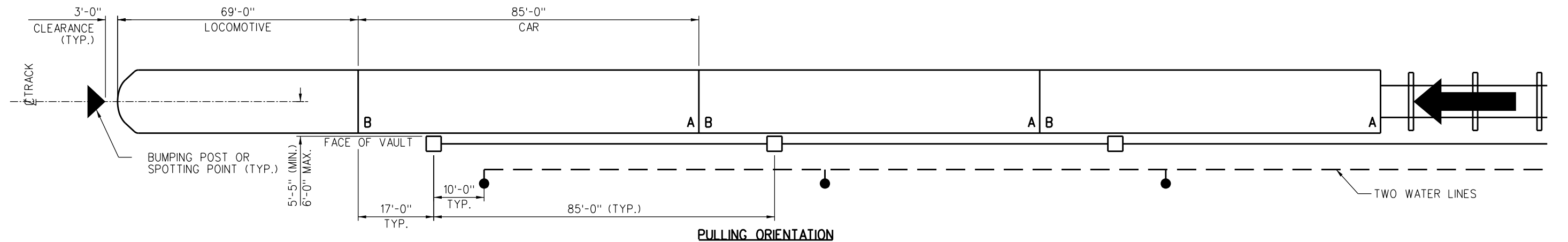
WALKWAY AT TURNOUTS AND CAR SPOTS PER C.P.U.C. STANDARD 6

				DRAWN BY: A. CARLOS		DATE: 03/31/2011		<div>SCRRA ENGINEERING STANDARDS ARE INTENDED FOR SCRRA APPROVED USES ONLY. FOR NON-SCRRA APPROVED USES: SCRRA SHALL NOT BE RESPONSIBLE FOR THE ACCURACY OR COMPLETENESS OF THE DATA OR INFORMATION CONTAINED HEREIN. THE SELECTION AND USE OF THESE STANDARDS IS THE SOLE RESPONSIBILITY OF THE USER AND SHOULD NOT BE USED WITHOUT CONSULTING A REGISTERED PROFESSIONAL ENGINEER. ALL WARRANTIES AND REPRESENTATIONS OF ANY KIND ARE DISCLAIMED. ANYONE MAKING USE OF THIS INFORMATION AGREES THAT IT ASSUMES ALL LIABILITY ARISING FROM SUCH USE. NO PART OF THESE STANDARDS SHOULD BE REPRODUCED OR DISTRIBUTED IN ANY FORM OR BY ANY MEANS WITHOUT THE PRIOR WRITTEN PERMISSION OF SCRRA. ALL RIGHTS RESERVED.</div>	<div>METROLINK SOUTHERN CALIFORNIA REGIONAL RAIL AUTHORITY ONE GATEWAY PLAZA, 12TH FLOOR, L. A., CA. 90012</div>	ENGINEERING STANDARDS		STANDARD 7001	
										SCALE: NONE			
										WALKWAY CLEARANCE FOR FACILITIES WITHOUT UNDER – TRACK PITS			
										REVISION SHEET 2 OF 2			
										CADD FILE: ES7001-02			
X	XX-XX-XX	REVISION		XX	XX								
REV.	DATE	DESCRIPTION		DES.	ENG.								



- NOTES:**
1. THE "B" END OF CARS IS ALWAYS ON THE LOCOMOTIVE SIDE.
 2. THIS ASSUMES SPOTTING TRAINS AT THE SAME LOCATION FOR BOTH PUSHING AND PULLING ORIENTATION.
 3. LAYOUT FOR MULTIPLE TRACKS CAN BE MODIFIED TO MINIMIZE THE NUMBER OF TOILET DUMPS.

				DRAWN BY: A. CARLOS		DATE: 03/31/2011		SCRRRA ENGINEERING STANDARDS ARE INTENDED FOR SCRRRA APPROVED USES ONLY. FOR NON-SCRRRA APPROVED USES, SCRRRA SHALL NOT BE RESPONSIBLE FOR THE ACCURACY OR COMPLETENESS OF THE DATA OR INFORMATION CONTAINED HEREIN. THE SELECTION AND USE OF THESE STANDARDS IS THE SOLE RESPONSIBILITY OF THE USER AND SHOULD NOT BE USED WITHOUT CONSULTING A REGISTERED PROFESSIONAL ENGINEER. ALL WARRANTIES AND REPRESENTATIONS OF ANY KIND ARE DISCLAIMED. ANYONE MAKING USE OF THIS INFORMATION AGREES THAT IT ASSUMES ALL LIABILITY ARISING FROM SUCH USE. NO PART OF THESE STANDARDS SHOULD BE REPRODUCED OR DISTRIBUTED IN ANY FORM OR BY ANY MEANS WITHOUT THE PRIOR WRITTEN PERMISSION OF SCRRRA. ALL RIGHTS RESERVED.		 METROLINK SOUTHERN CALIFORNIA REGIONAL RAIL AUTHORITY ONE GATEWAY PLAZA, 12TH FLOOR, L. A., CA. 90012		ENGINEERING STANDARDS		STANDARD 7101	
				ASSISTANT DIRECTOR: STANDARDS & DESIGN								SCALE: NONE			
				DIRECTOR OF ENGINEERING AND CONSTRUCTION								REVISION SHEET		1 OF 3	
												CADD FILE:		ES7101-01	
X	XX-XX-XX	REVISION		XX	XX										
REV.	DATE	DESCRIPTION		DES.	ENG.										



NOTES:

1. THE "B" END OF CARS IS ALWAYS ON THE LOCOMOTIVE SIDE.
2. THIS ASSUMES SPOTTING TRAINS AT THE SAME LOCATION FOR BOTH PUSHING AND PULLING ORIENTATION.
3. LAYOUT FOR MULTIPLE TRACKS CAN BE MODIFIED TO MINIMIZE THE NUMBER OF TOILET DUMPS.

--	--	--	--	--	--	--	--	--	--	--	--	--	--	--	--	--	--	--	--	--	--	--	--	--	--	--	--	--	--	--	--	--	--	--	--	--	--	--	--	--	--	--	--	--	--	--	--	--	--	--	--	--	--	--	--	--	--	--	--	--	--	--	--	--	--	--	--	--	--	--	--	--	--	--	--	--	--	--	--	--	--	--	--	--	--	--	--	--	--	--	--	--	--	--	--	--	--	--	--	--	--	--	--	--	--	--	--	--	--	--	--	--	--	--	--	--	--	--	--	--	--	--	--	--	--	--	--	--	--	--	--	--	--	--	--	--	--	--	--	--	--	--	--	--	--	--	--	--	--	--	--	--	--	--	--	--	--	--	--	--	--	--	--	--	--	--	--	--	--	--	--	--	--	--	--	--	--	--	--	--	--	--	--	--	--	--	--	--	--	--	--	--	--	--	--	--	--	--	--	--	--	--	--	--	--	--	--	--	--	--	--	--	--	--	--	--	--	--	--	--	--	--	--	--	--	--	--	--	--	--	--	--	--	--	--	--	--	--	--	--	--	--	--	--	--	--	--	--	--	--	--	--	--	--	--	--	--	--	--	--	--	--	--	--	--	--	--	--	--	--	--	--	--	--	--	--	--	--	--	--	--	--	--	--	--	--	--	--	--	--	--	--	--	--	--	--	--	--	--	--	--	--	--	--	--	--	--	--	--	--	--	--	--	--	--	--	--	--	--	--	--	--	--	--	--	--	--	--	--	--	--	--	--	--	--	--	--	--	--	--	--	--	--	--	--	--	--	--	--	--	--	--	--	--	--	--	--	--	--	--	--	--	--	--	--	--	--	--	--	--	--	--	--	--	--	--	--	--	--	--	--	--	--	--	--	--	--	--	--	--	--	--	--	--	--	--	--	--	--	--	--	--	--	--	--	--	--	--	--	--	--	--	--	--	--	--	--	--	--	--	--	--	--	--	--	--	--	--	--	--	--	--	--	--	--	--	--	--	--	--	--	--	--	--	--	--	--	--	--	--	--	--	--	--	--	--	--	--	--	--	--	--	--	--	--	--	--	--	--	--	--	--	--	--	--	--	--	--	--	--	--	--	--	--	--	--	--	--	--	--	--	--	--	--	--	--	--	--	--	--	--	--	--	--	--	--	--	--	--	--	--	--	--	--	--	--	--	--	--	--	--	--	--	--	--	--	--	--	--	--	--	--	--	--	--	--	--	--	--	--	--	--	--	--	--	--	--	--	--	--	--	--	--	--	--	--	--	--	--	--	--	--	--	--	--	--	--	--	--	--	--	--	--	--	--	--	--	--	--	--	--	--	--	--	--	--	--	--	--	--	--	--	--	--	--	--	--	--	--	--	--	--	--	--	--	--	--	--	--	--	--	--	--	--	--	--	--	--	--	--	--	--	--	--	--	--	--	--	--	--	--	--	--	--	--	--	--	--	--	--	--	--	--	--	--	--	--	--	--	--	--	--	--	--	--	--	--	--	--	--	--	--	--	--	--	--	--	--	--	--	--	--	--	--	--	--	--	--	--	--	--	--	--	--	--	--	--	--	--	--	--	--	--	--	--	--	--	--	--	--	--	--	--	--	--	--	--	--	--	--	--	--	--	--	--	--	--	--	--	--	--	--	--	--	--	--	--	--	--	--	--	--	--	--	--	--	--	--	--	--	--	--	--	--	--	--	--	--	--	--	--	--	--	--	--	--	--	--	--	--	--	--	--	--	--	--	--	--	--	--	--	--	--	--	--	--	--	--	--	--	--	--	--	--	--	--	--	--	--	--	--	--	--	--	--	--	--	--	--	--	--	--	--	--	--	--	--	--	--	--	--	--	--	--	--	--	--	--	--	--	--	--	--	--	--	--	--	--	--	--	--	--	--	--	--	--	--	--	--	--	--	--	--	--	--	--	--	--	--	--	--	--	--	--	--	--	--	--	--	--	--	--	--	--	--	--	--	--	--	--	--	--	--	--	--	--	--	--	--	--	--	--	--	--	--	--	--	--	--	--	--	--	--	--	--	--	--	--	--	--	--	--	--	--	--	--	--	--	--	--	--	--	--	--	--	--	--	--	--	--	--	--	--	--	--	--	--	--	--	--	--	--	--	--	--	--	--	--	--	--	--	--	--	--	--	--	--	--	--	--	--	--	--	--	--	--	--	--	--	--	--	--	--	--	--	--	--	--	--	--	--	--	--	--	--	--	--	--	--	--	--	--	--	--	--	--	--	--	--	--	--	--	--	--	--	--	--	--	--	--	--	--	--	--	--	--	--	--	--	--	--	--	--	--	--	--	--	--	--	--	--	--	--	--	--	--	--	--	--	--	--	--	--	--	--	--	--	--	--	--	--	--	--	--	--	--	--	--	--	--	--	--	--	--	--	--	--	--	--	--	--	--	--	--	--	--	--	--	--	--	--	--	--	--	--	--	--	--	--	--	--	--	--	--	--	--	--	--	--	--	--	--	--	--	--	--	--	--	--	--	--	--	--	--	--	--	--	--	--	--	--	--	--	--	--	--	--	--	--	--	--	--	--	--	--	--	--	--	--	--	--	--	--	--	--	--	--	--	--	--	--	--	--	--	--	--	--	--	--	--	--	--	--	--	--	--	--	--	--	--	--	--	--	--	--	--	--	--	--	--	--	--	--	--	--	--	--	--	--	--	--	--	--	--	--	--	--	--	--	--	--	--	--	--	--	--	--	--	--	--	--	--	--	--	--	--	--	--	--	--	--	--	--	--	--	--	--	--	--	--	--	--	--	--	--	--	--	--	--	--	--	--	--	--	--	--	--	--	--	--	--	--	--	--	--	--	--	--	--	--	--	--	--	--	--	--	--	--	--	--	--	--	--	--	--	--	--	--	--	--	--	--	--	--	--	--	--	--	--	--	--	--	--	--	--	--	--	--	--	--	--	--	--	--	--	--	--	--	--	--	--	--	--	--	--	--	--	--	--	--	--	--	--	--	--	--	--	--	--	--	--	--	--	--	--	--	--	--	--	--	--	--	--	--	--	--	--	--	--	--	--	--	--	--	--	--	--	--	--	--	--	--	--	--	--	--	--	--	--	--	--	--	--	--	--	--	--	--	--	--	--	--	--	--	--	--	--	--	--	--	--	--	--	--	--	--	--	--	--	--	--	--	--	--	--	--	--	--	--	--	--	--

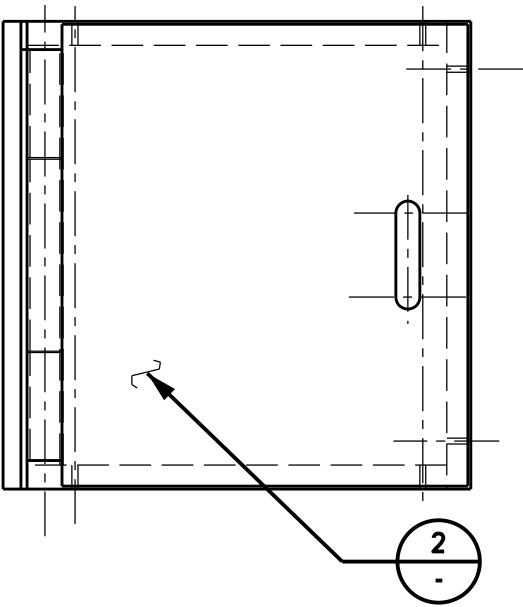
\$USER\$

Date Plotted: \$DATE\$

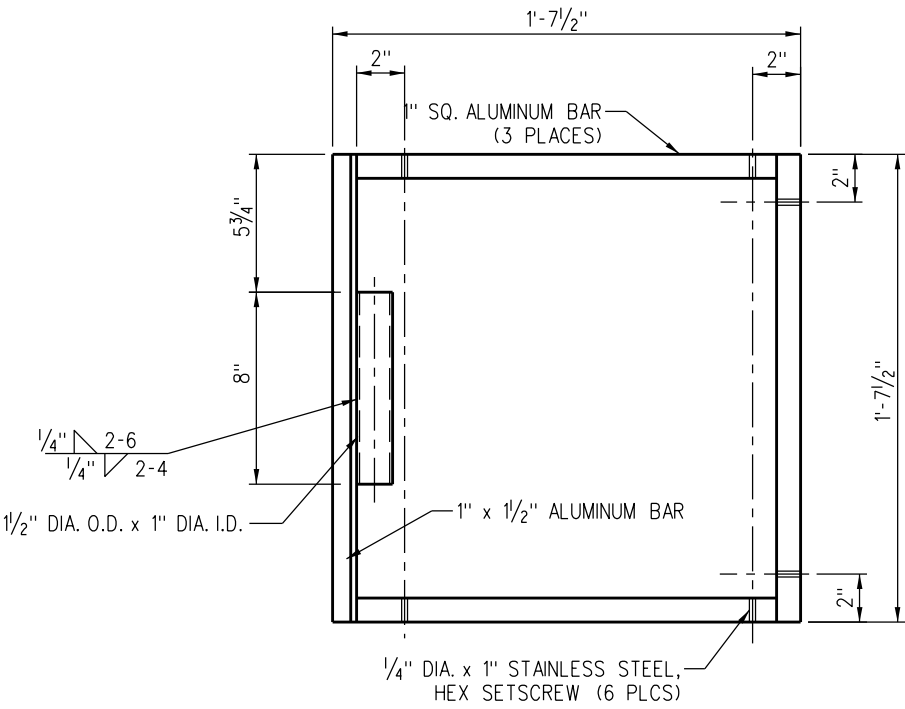
\$TIME\$

Plot Driver=> \$PLTDRL\$

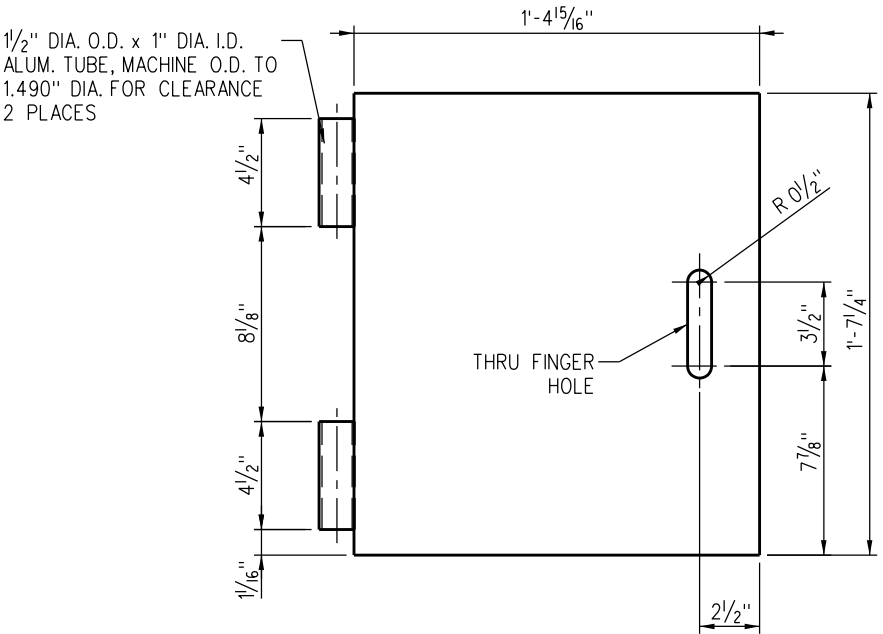
FileName=> \$FILEL\$



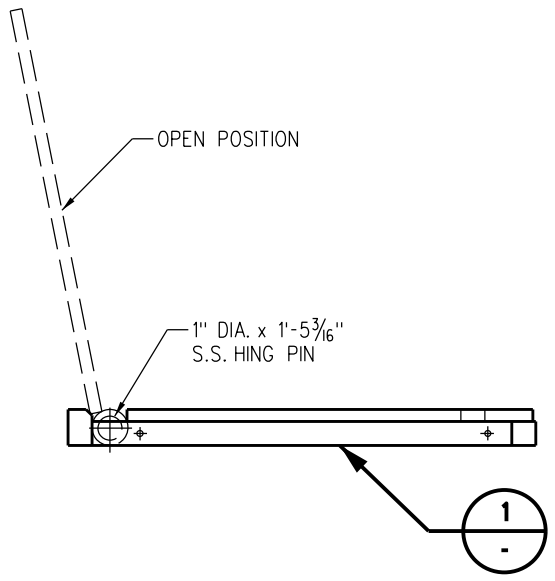
PLAN VIEW
ASSEMBLY



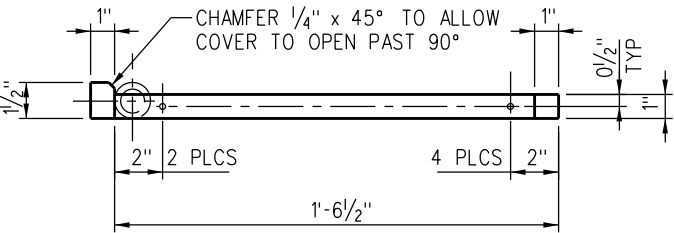
PLAN VIEW
FRAME



PLAN VIEW
LID / COVER

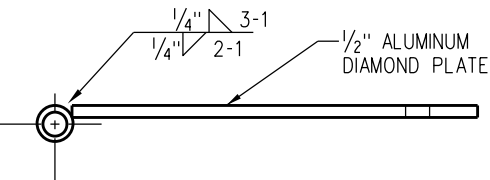


ELEVATION
SEWER DUMP LID
ASSEMBLY DETAIL



SIDE VIEW
ALUMINUM FRAME

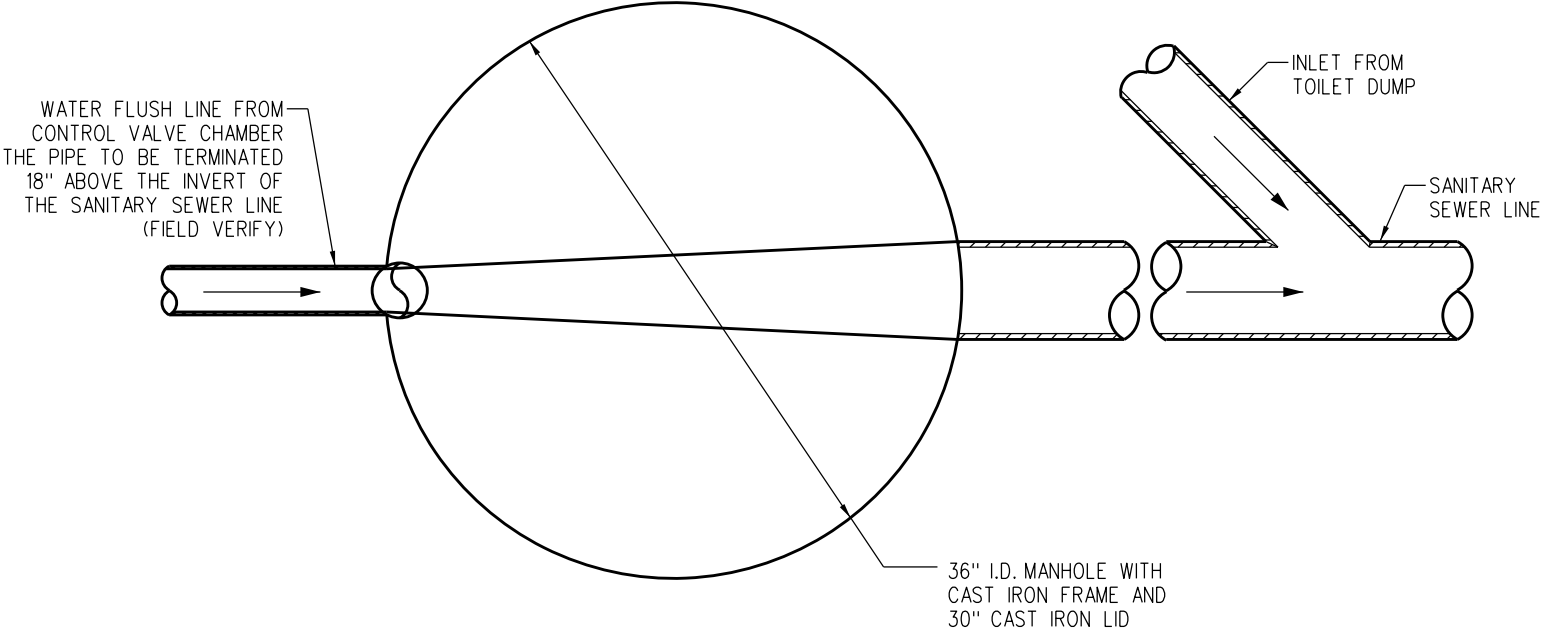
DETAIL 1



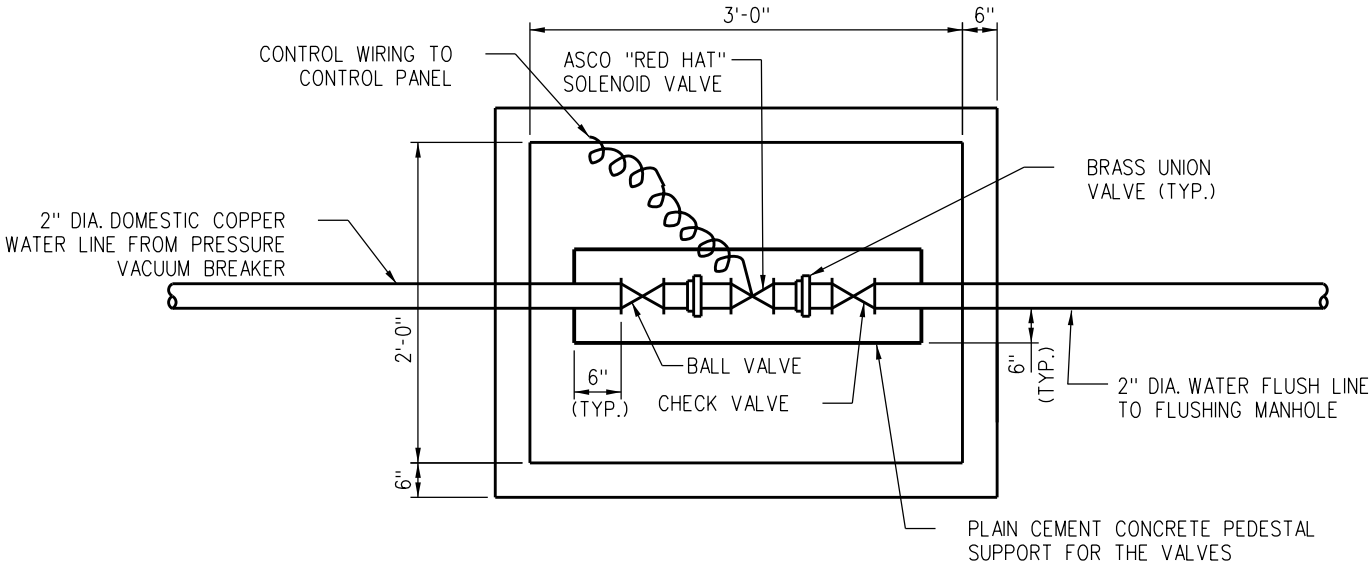
SIDE VIEW
ALUMINUM COVER

DETAIL 2

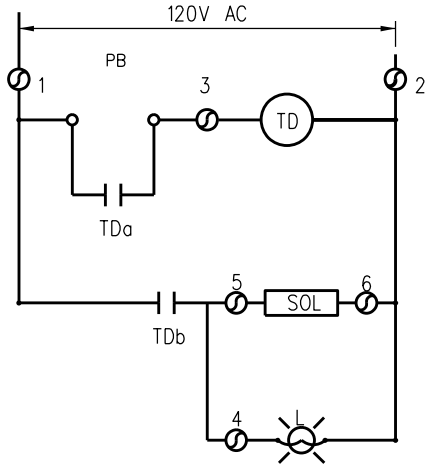
NOTE:
ALL ALUMINUM TO BE 6061-T6



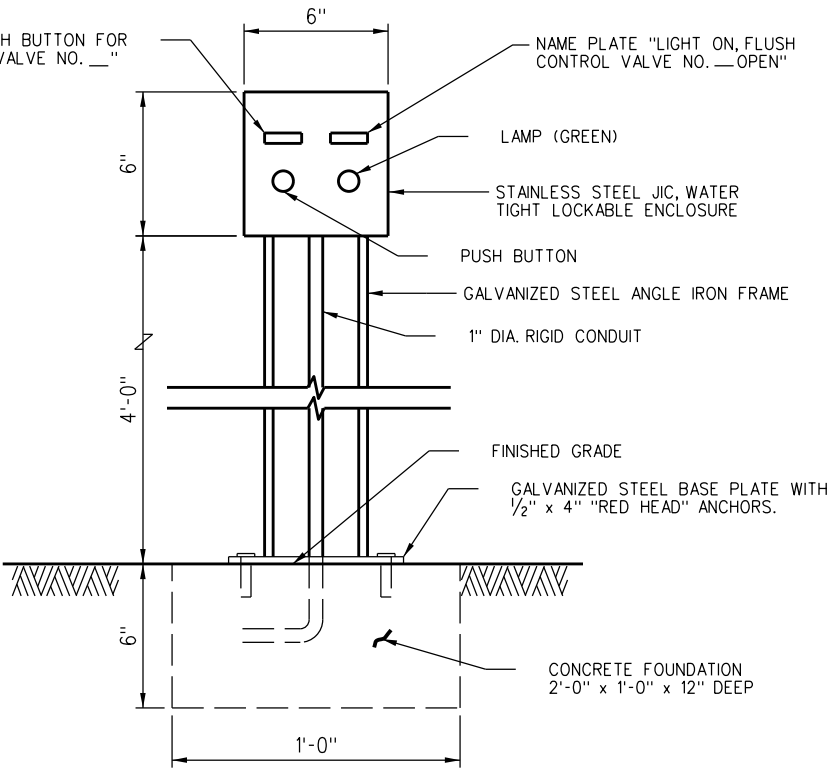
PLAN
FLUSHING MANHOLE



PLAN
FLUSHING CONTROL VALVE
BOX CHAMBER

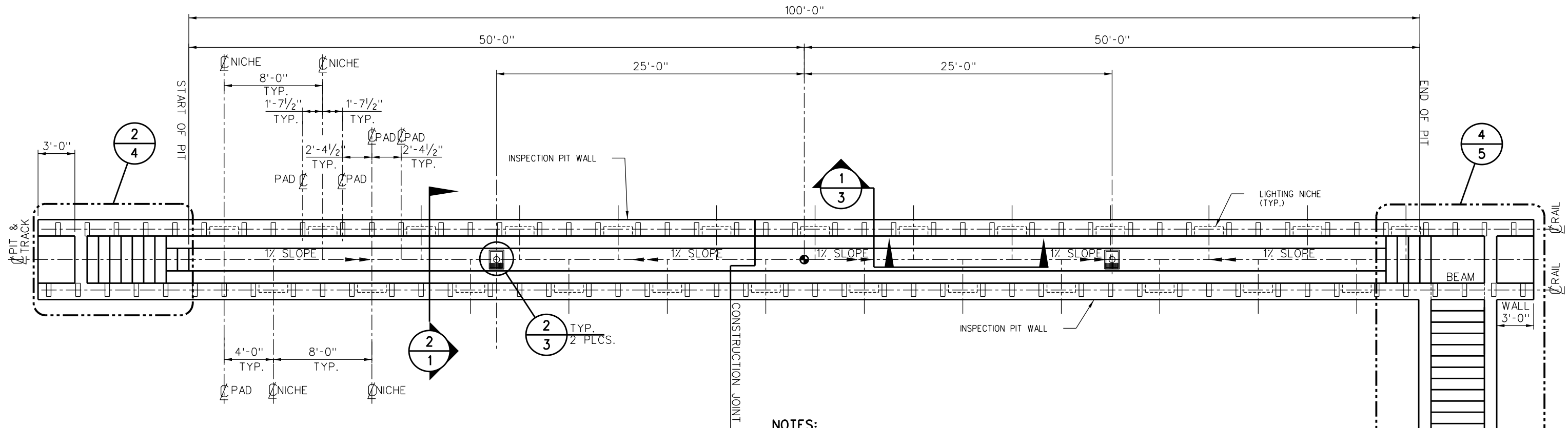


SCHEMATIC DIAGRAM FOR
SOLENOID VALVE CONTROL



FLUSHING MANHOLE
CONTROL PANEL LAYOUT

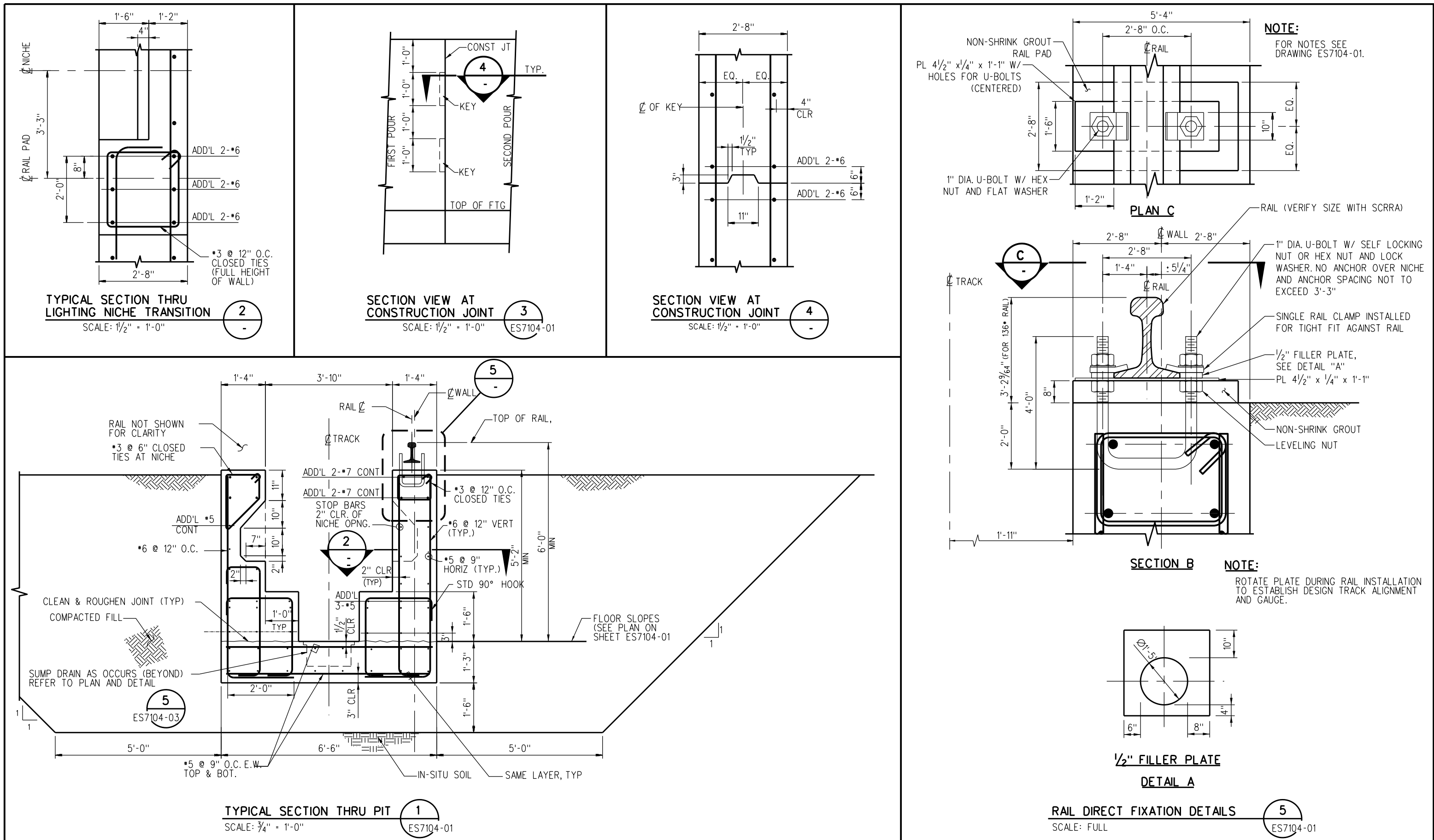
				DRAWN BY: A. CARLOS		DATE: 03/31/2011		SCRR ENGINEERING STANDARDS ARE INTENDED FOR SCRR APPROVED USES ONLY. FOR NON-SCRR APPROVED USES, SCRR SHALL NOT BE RESPONSIBLE FOR THE ACCURACY OR COMPLETENESS OF THE DATA OR INFORMATION CONTAINED HEREIN. THE SELECTION AND USE OF THESE STANDARDS IS THE SOLE RESPONSIBILITY OF THE USER AND SHOULD NOT BE USED WITHOUT CONSULTING A REGISTERED PROFESSIONAL ENGINEER. ALL WARRANTIES AND REPRESENTATIONS OF ANY KIND ARE DISCLAIMED. ANYONE MAKING USE OF THIS INFORMATION AGREES THAT IT ASSUMES ALL LIABILITY ARISING FROM SUCH USE. NO PART OF THESE STANDARDS SHOULD BE REPRODUCED OR DISTRIBUTED IN ANY FORM OR BY ANY MEANS WITHOUT THE PRIOR WRITTEN PERMISSION OF SCRR. ALL RIGHTS RESERVED.		 METROLINK [®]		ENGINEERING STANDARDS		STANDARD 7102	
				ASSISTANT DIRECTOR: STANDARDS & DESIGN								FLUSHING MANHOLE DETAILS		SCALE: NONE	
				DIRECTOR OF ENGINEERING AND CONSTRUCTION										REVISION SHEET 1 OF 1	
														CADD FILE: ES7102	
X	XX-XX-XX	REVISION		XX	XX										
REV.	DATE	DESCRIPTION		DES.	ENG.										



NOTES:

1. LOCATION OF RAIL PADS AND LIGHTING NICHES WILL BE DETERMINED BY RAIL TIE CONFIGURATION LEADING INTO INSPECTION PIT.
2. DIMENSIONS SHOWN ARE FOR A STANDARD INSPECTION PIT, ACTUAL DIMENSIONS TO BE DETERMINED BY ENGINEER.
3. INSPECTION PIT DESIGN BASED ON SOIL BEARING PRESSURE OF 2250 PSF TO 3500 PSF, SITE SPECIFIC CONDITIONS SHOULD BE VERIFIED AND DESIGN ADJUSTED ACCORDINGLY.
4. CONCRETE SHALL BE NORMAL WEIGHT - 145 LBS./CU. FT. AND SHALL HAVE A MINIMUM COMPRESSIVE STRENGTH AT 28 DAYS OF 3000 PSIFOR ALL CONCRETE, UNLESS NOTED OTHERWISE.
5. MIXING AND PLACING OF ALL CONCRETE AND SELECTION OF MATERIALS SHALL BE IN ACCORDANCE WITH THE APPLICABLE CODE AND ACISTANDARDS. CEMENT SHALL BE TYPE II CONFORMING TO ASTM C150. WATER FOR MIXING AND CURING SHALL BE FRESH, CLEAN AND POTABLE. CONTINUOUS INSPECTION IS REQUIRED FOR ALL CONCRETE WORK. WATER CEMENT RATION NOT TO EXCEED 0.50.
6. PROPORTIONS OF AGGREGATE TO CEMENT SHALL BE SUCH AS TO PRODUCE A DENSE WORK-ABLE MIX WHICH CAN BE PLACED WITHOUT SEGREGATION OR EXCESS FREE SURFACE WATER. REFER TO SCRRRA STANDARDS AND SPECIFICATIONS FOR AGGREGATES AND PROPORTIONS. MIX DESIGNS SHALL BE SUBMITTED TO THE ENGINEER FOR APPROVAL PRIOR TO USE.
7. REINFORCING STEEL SHALL BE DEFORMED STEEL CONFORMING TO THE REQUIREMENTS OF ASTM A615, GRADE 60. REINFORCING STEEL TO BE WELDED SHALL CONFORM TO REQUIREMENTS OF ASTM A706, GRADE 60, UNLESS NOTED OTHERWISE.
8. REINFORCING BARS SHALL BE SPLICED AS SHOWN ON DRAWINGS. ANY ADDITIONAL SPLICING SHALL REQUIRE PRIOR APPROVAL FROM THE ENGINEER OF RECORD.
9. REINFORCING STEEL SHALL HAVE A MINIMUM PROTECTIVE COVERING CONCRETE AS FOLLOWS:
 - A) CONCRETE PLACED DIRECTLY AGAINST EARTH _____ 3"
 - B) CONCRETE PLACED AGAINST FORMS BUT EXPOSED TO EARTH OR WEATHER:
BARS LARGER THAN NO. 5 _____ 2"
NO. 5 AND SMALLER _____ 1 1/2"
 - C) CONCRETE PLACED AGAINST FORMS BUT NOT EXPOSED DIRECTLY TO EARTH OR WEATHER:
SLABS AND WALLS _____ 1"
ALL OTHERS _____ As per ACI 318-89
10. ALL BARS SHALL BE CLEAN OF RUST, GREASE AND OTHER MATERIALS LIKELY TO IMPAIR BOND. ALL BENDS SHALL BE MADE COLD.

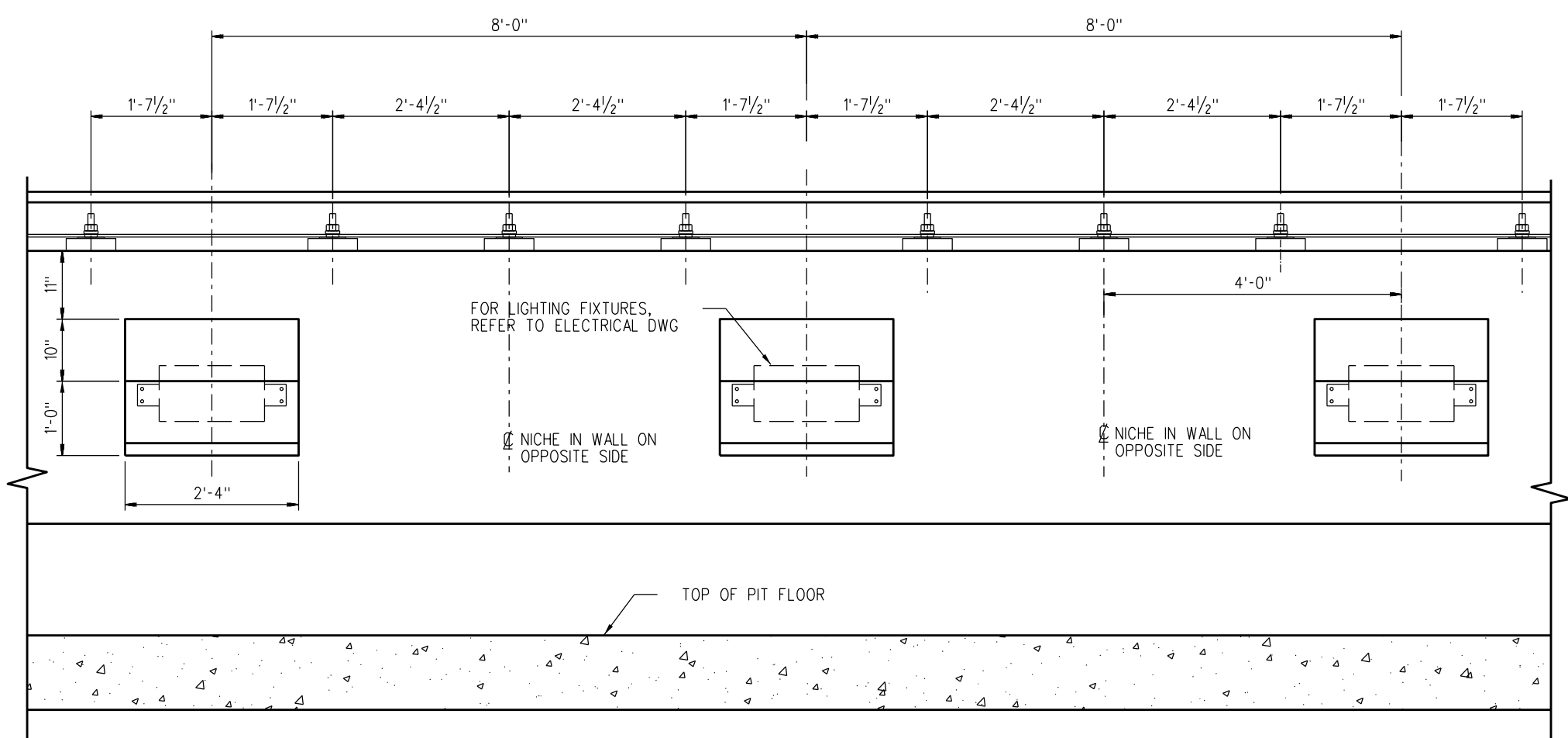
				DRAWN BY: A. CARLOS		DATE: 03/31/2011		SCRRRA ENGINEERING STANDARDS ARE INTENDED FOR SCRRRA APPROVED USES ONLY. FOR NON-SCRRRA APPROVED USES, SCRRRA SHALL NOT BE RESPONSIBLE FOR THE ACCURACY OR COMPLETENESS OF THE DATA OR INFORMATION CONTAINED HEREIN. THE SELECTION AND USE OF THESE STANDARDS IS THE SOLE RESPONSIBILITY OF THE USER AND SHOULD NOT BE USED WITHOUT CONSULTING A REGISTERED PROFESSIONAL ENGINEER. ALL WARRANTIES AND REPRESENTATIONS OF ANY KIND ARE DISCLAIMED. ANYONE MAKING USE OF THIS INFORMATION AGREES THAT IT ASSUMES ALL LIABILITY ARISING FROM SUCH USE. NO PART OF THESE STANDARDS SHOULD BE REPRODUCED OR DISTRIBUTED IN ANY FORM OR BY ANY MEANS WITHOUT THE PRIOR WRITTEN PERMISSION OF SCRRRA. ALL RIGHTS RESERVED.				ENGINEERING STANDARDS		STANDARD 7104	
				ASSISTANT DIRECTOR: STANDARDS & DESIGN				METROLINK®				TYPICAL INSPECTION PIT PLAN		SCALE: 1/4" = 1'-0"	
				DIRECTOR OF ENGINEERING AND CONSTRUCTION				SOUTHERN CALIFORNIA REGIONAL RAIL AUTHORITY						REVISION SHEET	
								ONE GATEWAY PLAZA, 12TH FLOOR, L. A., CA. 90012						1 OF 5	
														CADD FILE: ES7104-01	



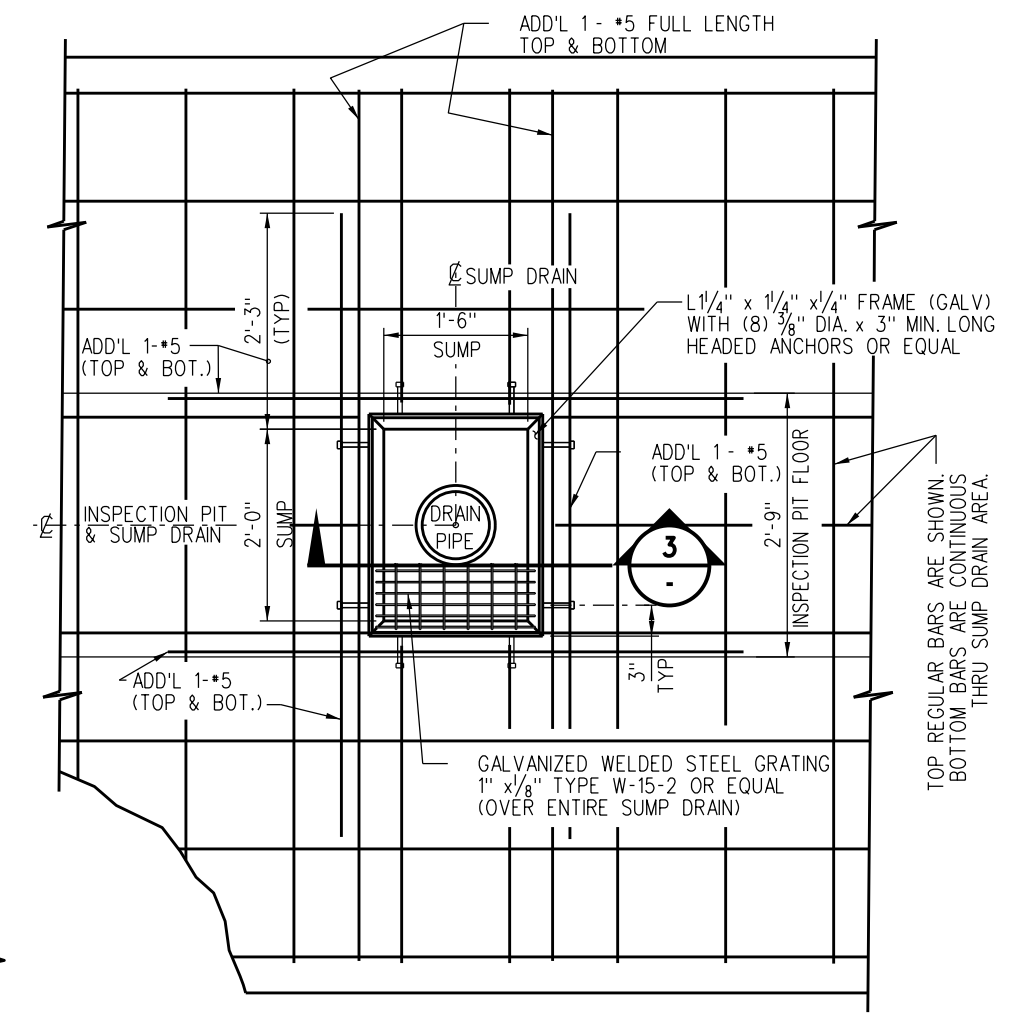
DRAWN BY: A. CARLOS DATE: 03/31/2011				SCRR ENGINEERING STANDARDS ARE INTENDED FOR SCRR APPROVED USES ONLY. SCRR SHALL NOT BE RESPONSIBLE FOR THE ACCURACY OR COMPLETENESS OF THE DATA OR INFORMATION CONTAINED HEREIN. THE SELECTION AND USE OF THESE STANDARDS IS THE SOLE RESPONSIBILITY OF THE USER AND SHOULD NOT BE USED WITHOUT CONSULTING A REGISTERED PROFESSIONAL ENGINEER. ALL WARRANTIES AND REPRESENTATIONS OF ANY KIND ARE DISCLAIMED. ANYONE MAKING USE OF THIS INFORMATION AGREES THAT IT ASSUMES ALL LIABILITY ARISING FROM SUCH USE. NO PART OF THESE STANDARDS SHOULD BE REPRODUCED OR DISTRIBUTED IN ANY FORM OR BY ANY MEANS WITHOUT THE PRIOR WRITTEN PERMISSION OF SCRR. ALL RIGHTS RESERVED.				 METROLINK SOUTHERN CALIFORNIA REGIONAL RAIL AUTHORITY ONE GATEWAY PLAZA, 12TH FLOOR, L. A., CA. 90012				ENGINEERING STANDARDS				STANDARD 7104			
REVISION				AS NOTED				INSPECTION PIT SECTION AND DETAILS				SHEET 2 OF 5				ES7104-02			
REV. DATE DESCRIPTION DES. ENG.				CADD FILE:															

User Name: carlosa Date Plotted: 10/5/2011 2:30:29 PM Plot Driver: S:\Plot Drivers\pdf.plt File Name: s:\V8EngStds\7000\ES7104-02.dgn

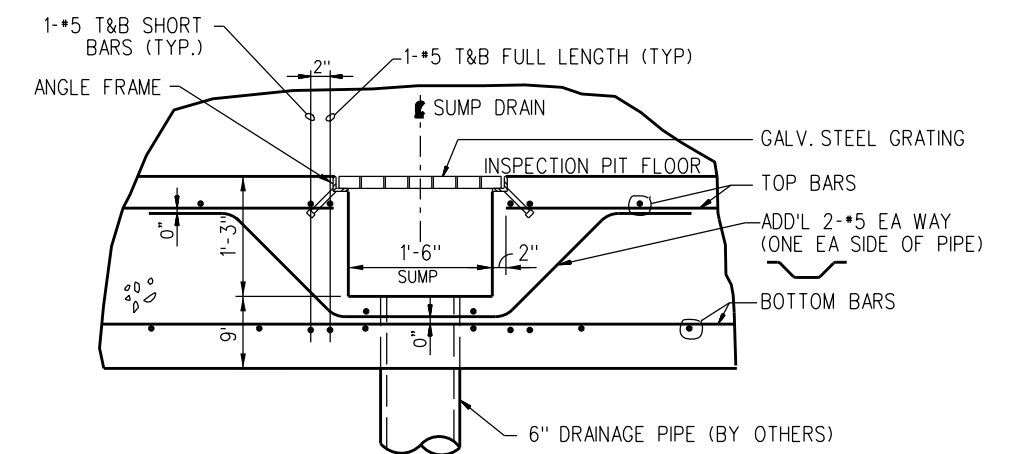
NOTE:
FOR NOTES SEE DRAWING ES7104-01.



INSPECTION PIT PARTIAL ELEVATION 1
SCALE: 1" = 1'-0" ES7104-01

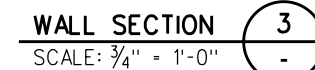
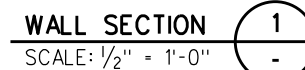
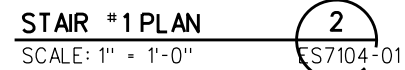


PLAN - SUMP DRAIN 2
SCALE: 1 1/2" = 1'-0"

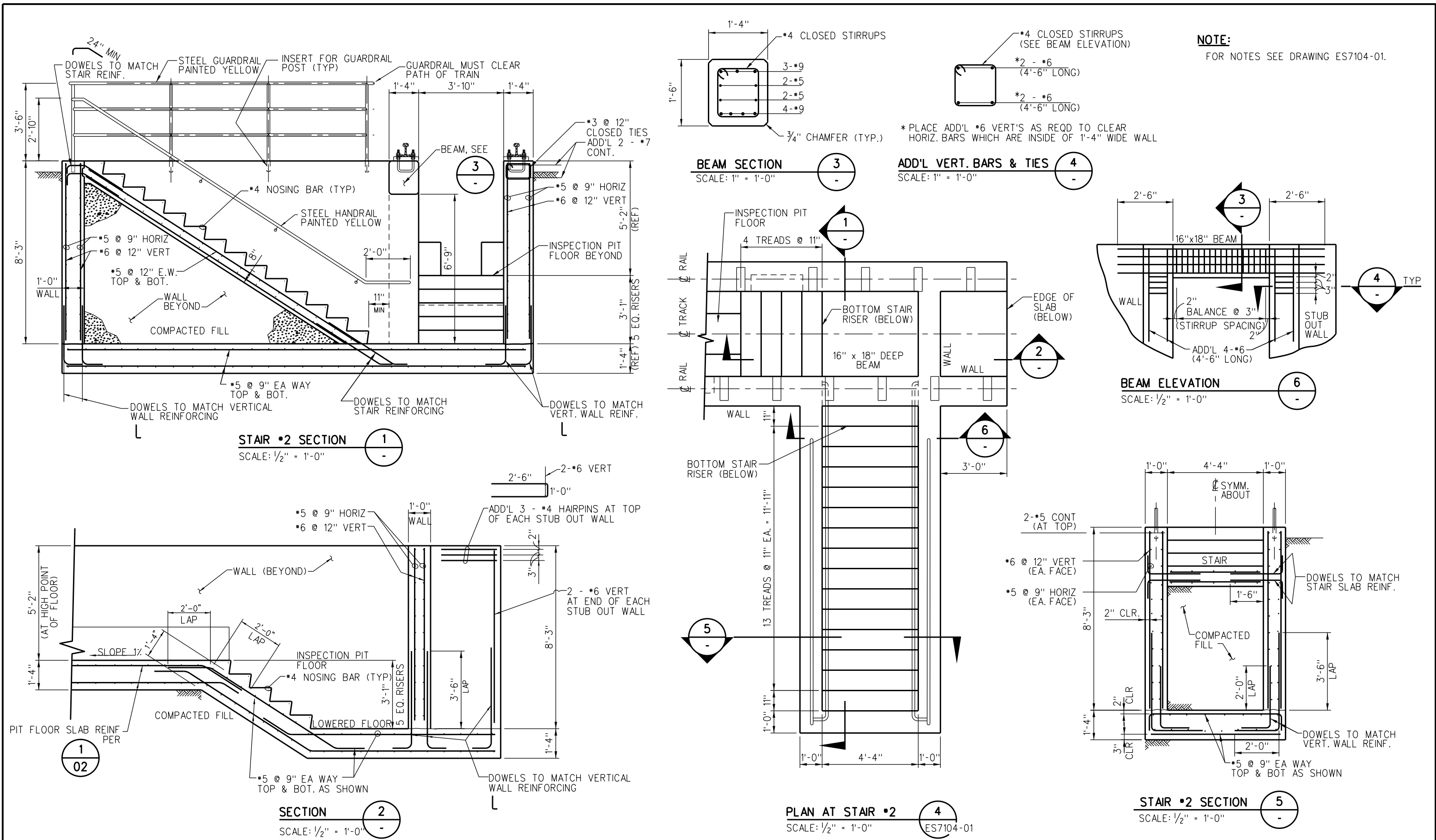


SECTION THRU SUMP DRAIN 3
SCALE: 1 1/2" = 1'-0"

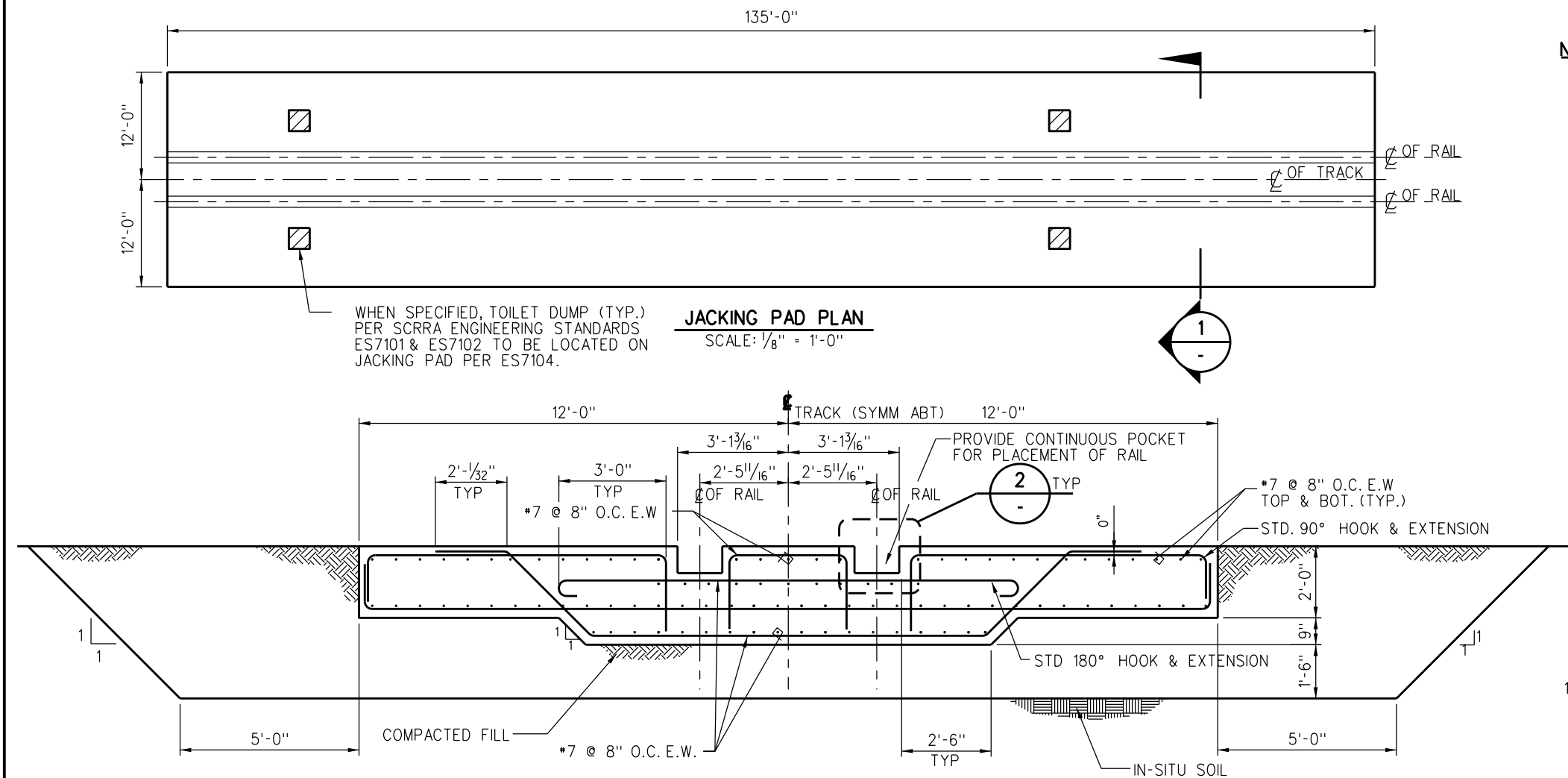
FOR NOTES SEE DRAWING ES7104-01.



				DRAWN BY: A. CARLOS DATE: 03/31/2011		SCRR ENGINEERING STANDARDS ARE INTENDED FOR SCRR APPROVED USES ONLY. FOR NON-SCRR APPROVED USES: SCRR SHALL NOT BE RESPONSIBLE FOR THE ACCURACY OR COMPLETENESS OF THE DATA OR INFORMATION CONTAINED HEREIN. THE SELECTION AND USE OF THESE STANDARDS IS THE SOLE RESPONSIBILITY OF THE USER AND SHOULD NOT BE USED WITHOUT CONSULTING A REGISTERED PROFESSIONAL ENGINEER. ALL WARRANTIES AND REPRESENTATIONS OF ANY KIND ARE DISCLAIMED. ANYONE MAKING USE OF THIS INFORMATION AGREES THAT IT HEREBY ASSUMES ALL LIABILITY ARISING FROM SUCH USE. NO PART OF THESE STANDARDS SHOULD BE REPRODUCED OR DISTRIBUTED IN ANY FORM OR BY ANY MEANS WITHOUT THE PRIOR WRITTEN PERMISSION OF SCRR. ALL RIGHTS RESERVED.		 METROLINK®		ENGINEERING STANDARDS		STANDARD 7104	
				 ASSISTANT DIRECTOR: STANDARDS & DESIGN						SCALE: AS NOTED		SHEET	
				 DIRECTOR OF ENGINEERING AND CONSTRUCTION						INSPECTION PIT		4 OF 5	
										STAIR PLAN AND SECTION		CADD FILE: ES7104-04	
X	XX-XX-XX	REVISION		XX	XX								
REV.	DATE	DESCRIPTION		DES.	ENG.								

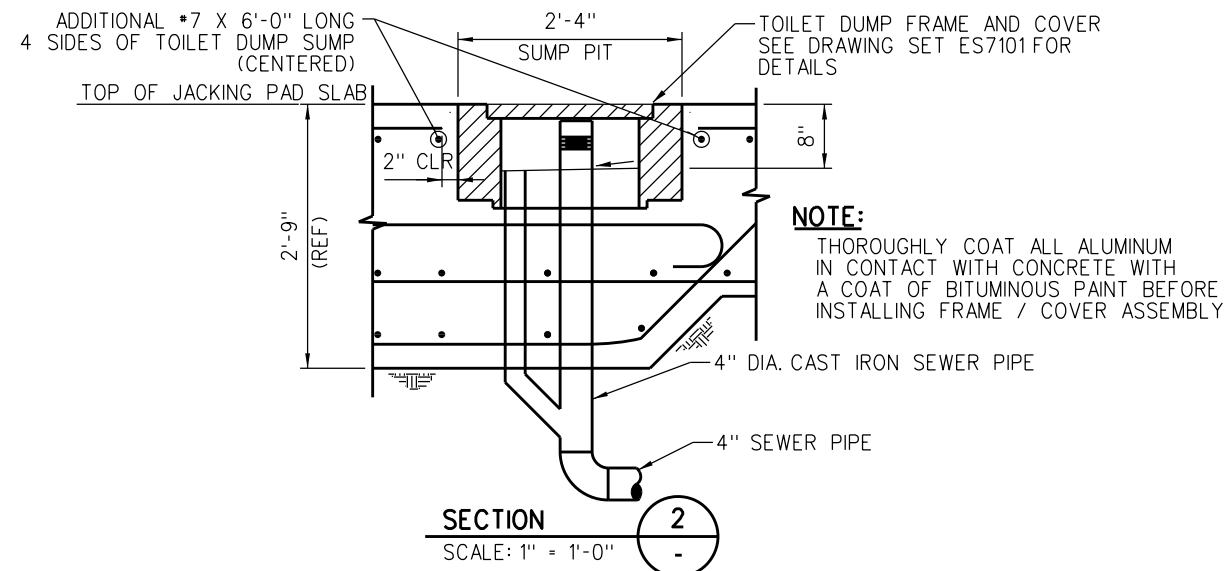


DRAWN BY: A. CARLOS DATE: 03/31/2011				SCRR ENGINEERING STANDARDS ARE INTENDED FOR SCRR APPROVED USES ONLY. FOR NON-SCRR APPROVED USES, SCRR SHALL NOT BE RESPONSIBLE FOR THE ACCURACY OR COMPLETENESS OF THE DATA OR INFORMATION CONTAINED HEREIN. THE SELECTION AND USE OF THESE STANDARDS IS THE SOLE RESPONSIBILITY OF THE USER AND SHOULD NOT BE USED WITHOUT CONSULTING A REGISTERED PROFESSIONAL ENGINEER. ALL WARRANTIES AND REPRESENTATIONS OF ANY KIND ARE DISCLAIMED. ANYONE MAKING USE OF THIS INFORMATION AGREES THAT IT ASSUMES ALL LIABILITY ARISING FROM SUCH USE. NO PART OF THESE STANDARDS SHOULD BE REPRODUCED OR DISTRIBUTED IN ANY FORM OR BY ANY MEANS WITHOUT THE PRIOR WRITTEN PERMISSION OF SCRR. ALL RIGHTS RESERVED.				ENGINEERING STANDARDS				STANDARD
REVISION				METROLINK®				INSPECTION PIT				7104
REV. DATE DESCRIPTION DES. ENG.				SOUTHERN CALIFORNIA REGIONAL RAIL AUTHORITY				STAIR PLAN, SECTIONS AND DETAILS				SCALE: AS NOTED
REV. DATE DESCRIPTION DES. ENG.				ONE GATEWAY PLAZA, 12TH FLOOR, L. A., CA. 90012				5 OF 5				REVISION SHEET
REV. DATE DESCRIPTION DES. ENG.				CADD FILE: ES7104-05								CADD FILE:



JACKING PAD PLAN
SCALE: 1/8" = 1'-0"

SECTION 1
SCALE: 1/2" = 1'-0"

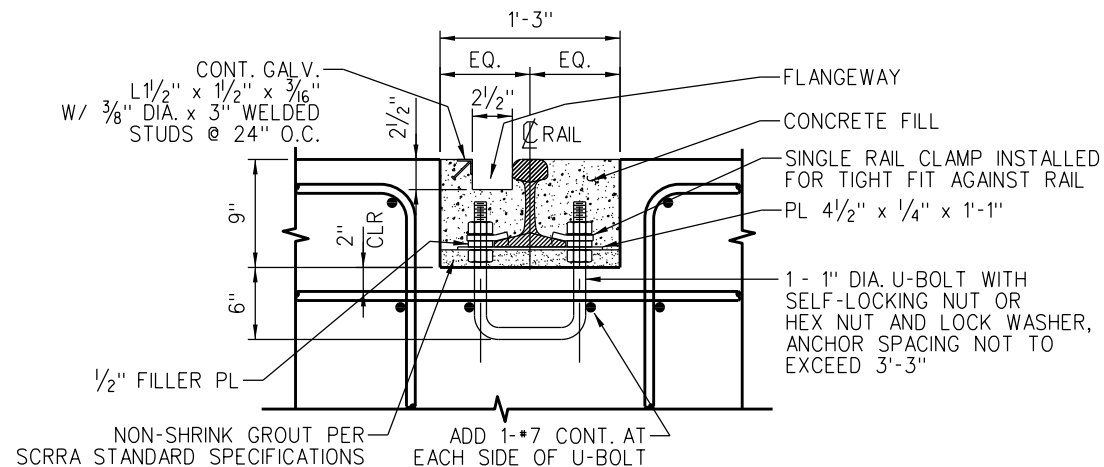


NOTE:
THOROUGHLY COAT ALL ALUMINUM IN CONTACT WITH CONCRETE WITH A COAT OF BITUMINOUS PAINT BEFORE INSTALLING FRAME / COVER ASSEMBLY

SECTION 2
SCALE: 1" = 1'-0"

NOTES:

- TOILET DUMPS SHOWN FOR REFERENCE ONLY. EXACT LOCATIONS TO BE DETERMINED BY SCRRRA ENGINEERING STANDARD ES7104.
- DIMENSIONS SHOWN ARE FOR A STANDARD JACKING PAD, ACTUAL DIMENSIONS TO BE DETERMINED BY ENGINEERING CONTRACTOR.
- JACKING PAD DESIGN BASED ON SOIL BEARING PRESSURE OF 2250 PSF TO 3500 PSF, SITE SPECIFIC CONDITIONS SHOULD BE VERIFIED AND DESIGN ADJUSTED ACCORDINGLY.
- CONCRETE SHALL BE NORMAL WEIGHT-145 LBS./CU. FT. AND SHALL HAVE A MINIMUM COMPRESSIVE STRENGTH AT 28 DAYS OF 3000 PSIFOR ALL CONCRETE.
- MIXING AND PLACING OF ALL CONCRETE AND SELECTION OF MATERIALS SHALL BE IN ACCORDANCE WITH THE APPLICABLE CODE AND ACISTANDARDS. CEMENT SHALL BE TYPE IICONFORMING TO ASTM C150. WATER FOR MIXING AND CURING SHALL BE FRESH, CLEAN AND POTABLE. CONTINUOUS INSPECTION IS REQUIRED FOR ALL CONCRETE WORK. WATER CEMENT RATION NOT MORE THAN 0.50.
- PROPORTIONS OF AGGREGATE TO CEMENT SHALL BE SUCH AS TO PRODUCE A DENSE WORKABLE MIX WHICH CAN BE PLACED WITHOUT SEGREGATION OR EXCESS FREE SURFACE WATER. REFER TO SCRRRA STANDARDS AND SPECIFICATIONS FOR AGGREGATES AND PROPORTIONS. MIX DESIGNS SHALL BE SUBMITTED TO THE ENGINEER FOR APPROVAL PRIOR TO USE.
- REINFORCING STEEL SHALL BE DEFORMED STEEL CONFORMING TO THE REQUIREMENTS OF ASTM A615, GRADE 60. REINFORCING STEEL TO BE WELDED SHALL CONFORM TO REQUIREMENTS OF ASTM A706, GRADE 60.
- REINFORCING BARS SHALL BE SPLICED AS SHOWN ON DRAWINGS. ANY ADDITIONAL SPLICING SHALL REQUIRE PRIOR APPROVAL FROM THE ENGINEER OF RECORD.
- REINFORCING STEEL SHALL HAVE A MINIMUM PROTECTIVE COVERING CONCRETE AS FOLLOWS:
 - CONCRETE PLACED DIRECTLY AGAINST EARTH 3"
 - CONCRETE PLACED AGAINST FORMS BUT EXPOSED TO EARTH AND WEATHER:
BARS LARGER THAN No. 5 2"
No. 5 AND SMALLER 1 1/2"
 - CONCRETE PLACED AGAINST FORMS BUT NOT EXPOSED DIRECTLY TO EARTH OR WEATHER:
SLABS AND WALLS 1"
ALL OTHERS As per ACI 318-89
- ALL BARS SHALL BE CLEAN OF RUST, GREASE AND OTHER MATERIALS LIKELY TO IMPAIR BOND. ALL BENDS SHALL BE MADE COLD.
- FOR DETAILS OF RAIL FIXATION, REFER TO DETAIL 5 ON DRAWING ES7106-02.



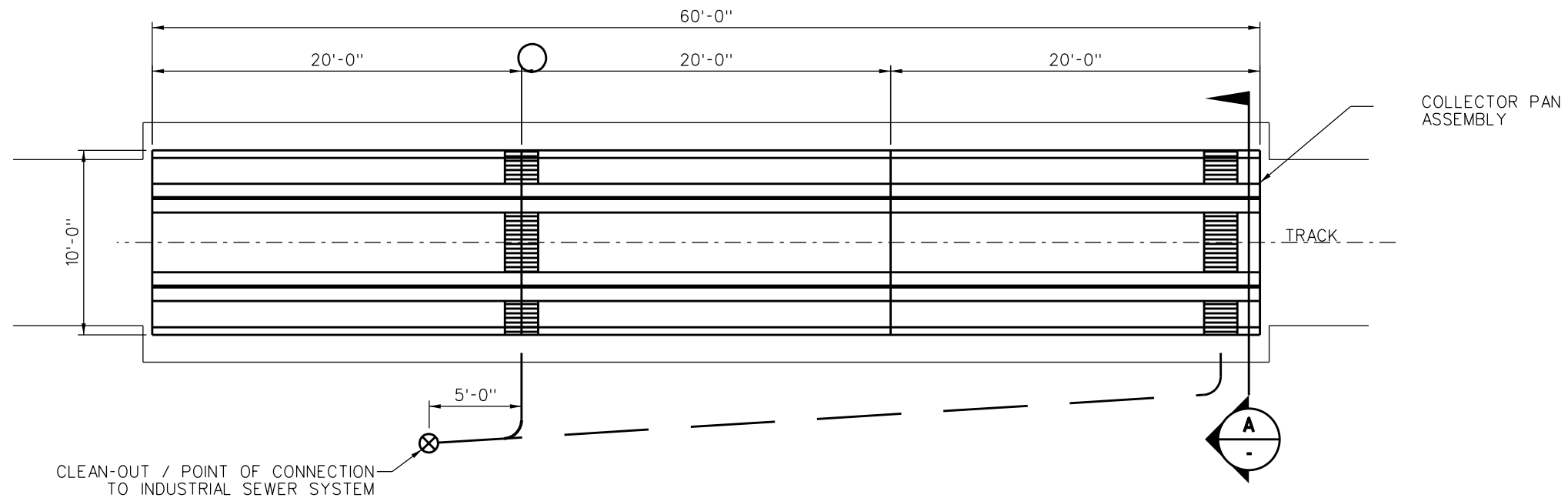
DETAIL A
SCALE: 1/2" = 1'-0"

REV.	DATE	DESCRIPTION	DES.	ENG.
X	XX-XX-XX	REVISION	XX	XX
1	10/5/2011	REVISION	XX	XX
2	10/5/2011	REVISION	XX	XX
3	10/5/2011	REVISION	XX	XX
4	10/5/2011	REVISION	XX	XX
5	10/5/2011	REVISION	XX	XX
6	10/5/2011	REVISION	XX	XX
7	10/5/2011	REVISION	XX	XX
8	10/5/2011	REVISION	XX	XX
9	10/5/2011	REVISION	XX	XX
10	10/5/2011	REVISION	XX	XX
11	10/5/2011	REVISION	XX	XX
12	10/5/2011	REVISION	XX	XX
13	10/5/2011	REVISION	XX	XX
14	10/5/2011	REVISION	XX	XX
15	10/5/2011	REVISION	XX	XX
16	10/5/2011	REVISION	XX	XX
17	10/5/2011	REVISION	XX	XX
18	10/5/2011	REVISION	XX	XX
19	10/5/2011	REVISION	XX	XX
20	10/5/2011	REVISION	XX	XX

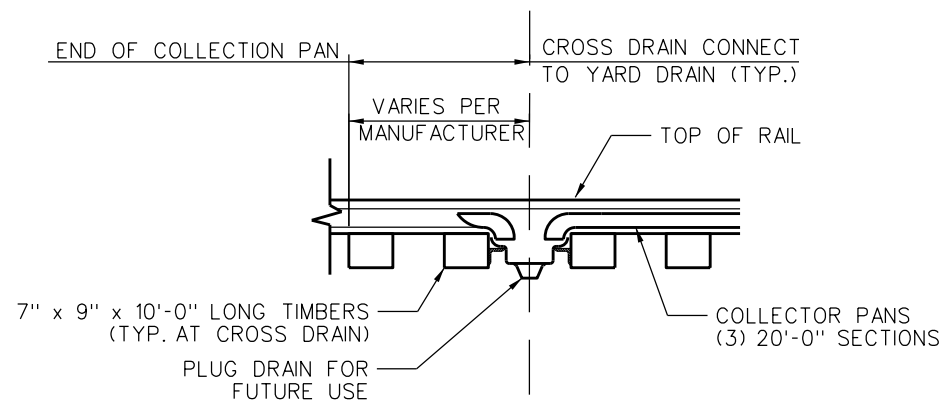
DRAWN BY:	A. CARLOS	DATE:	03/31/2011
DESIGNED BY:	NAREK D. BEE	DATE:	03/31/2011
CHECKED BY:	WILLIAM D. DAVIS	DATE:	03/31/2011
APPROVED BY:	WILLIAM D. DAVIS	DATE:	03/31/2011

METROLINK
SOUTHERN CALIFORNIA REGIONAL RAIL AUTHORITY
ONE GATEWAY PLAZA, 12TH FLOOR, L. A., CA. 90012

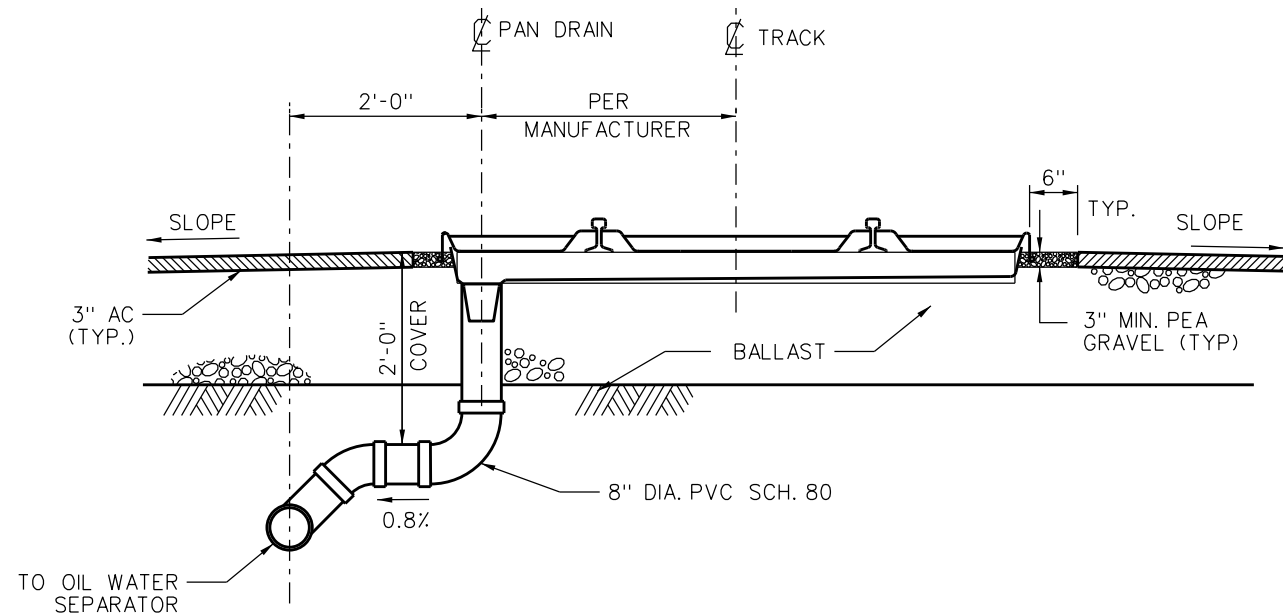
ENGINEERING STANDARDS	STANDARD 7105
JACKING PAD PLAN, SECTIONS AND DETAILS	SCALE: AS NOTED
	REVISION SHEET 1 OF 1
	CADD FILE: ES7105



PLAN AT OIL DRIP COLLECTOR PANS
SCALE: 1/4" = 1'-0"



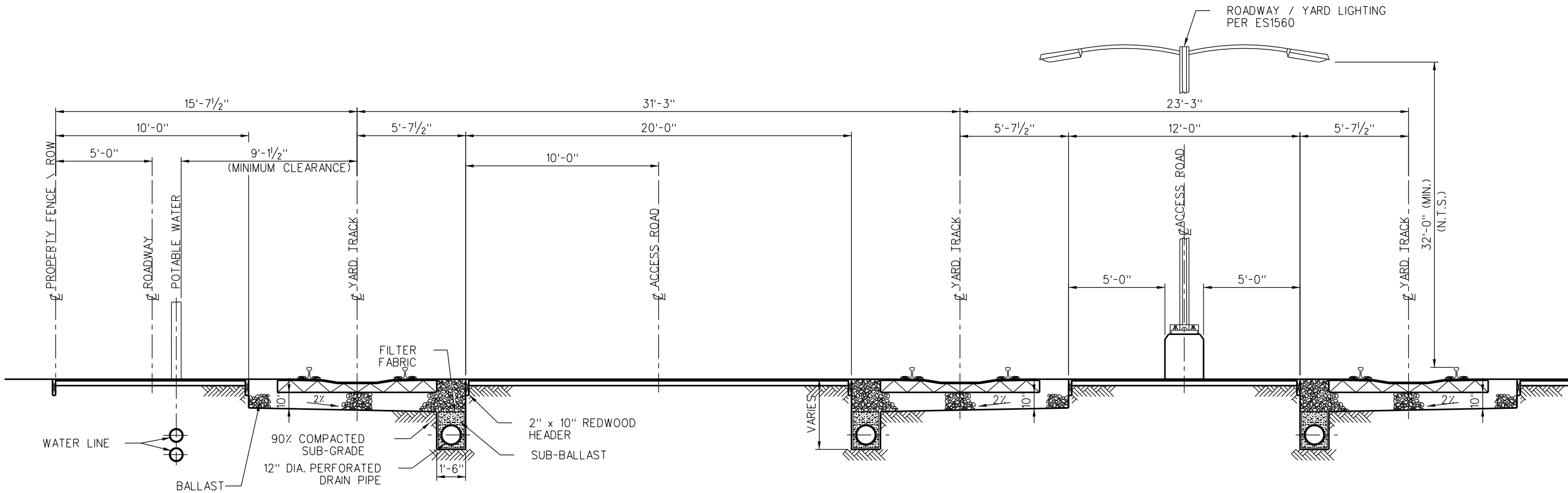
SIDE VIEW AT OIL DRIP COLLECTOR PAN
SCALE: 1" = 1'-0"



SECTION
SCALE: 1" = 1'-0"

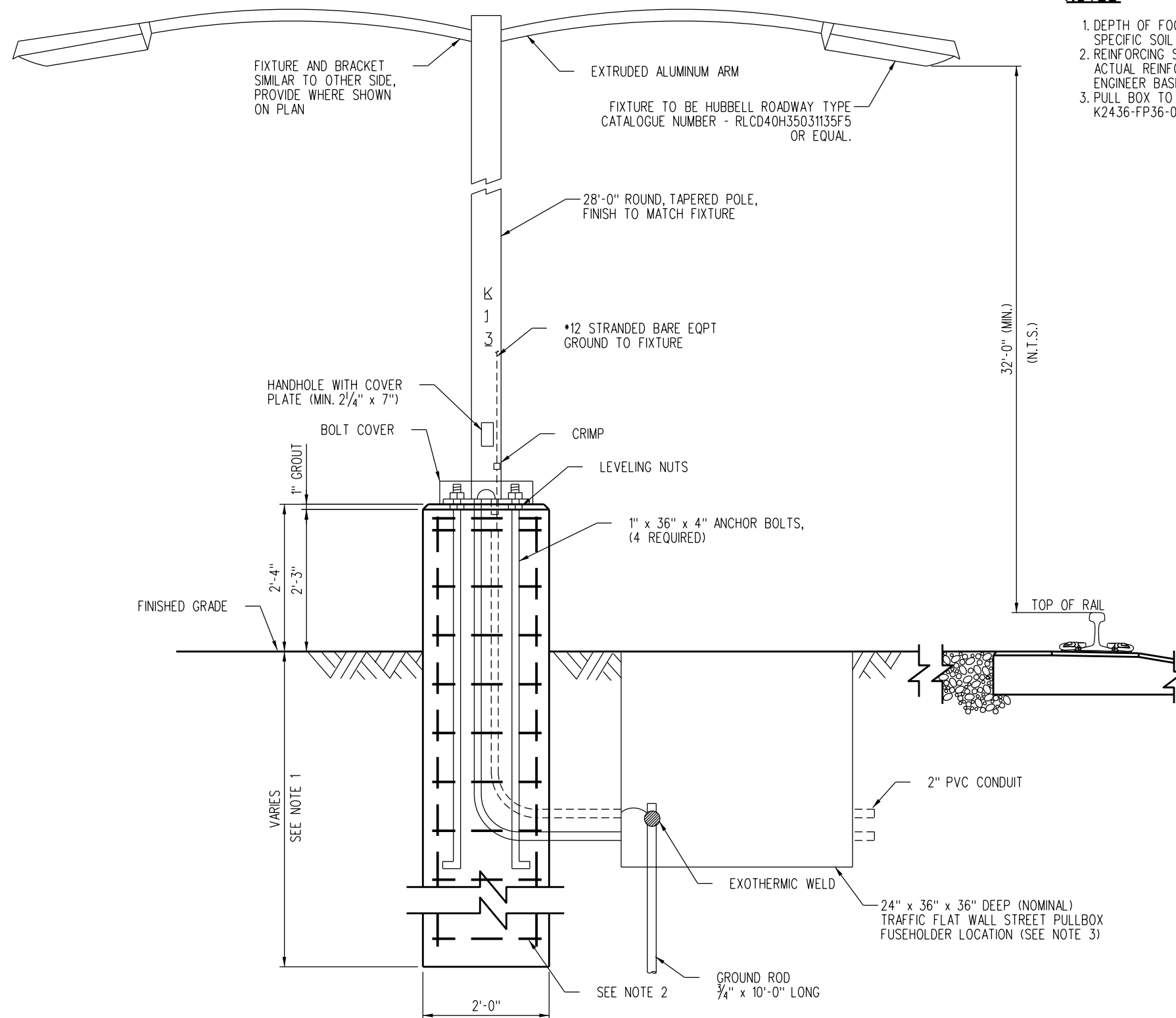
				DRAWN BY: A. CARLOS		DATE: 03/31/2011		SCRR ENGINEERING STANDARDS ARE INTENDED FOR SCRR APPROVED USES ONLY. FOR NON-SCRR APPROVED USES, SCRR SHALL NOT BE RESPONSIBLE FOR THE ACCURACY OR COMPLETENESS OF THE DATA OR INFORMATION CONTAINED HEREIN. THE SELECTION AND USE OF THESE STANDARDS IS THE SOLE RESPONSIBILITY OF THE USER AND SHOULD NOT BE USED WITHOUT CONSULTING A REGISTERED PROFESSIONAL ENGINEER. ALL WARRANTIES AND REPRESENTATIONS OF ANY KIND ARE DISCLAIMED. ANYONE MAKING USE OF THIS INFORMATION AGREES THAT IT ASSUMES ALL LIABILITY ARISING FROM SUCH USE. NO PART OF THESE STANDARDS SHOULD BE REPRODUCED OR DISTRIBUTED IN ANY FORM OR BY ANY MEANS WITHOUT THE PRIOR WRITTEN PERMISSION OF SCRR. ALL RIGHTS RESERVED.				ENGINEERING STANDARDS		STANDARD
				ASSISTANT DIRECTOR: STANDARDS & DESIGN				METROLINK®				OIL DRIP COLLECTOR PANS		7109
				DIRECTOR OF ENGINEERING AND CONSTRUCTION				SOUTHERN CALIFORNIA REGIONAL RAIL AUTHORITY				PLAN, ELEVATION AND SECTION		SCALE: AS NOTED
								ONE GATEWAY PLAZA, 12TH FLOOR, L. A., CA. 90012						REVISION SHEET
														1 OF 1
														CADD FILE: ES7109

- NOTES:**
- 1. DEPTH OF ASPHALT CONCRETE TO BE DETERMINED BASED ON SITE SPECIFIC SOIL CONDITIONS.
 - 2. SIZE OF STORM DRAIN AND SANITARY SEWER SYSTEMS ARE TO BE DETERMINED BASED ON SITE SPECIFIC CONDITIONS.
 - 3. LOCATIONS OF STORM DRAINS AND SLOPE FOR ROADWAYS TO BE DETERMINED BASED ON SITE SPECIFIC CONDITIONS.



ROADWAY SECTION

				DRAWN BY: A. CARLOS		DATE: 04/01/04		<div>SCRR ENGINEERING STANDARDS ARE INTENDED FOR SCRR APPROVED USES ONLY. FOR NON-SCRR APPROVED USES: SCRR SHALL NOT BE RESPONSIBLE FOR THE ACCURACY OR COMPLETENESS OF THE DATA OR INFORMATION CONTAINED HEREIN. THE SELECTION AND USE OF THESE STANDARDS IS THE SOLE RESPONSIBILITY OF THE USER AND SHOULD NOT BE USED WITHOUT CONSULTING A REGISTERED PROFESSIONAL ENGINEER. ALL WARRANTIES AND REPRESENTATIONS OF ANY KIND ARE DISCLAIMED. ANYONE MAKING USE OF THIS INFORMATION AGREES THAT IT ASSUMES ALL LIABILITY ARISING FROM SUCH USE. NO PART OF THESE STANDARDS SHOULD BE REPRODUCED OR DISTRIBUTED IN ANY FORM OR BY ANY MEANS WITHOUT THE PRIOR WRITTEN PERMISSION OF SCRR. ALL RIGHTS RESERVED.</div>		<div>METROLINK SOUTHERN CALIFORNIA REGIONAL RAIL AUTHORITY ONE GATEWAY PLAZA, 12TH FLOOR, L. A., CA. 90012</div>		ENGINEERING STANDARDS				STANDARD 7110					
				<div> ASSISTANT DIRECTOR: STANDARDS & DESIGN</div> <div> DIRECTOR OF ENGINEERING AND CONSTRUCTION</div>								SCALE: 3/8" = 1'-0"				REVISION SHEET					
																A 1 OF 1					
																CADD FILE: ES7110					
A 12-10-14				ADDED WATER LINE		AC NDP															
REV. DATE				DESCRIPTION		DES. ENG.															
\$USERS\$				Date Plotted: \$DATES\$		\$TIME\$						Plot Driver=> \$PLTDRL\$		\$FILENAME\$							



NOTES:

1. DEPTH OF FOOTING TO BE DETERMINED BASE ON SITE SPECIFIC SOIL CONDITIONS.
2. REINFORCING SHOWN FOR AESTHETIC PURPOSES ONLY. ACTUAL REINFORCING TO BE DETERMINED BY STRUCTURAL ENGINEER BASED ON SITE SPECIFIC CONDITIONS.
3. PULL BOX TO BE JENSEN PRECAST MODEL NUMBER K2436-FP36-05T OR EQUAL.

						DRAWN BY: A. CARLOS	DATE: 03/31/2011		
X	XX-XX-XX		REVISION		XX	XX			
REV.	DATE		DESCRIPTION		DES.	ENG.			

ASSISTANT DIRECTOR: STANDARDS & DESIGN

DIRECTOR OF ENGINEERING AND CONSTRUCTION

SCRR ENGINEERING STANDARDS ARE INTENDED FOR SCRR APPROVED USES ONLY. FOR NON-SCRR APPROVED USES, SCRR SHALL NOT BE RESPONSIBLE FOR THE ACCURACY OR COMPLETENESS OF THE DATA OR INFORMATION CONTAINED HEREIN. THE SELECTION AND USE OF THESE STANDARDS IS THE SOLE RESPONSIBILITY OF THE USER AND SHOULD NOT BE USED WITHOUT CONSULTING A REGISTERED PROFESSIONAL ENGINEER. ALL WARRANTIES AND REPRESENTATIONS OF ANY KIND ARE DISCLAIMED. ANYONE MAKING USE OF THIS INFORMATION AGREES THAT IT ASSUMES ALL LIABILITY ARISING FROM SUCH USE. NO PART OF THESE STANDARDS SHOULD BE REPRODUCED OR DISTRIBUTED IN ANY FORM OR BY ANY MEANS WITHOUT THE PRIOR WRITTEN PERMISSION OF SCRR. ALL RIGHTS RESERVED.



METROLINK

SOUTHERN CALIFORNIA REGIONAL RAIL AUTHORITY
ONE GATEWAY PLAZA, 12TH FLOOR, L. A., CA. 90012

ENGINEERING STANDARDS

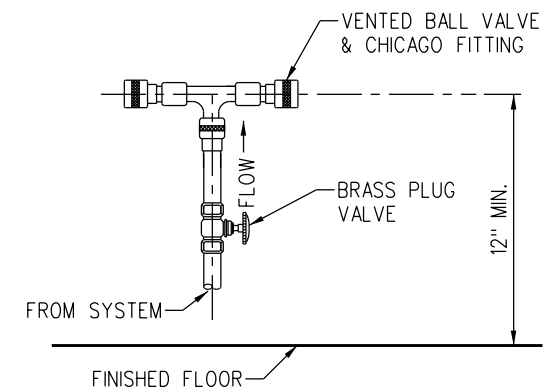
LIGHTING AT MAINTENANCE FACILITIES
FOUNDATION AND FIXTURE

STANDARD	7112
SCALE:	1" = 1'-0"
REVISION	SHEET
-	1 OF 1
CADD FILE:	ES7112

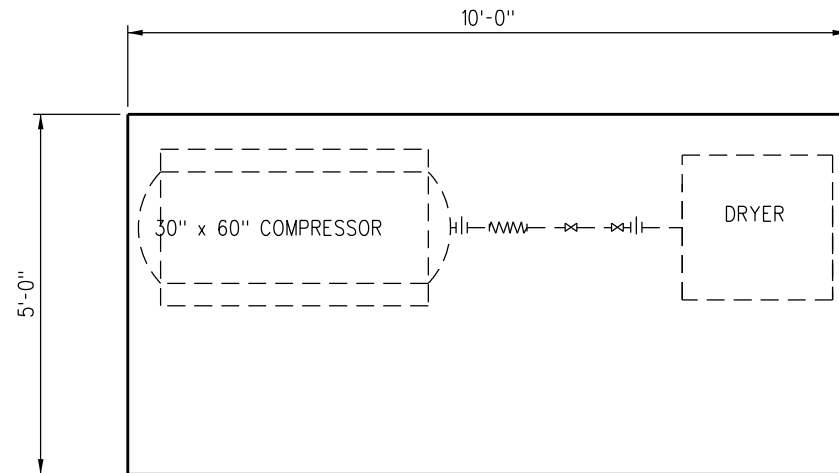


AIR DRYER SCHEDULE										
UNIT NO.	LOCATION	MFR	MAKE MODEL	TYPE	SCFM	MOTOR				REMARKS
						HP	VOLTS	PHASE	CYCLE	
AD-1	OUTSIDE	ZEKS HEATSINK	150HSE	REFRIGERATED DRYING	150	$\frac{3}{4}$ HP, 1KW	115	1	60	FOR OUTSIDE USE
AD-2	OUTSIDE	ZEKS HEATSINK	75HSB	REFRIGERATED DRYING	75	$\frac{3}{4}$ HP, 0.8KW	115	1	60	FOR OUTSIDE USE

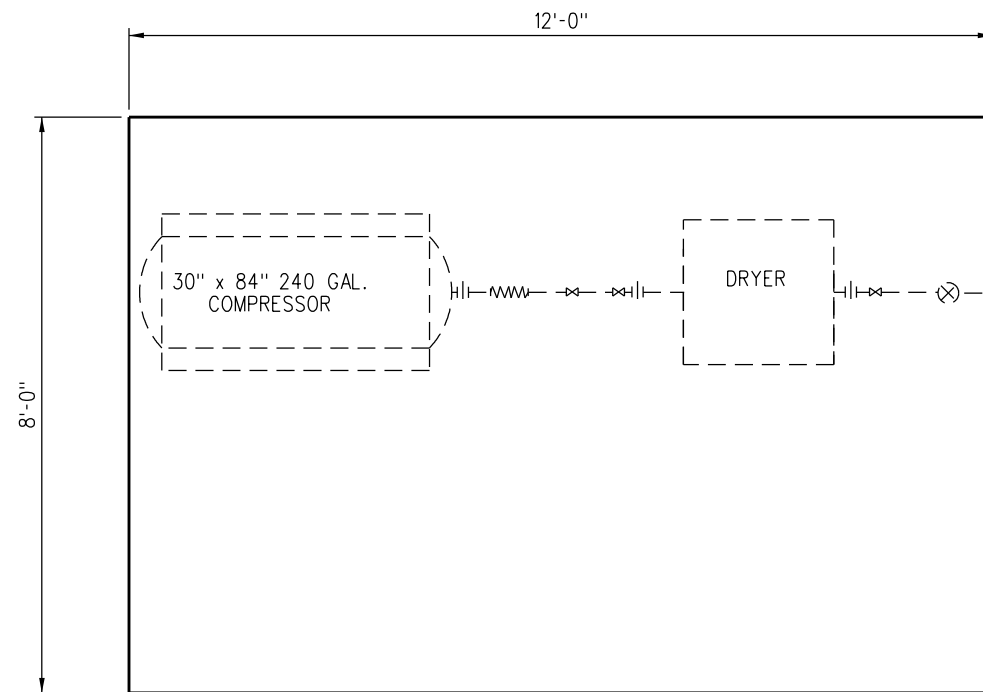
CONTRACTOR TO PROVIDE ADDITIONAL PIPING SUPPORTS AS NEEDED.



AIR COMPRESSOR OUTLET (AO-1)



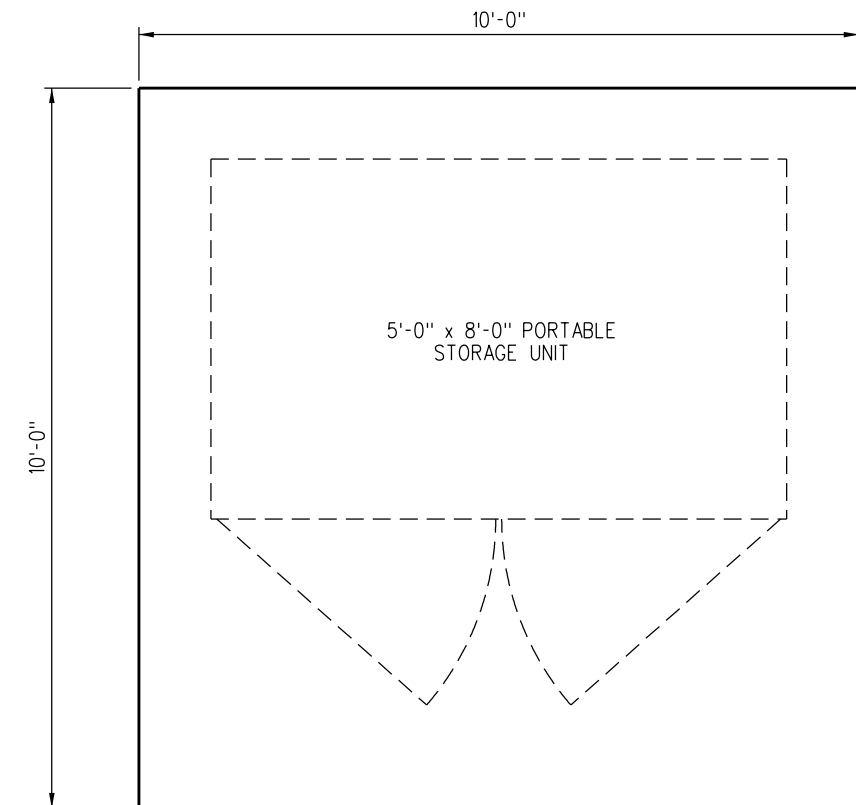
PLAN AT SIMPLEX COMPRESSOR FOUNDATION



PLAN AT COMPRESSOR FOUNDATION

NOTES:

1. CONTRACTOR TO SUBMIT PAD DETAILS PER SCRRA STANDARD SPECIFICATIONS.
2. FOUNDATION BOLTS SHOULD PROJECT THRU NUTS AT LEAST $\frac{1}{2}$ " TO ALLOW FOR LEVELING.



FOUNDATION PLAN

				DRAWN BY: A. CARLOS		DATE: 03/31/2011		<div>SCRRA ENGINEERING STANDARDS ARE INTENDED FOR SCRRA APPROVED USES ONLY. FOR NON-SCRRA APPROVED USES: SCRRA SHALL NOT BE RESPONSIBLE FOR THE ACCURACY OR COMPLETENESS OF THE DATA OR INFORMATION CONTAINED HEREIN. THE SELECTION AND USE OF THESE STANDARDS IS THE SOLE RESPONSIBILITY OF THE USER AND SHOULD NOT BE USED WITHOUT CONSULTING A REGISTERED PROFESSIONAL ENGINEER. ALL WARRANTIES AND REPRESENTATIONS OF ANY KIND ARE DISCLAIMED. ANYONE MAKING USE OF THIS INFORMATION AGREES THAT IT ASSUMES ALL LIABILITY ARISING FROM SUCH USE. NO PART OF THESE STANDARDS SHOULD BE REPRODUCED OR DISTRIBUTED IN ANY FORM OR BY ANY MEANS WITHOUT THE PRIOR WRITTEN PERMISSION OF SCRRA. ALL RIGHTS RESERVED.</div>	<div>METROLINK[®]</div> <div>SOUTHERN CALIFORNIA REGIONAL RAIL AUTHORITY ONE GATEWAY PLAZA, 12TH FLOOR, L. A., CA. 90012</div>	ENGINEERING STANDARDS		STANDARD		
												7201		
												SCALE: $\frac{3}{4}$ " = 1'-0"		
												REVISION SHEET		
X	XX-XX-XX	REVISION		XX	XX							- 2 OF 2		
REV.	DATE	DESCRIPTION		DES.	ENG.							CADD FILE:		
												ES7201-02		

UserName> carlosa

Date Plotted: 10/5/2011 2:30:34 PM

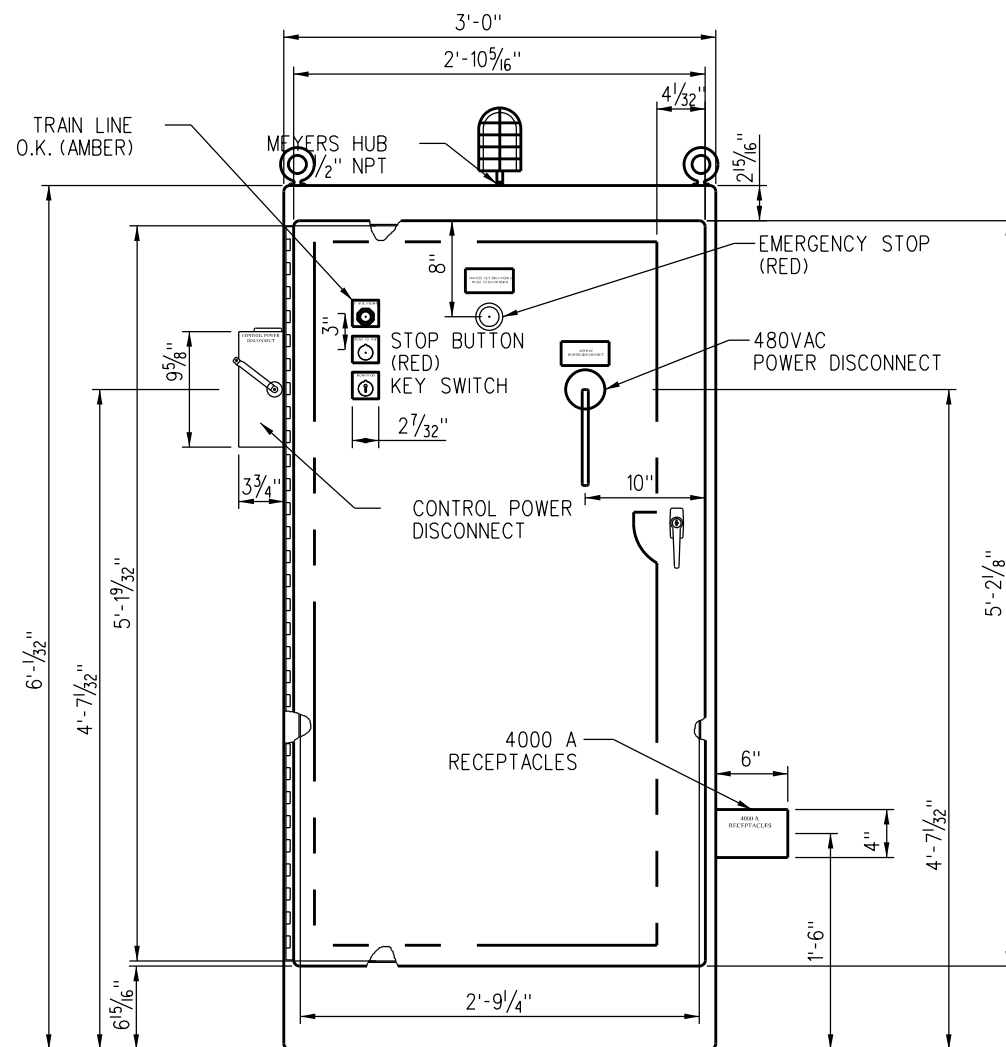
Plot Driver> S:\Plot Drivers\pdf.plt

FileName> s:\V8EngStds\7000\ES7201-02.dgn

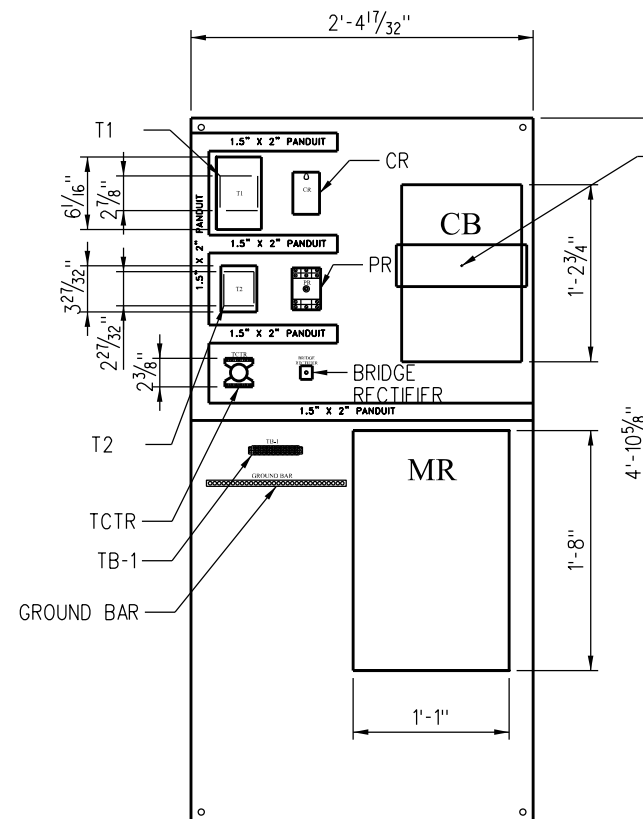
WITH TWO WAYSIDE POWER JUMPER CABLES
CONNECTED TO THE CABCAR OR LOCOMOTIVE:

1. MOVE THE EMERGENCY STOP BUTTON ON THE FRONT OF THE PANEL TO THE RUN POSITION (OUT).
2. MOVE THE CONTROL CIRCUIT KNIFE SWITCH LOCATED ON THE SIDE OF THE WAYSIDE POWER PANEL TO THE CONNECTED POSITION.
3. THE AMBER LIGHT OF THE WAYSIDE POWER CABINET WILL ILLUMINATE WHEN THERE IS CONTINUITY IN THE TRAINLINE CIRCUIT.
4. WHEN TRAINLINE IS ESTABLISHED ENERGIZED THE 480 VOLT POWER TO THE EQUIPMENT BY KEYING ON THE KEY SWITCH LOCATED ON THE FRONT OF THE WAYSIDE POWER CABINET.
5. WHEN THE 480 VOLT POWER IS ENERGIZED, THE RED LIGHT ON TOP OF THE WAYSIDE POWER PANEL WILL ILLUMINATE, THE AMBER TRAINLINE LIGHT WILL GO OUT, THE RED PUSH BUTTON ABOVE THE KEY SWITCH WILL ILLUMINATE.
6. TO SHUT DOWN THE 480 VOLT POWER, PUSH THE RED STOP BUTTON LOCATED ABOVE THE KEY SWITCH.
7. PHASING FOR WAYSIDE POWER SHALL BE SET FOR COUNTER CLOCKWISE.

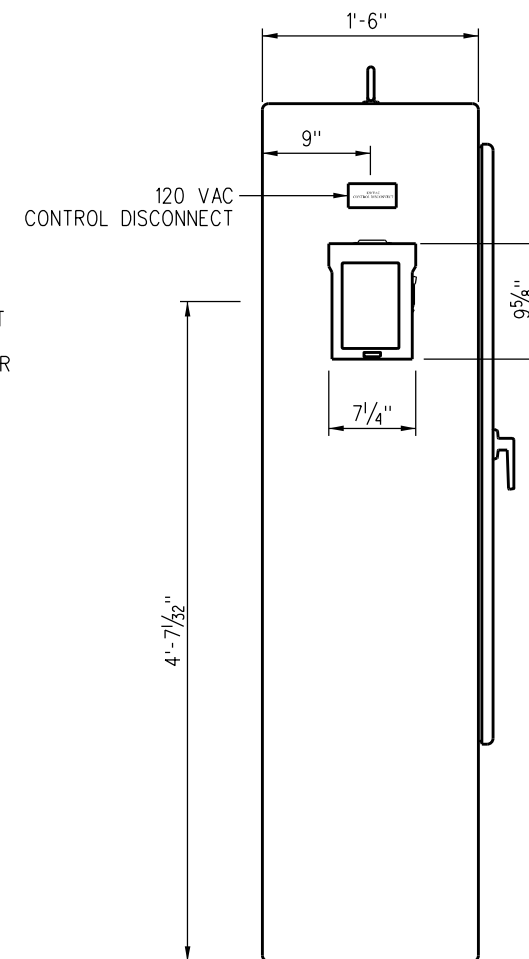
BILL OF MATERIAL			BILL OF MATERIAL (CONT.)			BILL OF MATERIAL (CONT.)		
QTY	ITEM DESCRIPTION	LEGEND	QTY	ITEM DESCRIPTION	LEGEND	QTY	ITEM DESCRIPTION	LEGEND
1	CIRCUIT BREAKER, 3 POLE, 600A, 480 VAC, ELECTRONIC TRIP	CB	1	CONTACT BLOCK, 1N.O. & N.C.	POWER ON	1	MOUNTING HOOD	
1	CONTACTOR, IEC, 3 POLE, 630A, 480 VAC, COIL VOLTAGE 120 VAC	M	1	MUSHROOM HEAD, RED, JUMBO	ESD	1	MEYERS HUB, 1/2"	RF
2	LUG KIT, 2 x 2 600 MCM	M	1	RELAY, 3 POLE, 2 N.O. & 1N.C., 120 VAC COIL	CR	1	CONDUIT NIPPLE, CLOSE x 1/2"	
1	SAFETY SWITCH, 2 POLE, 30A, 240 VAC, NEMA 3R	SW1	1	RELAY SOCKET	PR	2	LOCK NUT, 1/2"	
1	DOOR MOUNTED OPERATING MECHANISMS	CB	1	RELAY SOCKET	TCTR	2	BUSHING INSULATING, 1/2"	
1	CONTROL TRANSFORMER, 120/24 V	T2	1	RELAY, 24 VDC, 3 POLE, 11 PIN	TCTR	2	CONNECTOR	
1	CONTROL TRANSFORMER, 480/120-240 V	T1	1	RELAY, PHASE LOSS/ UNDER VOLTAGE, 480 VAC	PR	2	CONNECTOR	
1	KEY OPERATED SELECTOR SWITCH, 3 POSITION, SPRING RETURN TO CENTER	START	1	GROUND BAR		1	FUSES, TRM-10	F4
1	PUSH BUTTON OPERATOR	ESD	4	NAMEPLATE, LARGE NEMA DEVICE		1	FUSES, TRM-15	F3
1	PILOT LIGHT, AMBER, 120 VAC	A	3	NAMEPLATE, 3" x 4", RED WHITE LETTERS		2	FUSES, ATMR-5	F5 & F6
1	PUSH BUTTON, ILLUMINATED, RED, 120 VAC	G, STOP	1	ENCLOSURE, NEMA 4 1/2", 2 DOOR, LOCKABLE HANDLE		2	FUSES, ATMR-10	F1 & F2
1	CONTACT BLOCK, 1N.C.	ESD	1	BACK PANEL		1	TERMINAL BLOCK, 10 POLE, 30 A	
1	CONTACT BLOCK 1N.O.	ESD	1	PENANT FIXTURE		1	CABLE, WELDING, 4/0	
			2	HOUSING & CABLE ASSEMBLY - PYLE NATIONAL PART No.RPC1736SE1794 OR EQUAL				



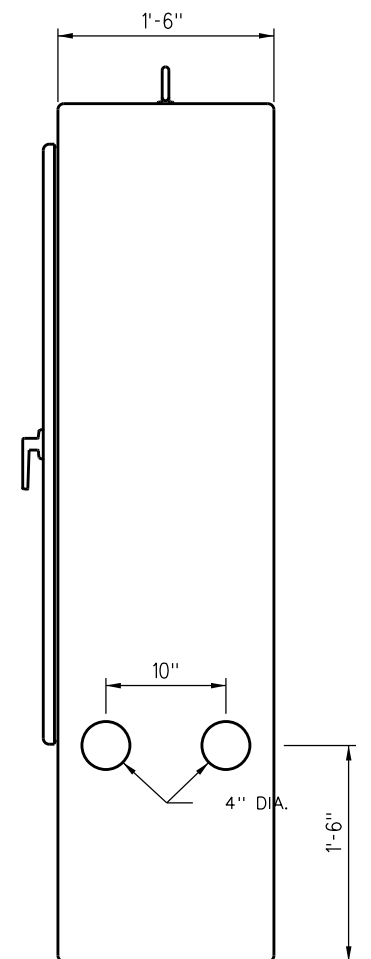
PANEL DOOR LAYOUT





BACK PANEL LAYOUT



LEFT SIDE PANEL LAYOUT



RIGHT SIDE PANEL LAYOUT

						DRAWN BY:	A. CARLOS	DATE:	03/31/2017
						 ASSISTANT DIRECTOR: STANDARDS & DESIGN  DIRECTOR OF ENGINEERING AND CONSTRUCTION			
X	XX-XX-XX		REVISION	XX	XX				
REV.	DATE		DESCRIPTION	DES.	ENG.				

1 SCRA ENGINEERING STANDARDS ARE INTENDED FOR SCRA APPROVED USES ONLY.
2 FOR NON-SCRA APPROVED USES
3 SCRA SHALL NOT BE RESPONSIBLE FOR THE ACCURACY OR COMPLETENESS OF
4 THE DATA OR INFORMATION CONTAINED HEREIN. THE SELECTION AND USE OF THESE
5 STANDARDS IS THE SOLE RESPONSIBILITY OF THE USER AND SHOULD NOT BE USED
6 WITHOUT CONSULTING A REGISTERED PROFESSIONAL ENGINEER. ALL WARRANTIES
7 AND REPRESENTATIONS OF ANY KIND ARE DISCLAIMED. ANYONE MAKING USE OF
8 THIS INFORMATION AGREES THAT IT ASSUMES ALL LIABILITY ARISING FROM SUCH
9 USE. USE OF THESE STANDARDS SHOULD BE REDUCED OR DISTRIBUTED IN
10 ANY FORM OR BY ANY MEANS WITHOUT THE PRIOR WRITTEN PERMISSION OF SCRA.
11 ALL RIGHTS RESERVED.



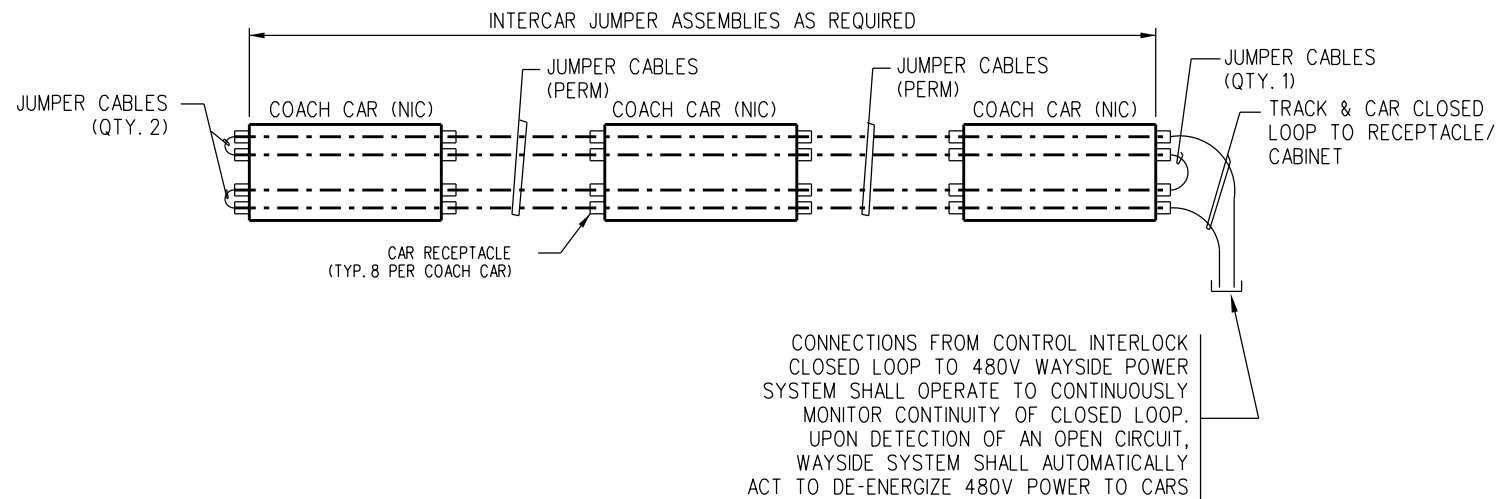
METROLINK®

SOUTHERN CALIFORNIA REGIONAL RAIL AUTHORITY
ONE GATEWAY PLAZA, 12TH FLOOR, L. A., CA. 90012

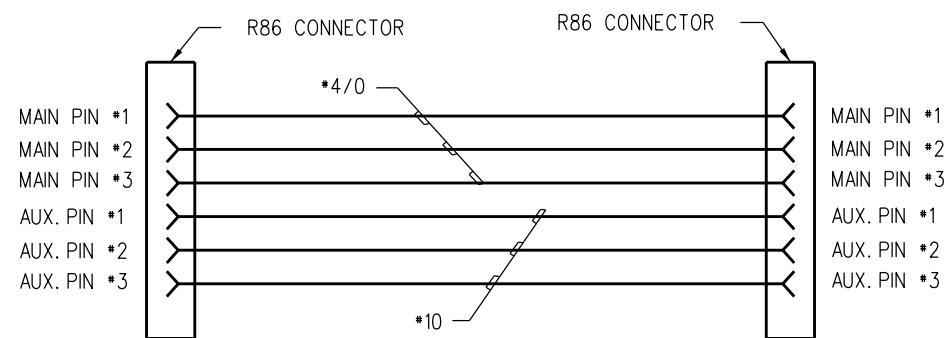
ENGINEERING STANDARDS

GROUND POWER SYSTEM PANEL LAYOUTS

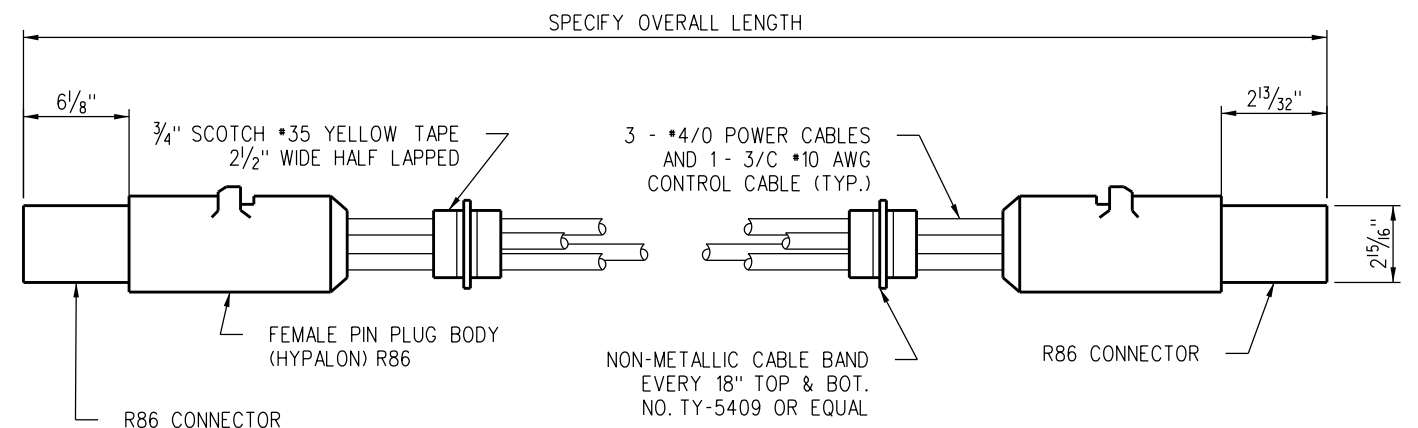
STANDARD	
7301	
SCALE:	
1 1/2" = 1'-0"	
REVISION	SHEET
-	2 OF 2
CADD FILE:	
ES7301-02	



PLAN VIEW - CONTROL INTERLOCK SCHEME FOR 480V STANDBY POWER



480-VOLT CORDSET SCHEMATIC



480-VOLT CORDSET

QUANTITY REQ'D.-2 FOR EACH 480-VOLT WAYSIDE POWER RECEPTACLE BOX OUTLET

480-VOLT OUTLET PIN UTILIZATIONS			
PIN	CONNECTION AT RECEPTACLE	CAR CONNECTION	FUNCTION
MAIN #1	'A' PHASE OF 480V FEEDER	480-V 'A' BUS	480-V POWER
MAIN #2	'B' PHASE OF 480V FEEDER	480-V 'B' BUS	480-V POWER
MAIN #3	'C' PHASE OF 480V FEEDER	480-V 'C' BUS	480-V POWER
AUX. #1	CONTROL INTERLOCK SYSTEM RELAY (S)	AUX. #1 PIN OF RECEPTACLE AT OPPOSITE END OF CAR	CONTROL CLOSED LOOP INTERLOCK
AUX. #2	GROUND	CHASIS GROUND	GROUNDING
AUX. #3			