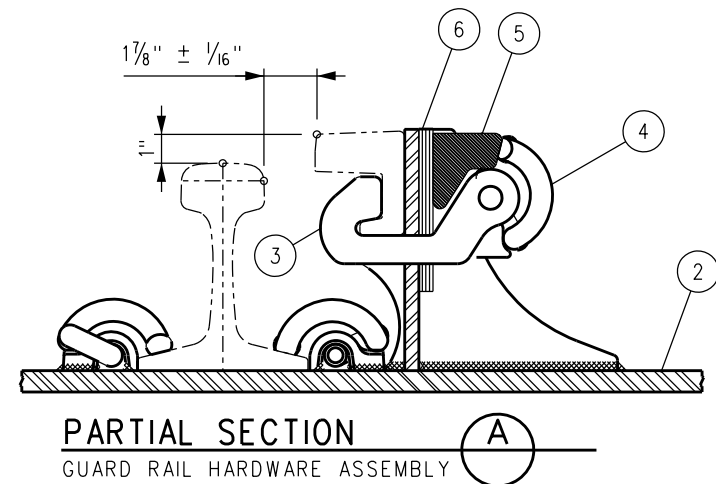


## DISCLAIMER

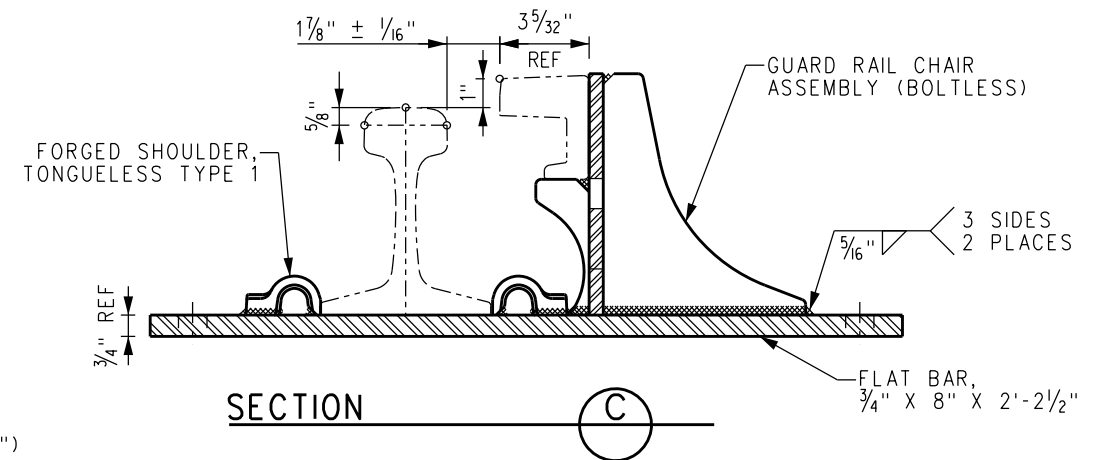
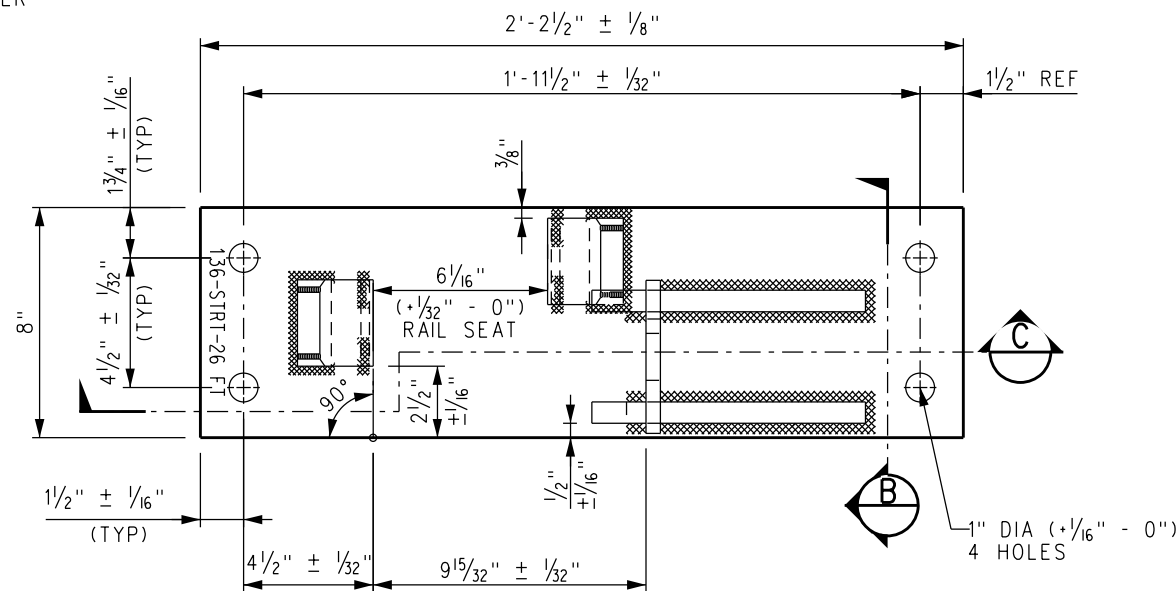
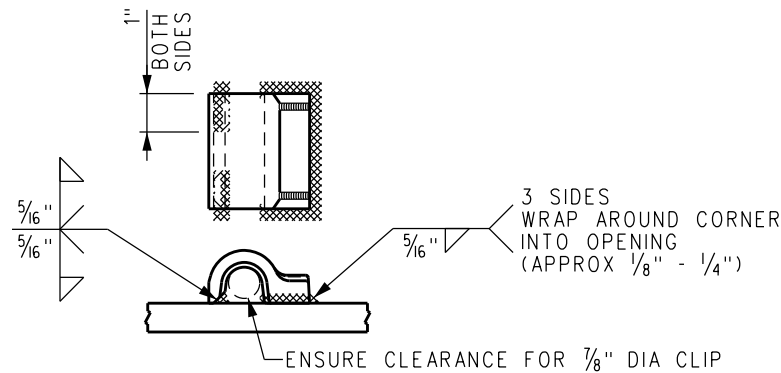
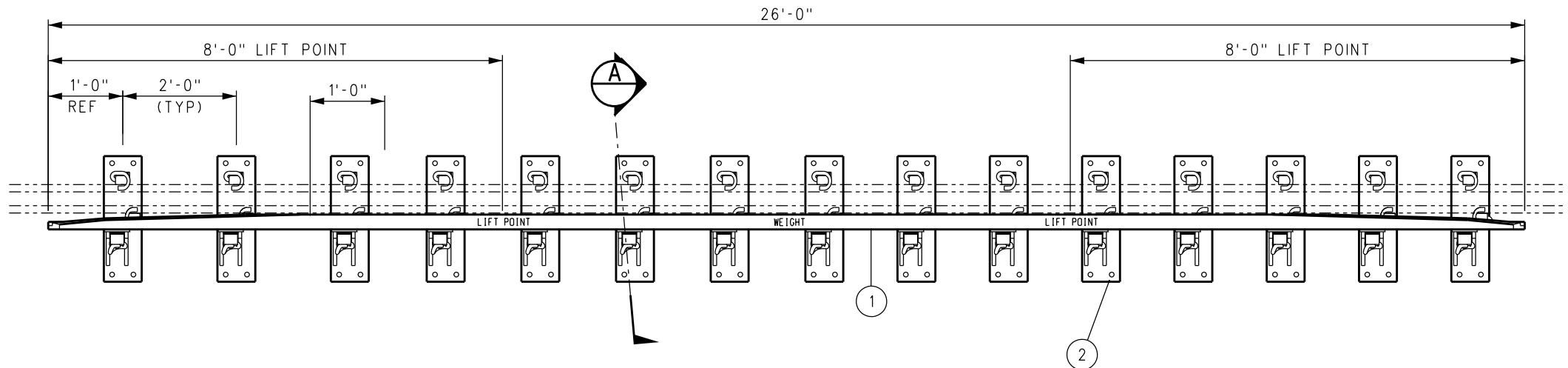
SCRRA Engineering Standards are intended for SCRRA approved uses only. FOR NON-SCRRA APPROVED USES: SCRRA and its member agencies, directors, officers, employees and/or agents shall not be responsible for the accuracy or completeness of the data or information contained herein. The selection and use of these standards, while designed in accordance with generally accepted engineering principles and practices, is the sole responsibility of the user and should not be used without consulting a registered professional engineer. All warranties and representations of any kind are disclaimed. Anyone making use of this information agrees that it assumes all liability arising from such use. No part of these standards should be reproduced or distributed in any form or by any means without the prior written permission of SCRRA. All rights reserved.

Since revisions or additions to the engineering standards may occur at any time, the user agrees to indemnify, defend, by counsel satisfactory to SCRRA and Member Agency, and hold harmless SCRRA, Member Agencies, and Operating Railroad, and their respective officers, commissioners, employees, agents, successors and assigns. ("Indemnitees"), and each of them to the maximum extent allowed by law, from and against all loss, liability, claims, demands, suits, liens, claims of lien, damages (including incidental consequential damages), costs and expenses (including, without limitation, any fines, penalties, judgments, actual litigation expenses and experts' and actual attorneys' fees), that are incurred by or asserted against Indemnitees arising out of or connected in any manner with the user's use of outdated engineering standards.

Updating the contents of the manual is a continued process, and revisions/replacements are issued periodically. Questions, comments, and proposed recommendations for changes may be sent to SCRRA at 279 E. Arrow Highway, Suite A, San Dimas, CA 91773.



BILL OF MATERIAL				
ITEM	QTY	DESCRIPTION	DWG NO	SCRRRA PART NO
1	1	GUARD BAR, UIC33 1200 SERIES x 26'-0" LONG	-	
2	13	GUARD RAIL PLATE ASSEMBLY, 136 LB RE RAISED 1", STRAIGHT	-	
3	13	H-CLAMP	-	
4	39	CLIP, PANDROL, E2055	-	
5	13	LOCKING BLOCK	-	
6	52	SHIM, 1/8" x 3" x 6"	-	



#### NOTES:

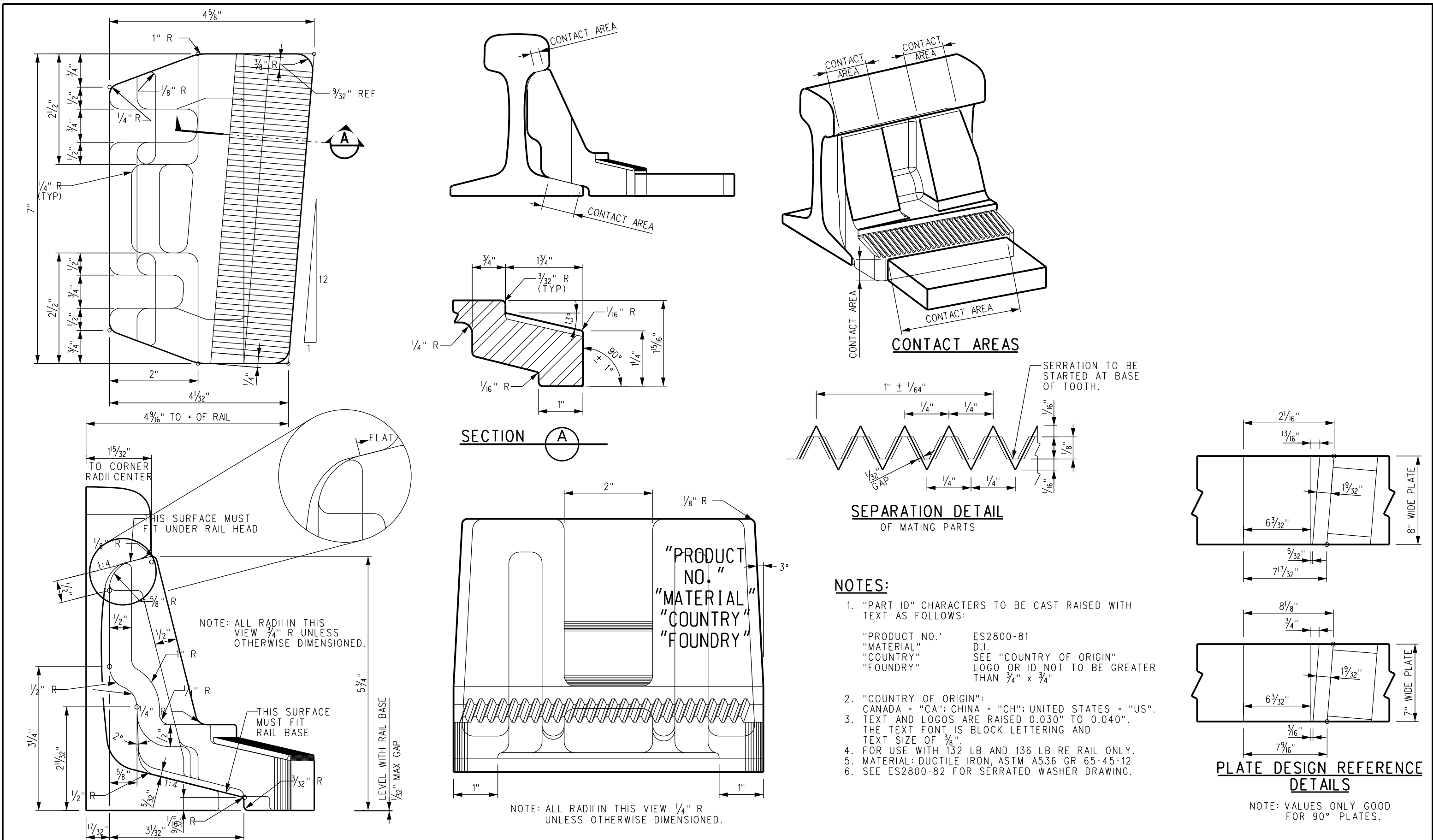
1. PLATE SPACING IS SET FOR SHIPPING ONLY. FINAL PLATE SPACING IS TO BE DETERMINED BY TIE SPACING AT TIME OF INSTALLATION.
2. PANDROL SPRING CLIPS (E2055) TO BE INCLUDED IN ASSEMBLY.
3. LIFT POINTS AND WEIGHT OF ASSEMBLY TO BE MARKED ON HEAD OF WEAR BAR WITH WHITE PAINT.
4. PLATE IS TO BE STAMPED WITH PLATE I.D. WITH 1/2" HIGH CHARACTERS AS SHOWN.
5. GRIND AWAY CORNER OF PANDROL SHOULDER TO CLEAR FOOT OF CHAIR ASSEMBLY.

DRAWN BY: HDR DATE: 03/31/2011				SCRRRA ENGINEERING STANDARDS ARE INTENDED FOR SCRRRA APPROVED USES ONLY. FOR NON-SCRRRA APPROVED USES, SCRRRA SHALL NOT BE RESPONSIBLE FOR THE ACCURACY OR COMPLETENESS OF THE DATA OR INFORMATION CONTAINED HEREIN. THE SELECTION AND USE OF THESE STANDARDS IS THE SOLE RESPONSIBILITY OF THE USER AND SHOULD NOT BE USED WITHOUT CONSULTING A REGISTERED PROFESSIONAL ENGINEER. ALL WARRANTIES AND REPRESENTATIONS OF ANY KIND ARE DISCLAIMED. ANYONE MAKING USE OF THIS INFORMATION AGREES THAT IT ASSUMES ALL LIABILITY ARISING FROM SUCH USE. NO PART OF THESE STANDARDS SHOULD BE REPRODUCED OR DISTRIBUTED IN ANY FORM OR BY ANY MEANS WITHOUT THE PRIOR WRITTEN PERMISSION OF SCRRRA. ALL RIGHTS RESERVED.				ENGINEERING STANDARDS				STANDARD
REVISION				SOUTHERN CALIFORNIA REGIONAL RAIL AUTHORITY				GUARD RAIL ASSEMBLY, STRAIGHT WITH PLATES				2800
DATE				ONE GATEWAY PLAZA, 12TH FLOOR, L. A., CA. 90012				26'-0" LONG, BOLTLESS, RAISED 1"				NTS
DESCRIPTION								CONCRETE TIES - 136 LB RE RAIL, 1 7/8" FLANGWAY				1 OF 1
DES.												ES2800-50

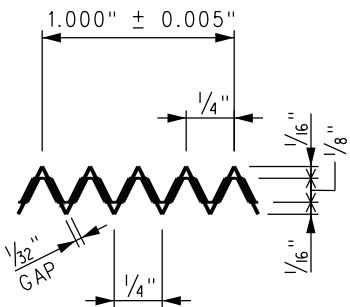
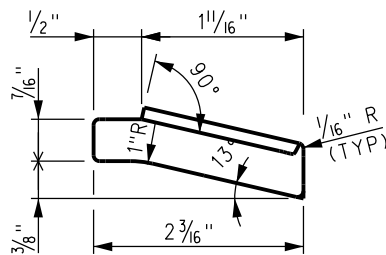
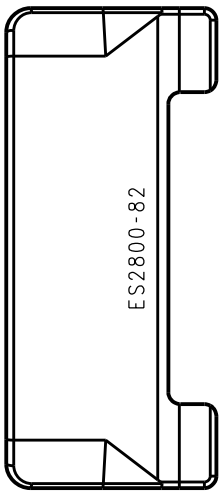
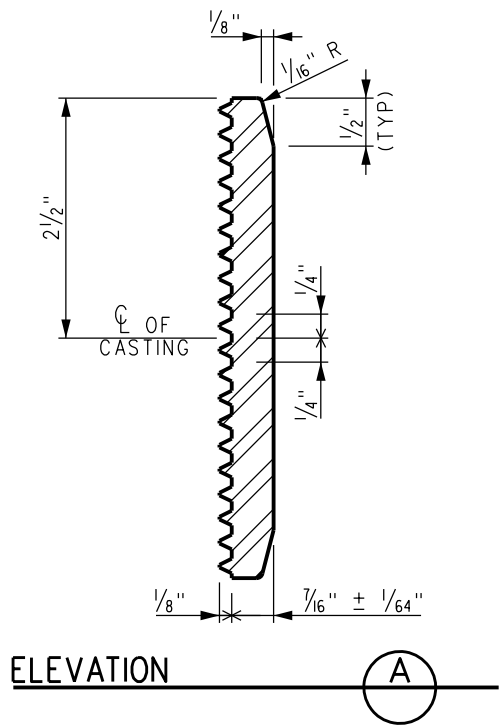
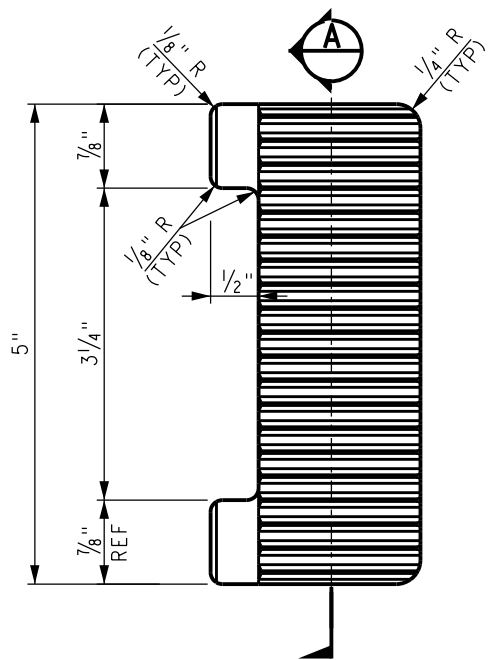


NOTES:

- |      |            |             |           |      |  |            |   |   |                       |  |          |      |
|------|------------|-------------|-----------|------|--|------------|---|---|-----------------------|--|----------|------|
|      |            |             | DRAWN BY: | HDR  | DATE:  | 03/31/2011 | SCRR ENGINEERING STANDARDS ARE INTENDED FOR SCRR APPROVED USES ONLY.<br>FOR NON-SCRR APPROVED USES:<br>SCRR SHALL NOT BE RESPONSIBLE FOR THE ACCURACY OR COMPLETENESS OF<br>THE DATA OR INFORMATION CONTAINED HEREIN. THE SELECTION AND USE OF THESE<br>STANDARDS IS THE SOLE RESPONSIBILITY OF THE USER AND SHOULD NOT BE USED<br>WITHOUT CONSULTING A REGISTERED PROFESSIONAL ENGINEER. ALL WARRANTIES<br>AND REPRESENTATIONS OF ANY KIND ARE DISCLAIMED. ANYONE MAKING USE OF<br>THIS INFORMATION AGREES THAT IT ASSUMES LIABILITY FROM SUCH<br>USE. NO PART OF THESE STANDARDS SHOULD BE REPRODUCED OR DISTRIBUTED IN<br>ANY FORM OR BY ANY MEANS WITHOUT THE PRIOR WRITTEN PERMISSION OF SCRR.<br>ALL RIGHTS RESERVED. | <b>METROLINK®</b><br>SOUTHERN CALIFORNIA REGIONAL RAIL AUTHORITY<br>ONE GATEWAY PLAZA, 12TH FLOOR, L. A., CA. 90012 | ENGINEERING STANDARDS |  | STANDARD | 2800 |
|      |            |             |           |      |  |            | SCALE:  |   | NTS                   |  |          |      |
| X    | XX--XX--XX | REVISION    | XX        | XX   | SWITCH PLATES BRACES BP1C AND BP2C,<br>PLATE P4C-136 AND ROLLER PLATE 10-TRLCL<br>FOR 136 LB RE CONCRETE TIE TURNOUT |            |   |   |                       |  |          |      |
| REV. | DATE       | DESCRIPTION | DES.      | ENG. | REVISION SHEET<br>— 1 OF 1   |            |   |   |                       |  |          |      |
|      |            |             |           |      |  |            | CADD FILE:  |   | ES2800~80             |  |          |      |
|      |            |             |           |      |  |            |   |   |                       |  |          |      |



--	--	--	--	--	--	--	--	--	--	--	--	--	--	--	--	--	--	--	--	--	--	--	--	--	--	--	--	--	--	--	--	--	--	--	--	--	--	--	--	--	--	--	--	--	--	--	--	--	--	--	--	--	--	--	--	--	--	--	--	--	--	--	--	--	--	--	--	--	--	--	--	--	--	--	--	--	--	--	--	--	--	--	--	--	--	--	--	--	--	--	--	--	--	--	--	--	--	--	--	--	--	--	--	--	--	--	--	--	--	--	--	--	--	--	--	--	--	--	--	--	--	--	--	--	--	--	--	--	--	--	--	--	--	--	--	--	--	--	--	--	--	--	--	--	--	--	--	--	--	--	--	--	--	--	--	--	--	--	--	--	--	--	--	--	--	--	--	--	--	--	--	--	--	--	--	--	--	--	--	--	--	--	--	--	--	--	--	--	--	--	--	--	--	--	--	--	--	--	--	--	--	--	--	--	--	--	--	--	--	--	--	--	--	--	--	--	--	--	--	--	--	--	--	--	--	--	--	--	--	--	--	--	--	--	--	--	--	--	--	--	--	--	--	--	--	--	--	--	--	--	--	--	--	--	--	--	--	--	--	--	--	--	--	--	--	--	--	--	--	--	--	--	--	--	--	--	--	--	--	--	--	--	--	--	--	--	--	--	--	--	--	--	--	--	--	--	--	--	--	--	--	--	--	--	--	--	--	--	--	--	--	--	--	--	--	--	--	--	--	--	--	--	--	--	--	--	--	--	--	--	--	--	--	--	--	--	--	--	--	--	--	--	--	--	--	--	--	--	--	--	--	--	--	--	--	--	--	--	--	--	--	--	--	--	--	--	--	--	--	--	--	--	--	--	--	--	--	--	--	--	--	--	--	--	--	--	--	--	--	--	--	--	--	--	--	--	--	--	--	--	--	--	--	--	--	--	--	--	--	--	--	--	--	--	--	--	--	--	--	--	--	--	--	--	--	--	--	--	--	--	--	--	--	--	--	--	--	--	--	--	--	--	--	--	--	--	--	--	--	--	--	--	--	--	--	--	--	--	--	--	--	--	--	--	--	--	--	--	--	--	--	--	--	--	--	--	--	--	--	--	--	--	--	--	--	--	--	--	--	--	--	--	--	--	--	--	--	--	--	--	--	--	--	--	--	--	--	--	--	--	--	--	--	--	--	--	--	--	--	--	--	--	--	--	--	--	--	--	--	--	--	--	--	--	--	--	--	--	--	--	--	--	--	--	--	--	--	--	--	--	--	--	--	--	--	--	--	--	--	--	--	--	--	--	--	--	--	--	--	--	--	--	--	--	--	--	--	--	--	--	--	--	--	--	--	--	--	--	--	--	--	--	--	--	--	--	--	--	--	--	--	--	--	--	--	--	--	--	--	--	--	--	--	--	--	--	--	--	--	--	--	--	--	--	--	--	--	--	--	--	--	--	--	--	--	--	--	--	--	--	--	--	--	--	--	--	--	--	--	--	--	--	--	--	--	--	--	--	--	--	--	--	--	--	--	--	--	--	--	--	--	--	--	--	--	--	--	--	--	--	--	--	--	--	--	--	--	--	--	--	--	--	--	--	--	--	--	--	--	--	--	--	--	--	--	--	--	--	--	--	--	--	--	--	--	--	--	--	--	--	--	--	--	--	--	--	--	--	--	--	--	--	--	--	--	--	--	--	--	--	--	--	--	--	--	--	--	--	--	--	--	--	--	--	--	--	--	--	--	--	--	--	--	--	--	--	--	--	--	--	--	--	--	--	--	--	--	--	--	--	--	--	--	--	--	--	--	--	--	--	--	--	--	--	--	--	--	--	--	--	--	--	--	--	--	--	--	--	--	--	--	--	--	--	--	--	--	--	--	--	--	--	--	--	--	--	--	--	--	--	--	--	--	--	--	--	--	--	--	--	--	--	--	--	--	--	--	--	--	--	--	--	--	--	--	--	--	--	--	--	--	--	--	--	--	--	--	--	--	--	--	--	--	--	--	--	--	--	--	--	--	--	--	--	--	--	--	--	--	--	--	--	--	--	--	--	--	--	--	--	--	--	--	--	--	--	--	--	--	--	--	--	--	--	--	--	--	--	--	--	--	--	--	--	--	--	--	--	--	--	--	--	--	--	--	--	--	--	--	--	--	--	--	--	--	--	--	--	--	--	--	--	--	--	--	--	--	--	--	--	--	--	--	--	--	--	--	--	--	--	--	--	--	--	--	--	--	--	--	--	--	--	--	--	--	--	--	--	--	--	--	--	--	--	--	--	--	--	--	--	--	--	--	--	--	--	--	--	--	--	--	--	--	--	--	--	--	--	--	--	--	--	--	--	--	--	--	--	--	--	--	--	--	--	--	--	--	--	--	--	--	--	--	--	--	--	--	--	--	--	--	--	--	--	--	--	--	--	--	--	--	--	--	--	--	--	--	--	--	--	--	--	--	--	--	--	--	--	--	--	--	--	--	--	--	--	--	--	--	--	--	--	--	--	--	--	--	--	--	--	--	--	--	--	--	--	--	--	--	--	--	--	--	--	--	--	--	--	--	--	--	--	--	--	--	--	--	--	--	--	--	--	--	--	--	--	--	--	--	--	--	--	--	--	--	--	--	--	--	--	--	--	--	--	--	--	--	--	--	--	--	--	--	--	--	--	--	--	--	--	--	--	--	--	--	--	--	--	--	--	--	--	--	--	--	--	--	--	--	--	--	--	--	--	--	--	--	--	--	--	--	--	--	--	--	--	--	--	--	--	--	--	--	--	--	--	--	--	--	--	--	--	--	--	--	--	--	--	--	--	--	--	--	--	--	--	--	--	--	--	--	--	--	--	--	--	--	--	--	--	--	--	--	--	--	--	--	--	--	--	--	--	--	--	--	--	--	--	--	--	--	--	--	--	--	--	--	--	--	--	--	--	--	--	--	--	--	--	--	--	--	--	--	--	--	--	--	--	--	--	--	--	--	--	--	--	--	--	--	--	--	--	--	--	--	--	--	--	--	--	--	--	--	--	--	--	--	--	--	--	--	--	--	--	--	--	--	--	--	--	--	--	--	--	--	--	--	--	--	--	--	--	--	--	--	--	--	--	--	--	--	--	--	--	--	--	--	--	--	--	--	--	--	--	--	--	--	--	--	--	--	--	--	--	--	--	--	--	--	--	--	--	--	--	--	--	--	--	--	--	--	--	--	--	--	--	--	--	--	--	--	--	--	--	--	--	--	--	--	--	--	--	--	--	--	--	--	--	--	--	--	--	--	--	--	--	--	--	--	--	--	--	--	--	--	--	--	--	--	--	--	--	--	--	--	--	--	--	--	--	--	--	--	--	--	--	--	--	--	--	--	--	--	--	--	--	--	--	--	--	--	--	--	--	--	--	--	--	--	--	--	--	--	--	--	--	--	--	--	--	--	--	--	--	--	--	--	--	--	--	--	--	--	--	--	--	--	--	--	--	--	--	--	--	--	--	--	--	--	--	--	--	--	--	--	--	--	--	--	--	--	--	--	--	--	--	--	--	--	--	--	--	--	--	--	--	--	--	--	--	--	--	--	--	--	--	--	--	--	--	--	--	--	--	--	--	--	--	--	--	--	--	--	--	--	--	--	--	--	--	--	--	--	--	--	--	--	--	--	--	--	--	--	--	--	--	--	--	--	--	--	--	--	--	--	--	--	--	--	--	--	--	--	--	--	--	--	--	--	--	--	--



**SERRATION DETAIL**  
OF MATING PARTS  
(ALL DIMENSIONS ± 1/64")

- NOTES:**
1. MATERIAL - DUCTILE IRON ASTM Gr 536-G 65-45-12 OR ACCEPTABLE ALTERNATE AISI/SAE 1020
  2. PARTS TO BE CAST INDENTED WITH TEXT ES2800-82.

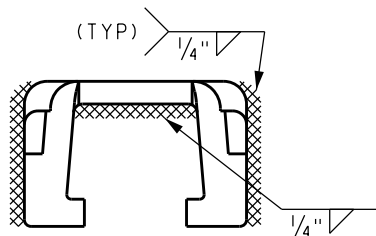
				DRAWN BY: HDR DATE: 03/31/2011		<div>SCRR ENGINEERING STANDARDS ARE INTENDED FOR SCRR APPROVED USES ONLY. FOR NON-SCRR APPROVED USES, SCRR SHALL NOT BE RESPONSIBLE FOR THE ACCURACY OR COMPLETENESS OF THE DATA OR INFORMATION CONTAINED HEREIN. THE SELECTION AND USE OF THESE STANDARDS IS THE SOLE RESPONSIBILITY OF THE USER AND SHOULD NOT BE USED WITHOUT CONSULTING A REGISTERED PROFESSIONAL ENGINEER. ALL WARRANTIES AND REPRESENTATIONS OF ANY KIND ARE DISCLAIMED. ANYONE MAKING USE OF THIS INFORMATION AGREES THAT IT ASSUMES ALL LIABILITY ARISING FROM SUCH USE. NO PART OF THESE STANDARDS SHOULD BE REPRODUCED OR DISTRIBUTED IN ANY FORM OR BY ANY MEANS WITHOUT THE PRIOR WRITTEN PERMISSION OF SCRR. ALL RIGHTS RESERVED.</div>	<div><b>METROLINK®</b> SOUTHERN CALIFORNIA REGIONAL RAIL AUTHORITY ONE GATEWAY PLAZA, 12TH FLOOR, L. A., CA. 90012</div>	ENGINEERING STANDARDS		STANDARD 2800	
								SCALE: NTS			
								SERRATED WASHER FOR BOLTLESS BRACE			
								REVISION SHEET 1 OF 1			
								CADD FILE: ES2800-82			

NOTE:

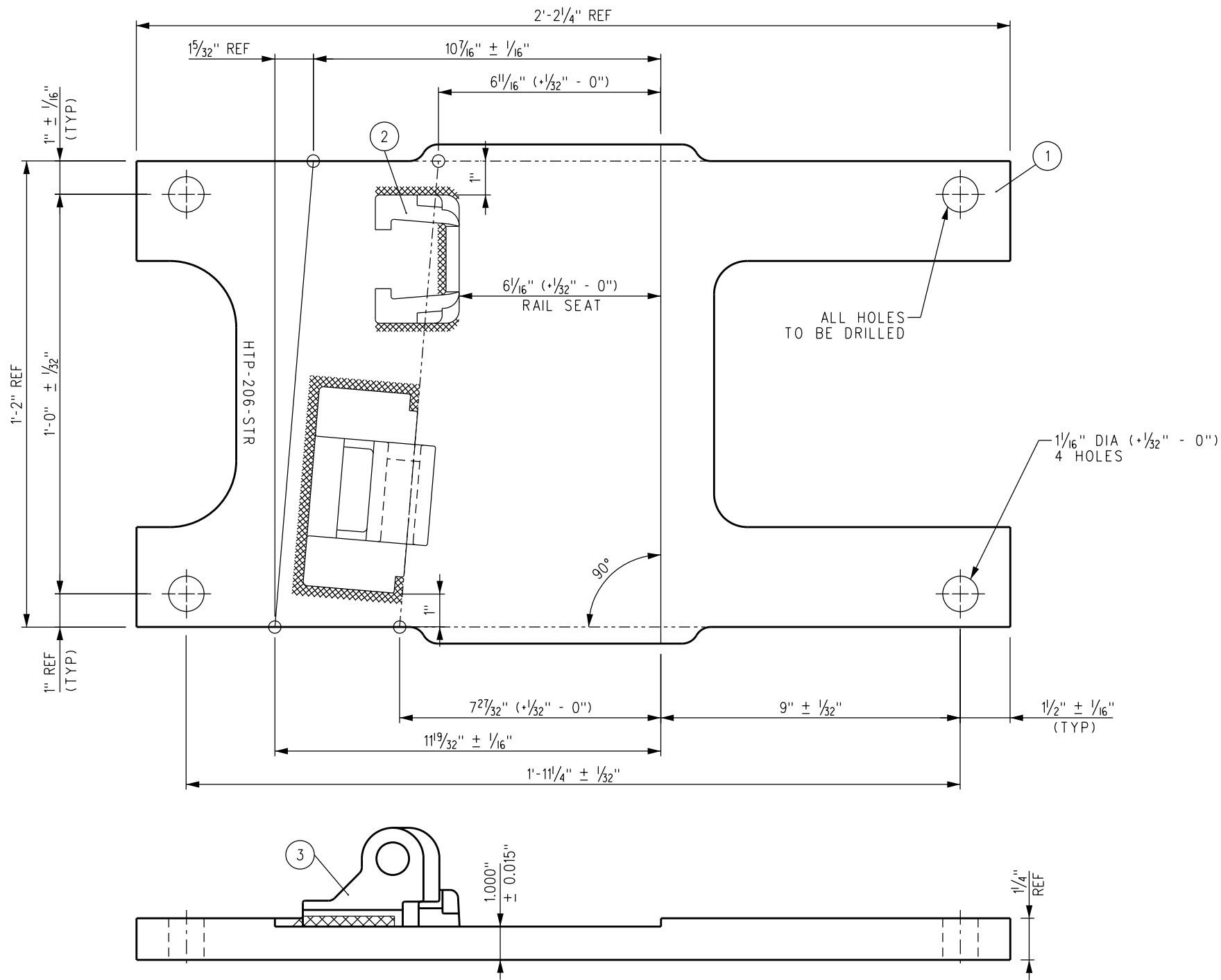
1. I.D. CHARACTERS TO BE  $\frac{5}{8}$ " MINIMUM HEIGHT CLEARLY STAMPED AS SHOWN.
2. SLOTTED HOLE CENTERS ARE INDICATED ON DRAWING.

BILL OF MATERIAL

ITEM	QTY FOR HTP-206-STR	DESCRIPTION	DWG NO	SCRRRA PART NO
1	1	BURNED SWITCH PLATE, $1\frac{1}{4}$ " THICK	-	
2	1	SAFELOK SHOULDER	-	
3	1	LV BRACE RETENTION BLOCK	-	

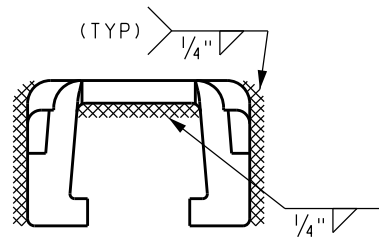


TYPICAL SAFELOK WELD-ON CAST  
SHOULDER WELDING DETAILS



HTP-206-STR

				DRAWN BY: HDR DATE: 03/31/2011		SCRRRA ENGINEERING STANDARDS ARE INTENDED FOR SCRRRA APPROVED USES ONLY. FOR NON-SCRRRA APPROVED USES, SCRRRA SHALL NOT BE RESPONSIBLE FOR THE ACCURACY OR COMPLETENESS OF THE DATA OR INFORMATION CONTAINED HEREIN. THE SELECTION AND USE OF THESE STANDARDS IS THE SOLE RESPONSIBILITY OF THE USER AND SHOULD NOT BE USED WITHOUT CONSULTING A REGISTERED PROFESSIONAL ENGINEER. ALL WARRANTIES AND REPRESENTATIONS OF ANY KIND ARE DISCLAIMED. ANYONE MAKING USE OF THIS INFORMATION AGREES THAT IT ASSUMES ALL LIABILITY ARISING FROM SUCH USE. NO PART OF THESE STANDARDS SHOULD BE REPRODUCED OR DISTRIBUTED IN ANY FORM OR BY ANY MEANS WITHOUT THE PRIOR WRITTEN PERMISSION OF SCRRRA. ALL RIGHTS RESERVED.	 <b>METROLINK</b> SOUTHERN CALIFORNIA REGIONAL RAIL AUTHORITY ONE GATEWAY PLAZA, 12TH FLOOR, L. A., CA. 90012	ENGINEERING STANDARDS		STANDARD
X	XX-XX-XX	REVISION	XX	XX				SWITCH PLATES FOR HOLLOW STEEL TIES, 136 LB RE RAIL PLATE HTP-206-STR NO SKEW LV BRACE		2800
REV.	DATE	DESCRIPTION	DES.	ENG.	DIRECTOR OF ENGINEERING AND CONSTRUCTION					SCALE: NTS
										REVISION SHEET 1 OF 1
										CADD FILE: ES2800-90



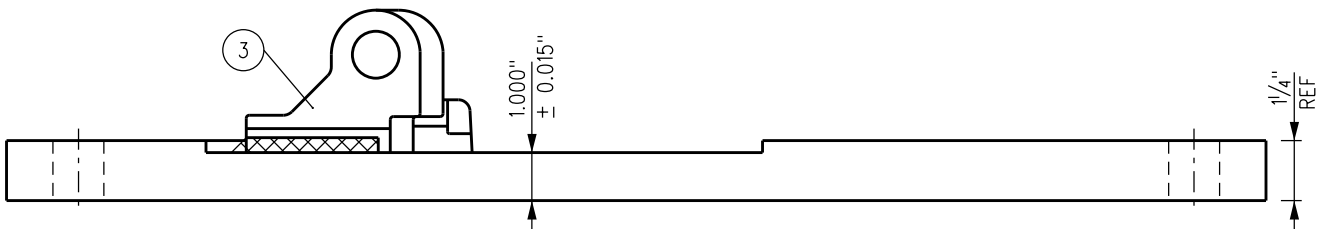
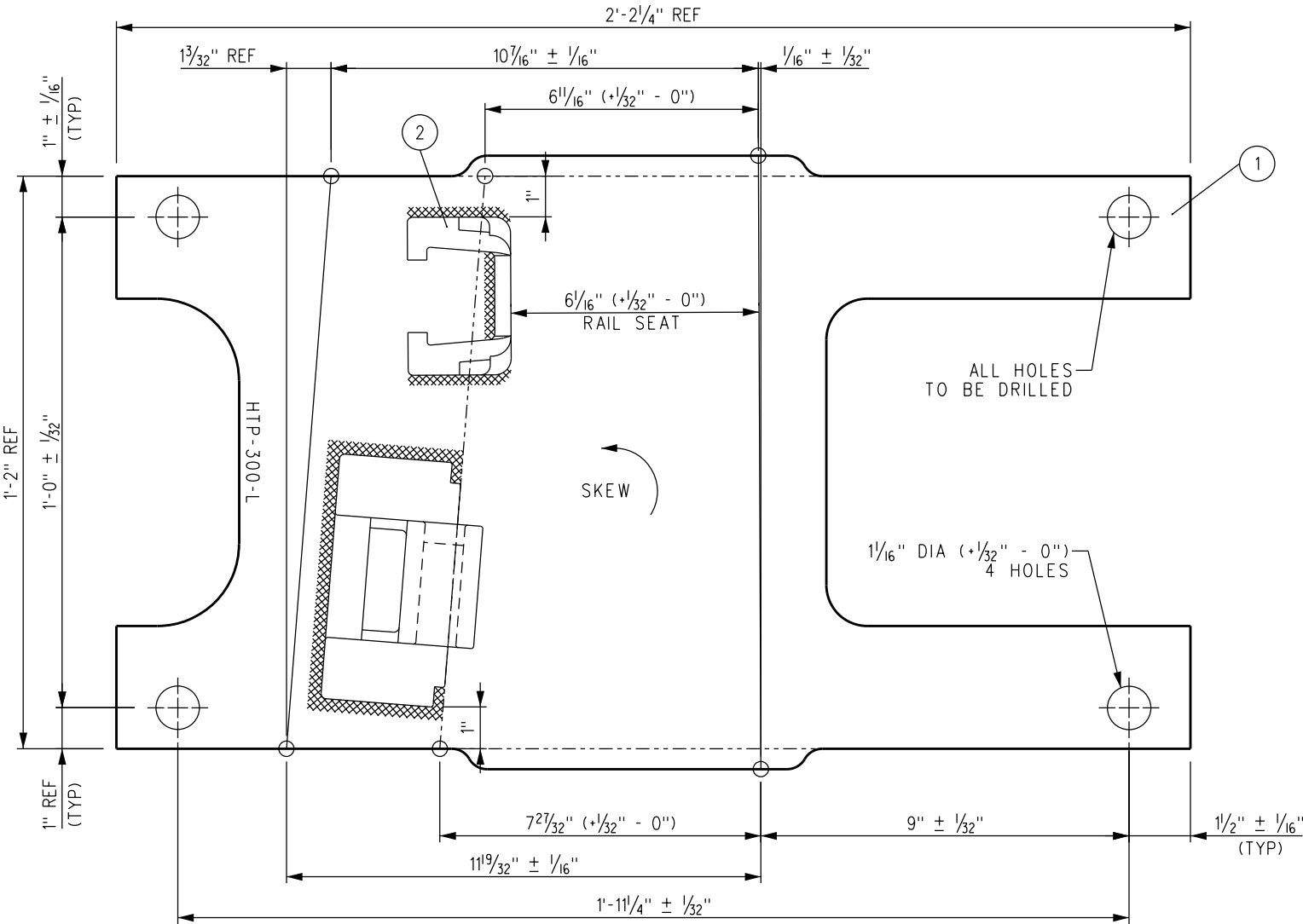
TYPICAL SAFELOK WELD-ON CAST  
SHOULDER WELDING DETAILS

NOTE:

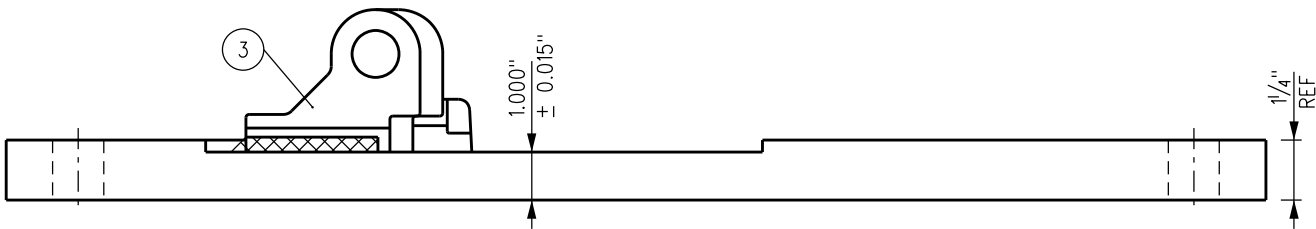
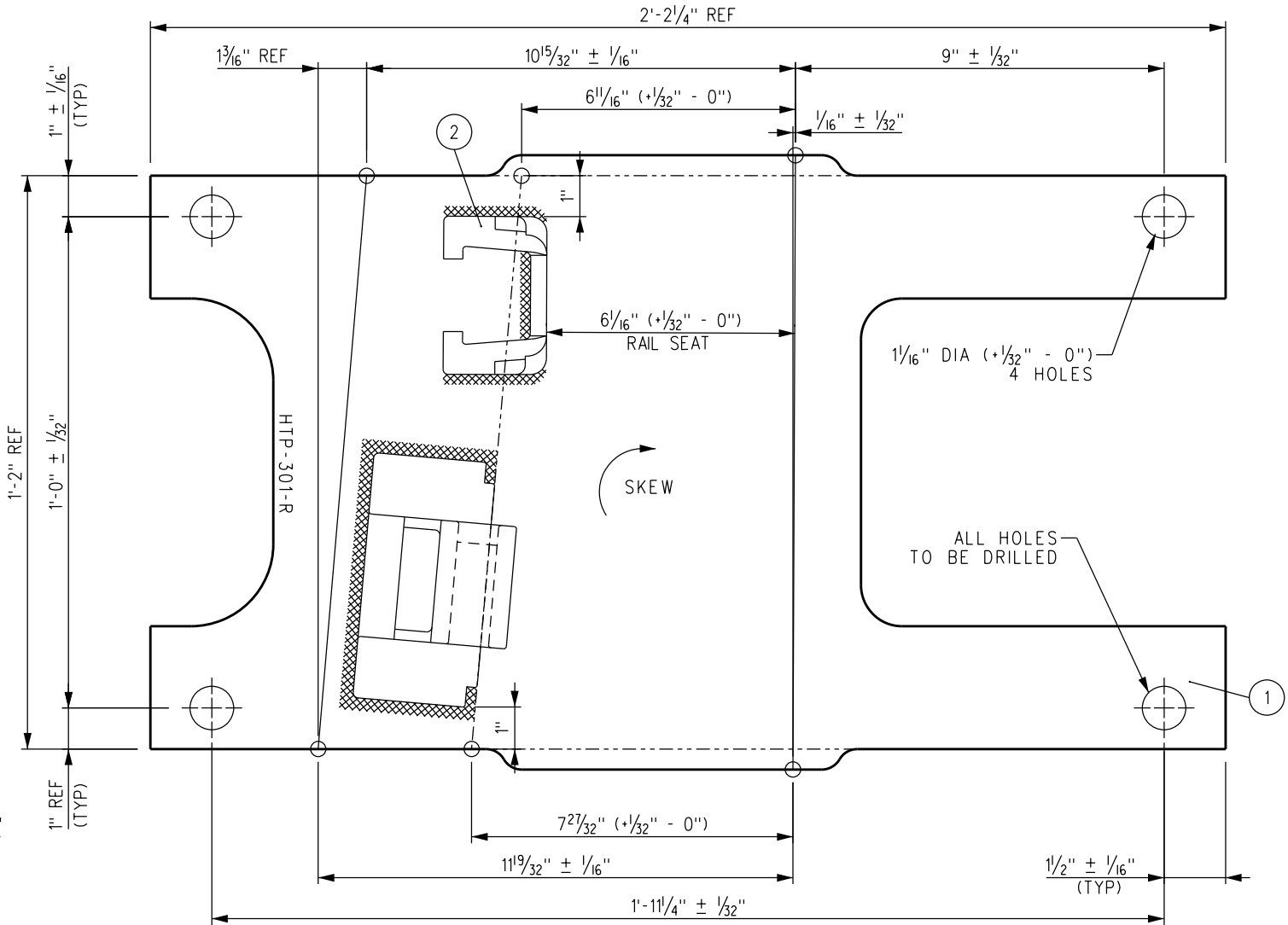
1. I.D. CHARACTERS TO BE 5/8" MINIMUM HEIGHT CLEARLY STAMPED AS SHOWN.
2. SLOTTED HOLE CENTERS ARE INDICATED ON DRAWING.

BILL OF MATERIAL

ITEM	QTY FOR HTP-300-L	QTY FOR HTP-301-R	DESCRIPTION	DWG NO	SCRRRA PART NO
1	1	1	BURNED SWITCH PLATE, 1 1/4" THICK	-	
2	1	1	SAFELOK SHOULDER	-	
3	1	1	LV BRACE RETENTION BLOCK	-	



HTP-300-L



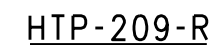
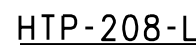
HTP-301-R

				DRAWN BY: HDR DATE: 03/31/2011		SCRRRA ENGINEERING STANDARDS ARE INTENDED FOR SCRRRA APPROVED USES ONLY. FOR NON-SCRRRA APPROVED USES: SCRRRA SHALL NOT BE RESPONSIBLE FOR THE ACCURACY OR COMPLETENESS OF THE DATA OR INFORMATION CONTAINED HEREIN. THE SELECTION AND USE OF THESE STANDARDS IS THE SOLE RESPONSIBILITY OF THE USER AND SHOULD NOT BE USED WITHOUT CONSULTING A REGISTERED PROFESSIONAL ENGINEER. ALL WARRANTIES AND REPRESENTATIONS OF ANY KIND ARE DISCLAIMED. ANYONE MAKING USE OF THIS INFORMATION AGREES THAT IT ASSUMES ALL LIABILITY ARISING FROM SUCH USE. NO PART OF THESE STANDARDS SHOULD BE REPRODUCED OR DISTRIBUTED IN ANY FORM OR BY ANY MEANS WITHOUT THE PRIOR WRITTEN PERMISSION OF SCRRRA. ALL RIGHTS RESERVED.	 <b>METROLINK</b> SOUTHERN CALIFORNIA REGIONAL RAIL AUTHORITY ONE GATEWAY PLAZA, 12TH FLOOR, L. A., CA. 90012	ENGINEERING STANDARDS SWITCH PLATES FOR HOLLOW STEEL TIES, 136 LB RE RAIL PLATES HTP-300-L & HTP-301-R 1/16" SKEW LV BRACE	STANDARD 2800 SCALE: NTS REVISION SHEET 1 OF 1 CADD FILE: ES2800-91
X	XX-XX-XX	REVISION	XX	XX					
REV.	DATE	DESCRIPTION	DES.	ENG.					



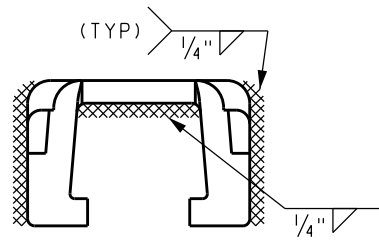
**NOTE:**

1. I.D. CHARACTERS TO BE 5/8" MINIMUM HEIGHT CLEARLY STAMPED AS SHOWN.
2. SLOTTED HOLE CENTERS ARE INDICATED ON DRAWING.



UserName-> carlosa	Date Plotted: 10/5/2011 2:35:00 PM	Plot Driver-> S:\Plot Drivers\pdf.plt	FileName-> s:\V8EngStds\2000\Turnouts\Common Standards\ES2800-92.dgn
--------------------	------------------------------------	---------------------------------------	--





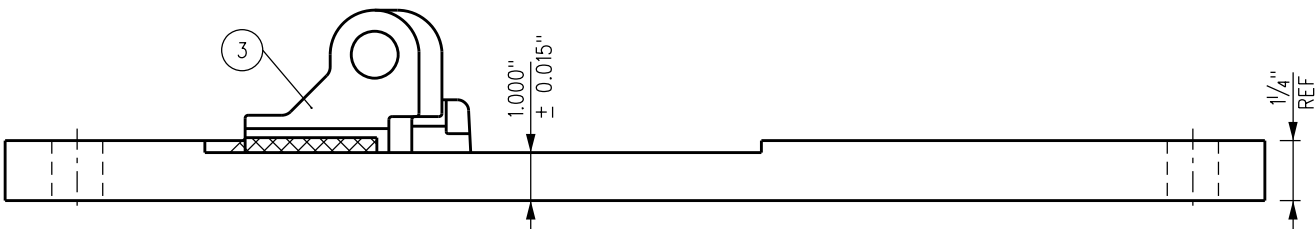
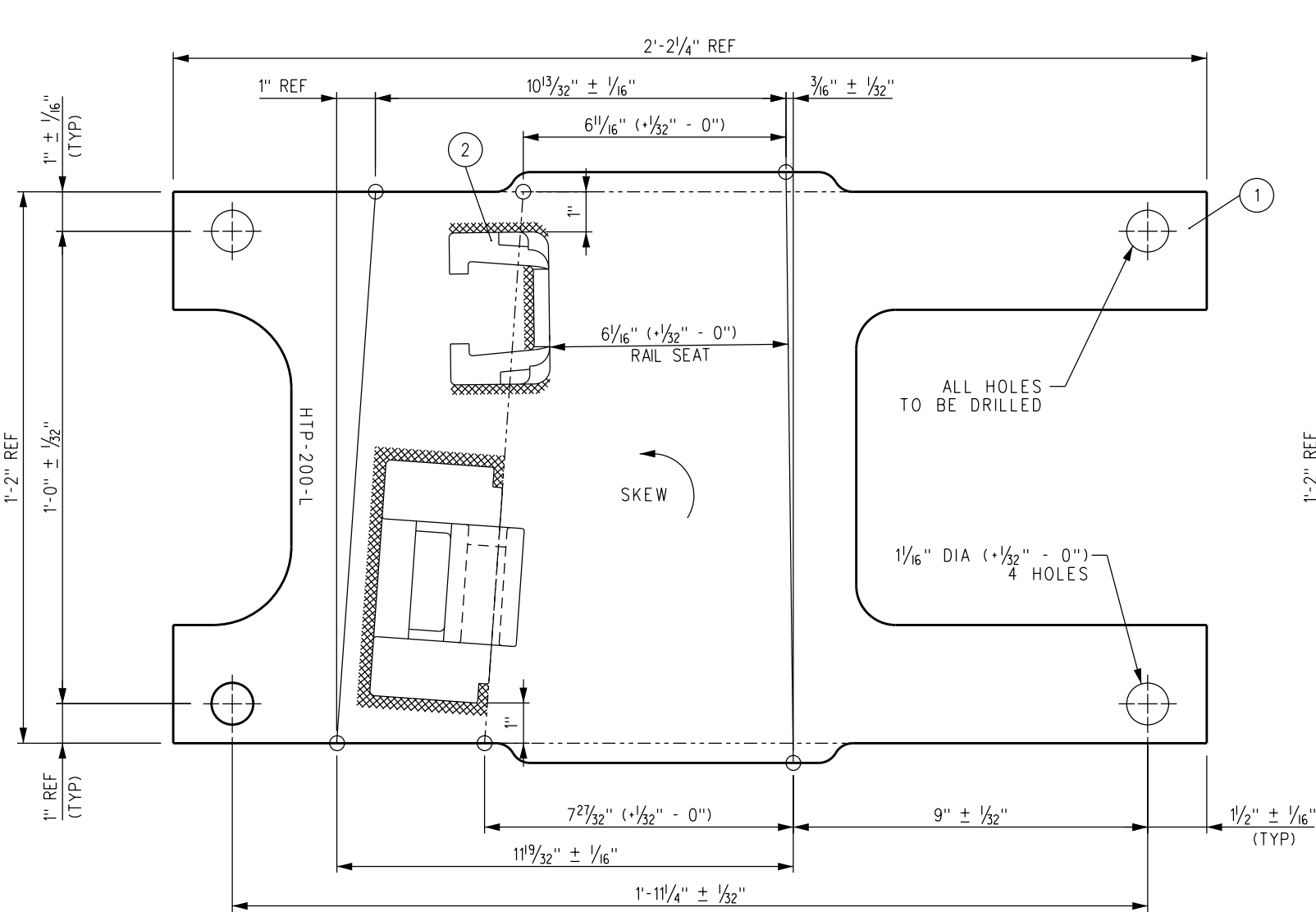
TYPICAL SAFELOK WELD-ON CAST  
SHOULDER WELDING DETAILS

NOTE:

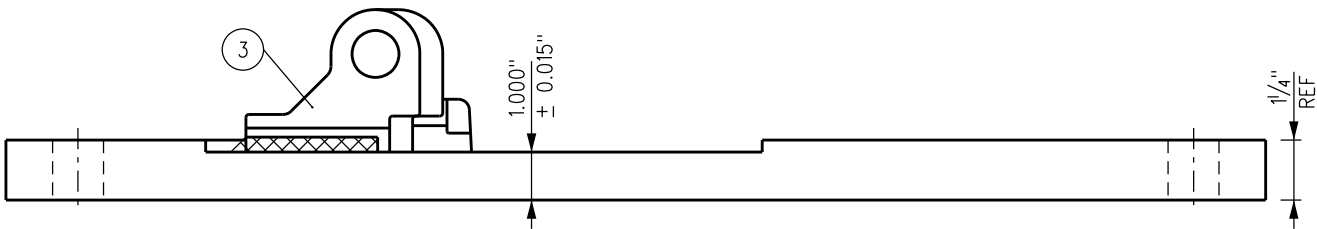
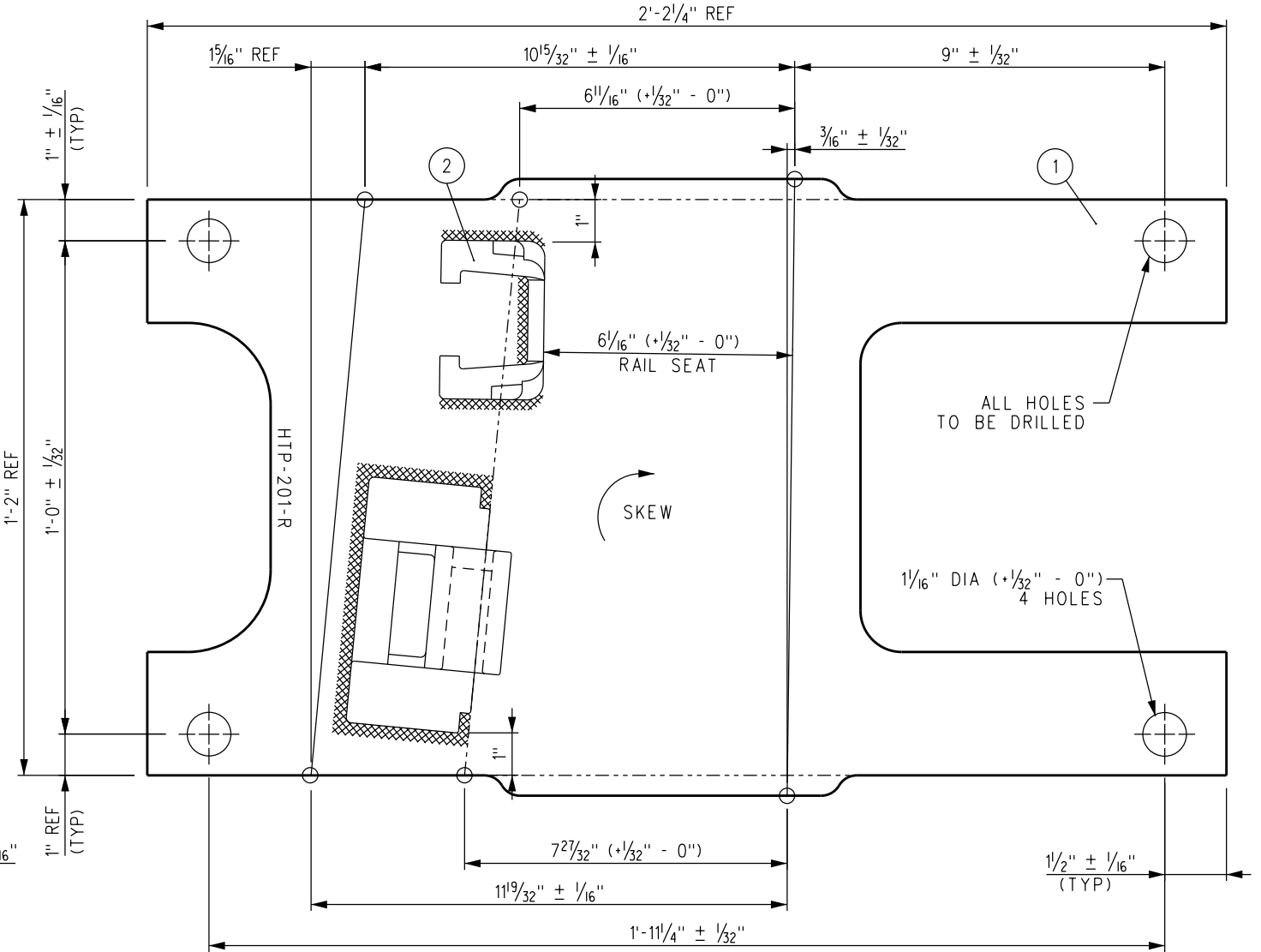
1. I.D. CHARACTERS TO BE 5/8" MINIMUM HEIGHT CLEARLY STAMPED AS SHOWN.
2. SLOTTED HOLE CENTERS ARE INDICATED ON DRAWING.

BILL OF MATERIAL

ITEM	QTY FOR HTP-200-L	QTY FOR HTP-201-R	DESCRIPTION	DWG NO	SCRR PART NO
1	1	1	BURNED SWITCH PLATE, 1 1/4" THICK	-	
2	1	1	SAFELOK SHOULDER	-	
3	1	1	LV BRACE RETENTION BLOCK	-	

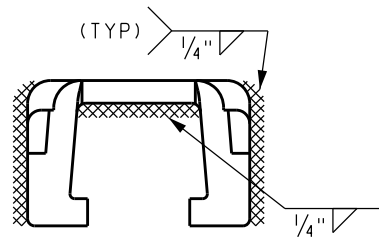


HTP-200-L



HTP-201-R

				DRAWN BY: HDR DATE: 03/31/2011		SCRR ENGINEERING STANDARDS ARE INTENDED FOR SCRR APPROVED USES ONLY. FOR NON-SCRR APPROVED USES, SCRR SHALL NOT BE RESPONSIBLE FOR THE ACCURACY OR COMPLETENESS OF THE DATA OR INFORMATION CONTAINED HEREIN. THE SELECTION AND USE OF THESE STANDARDS IS THE SOLE RESPONSIBILITY OF THE USER AND SHOULD NOT BE USED WITHOUT CONSULTING A REGISTERED PROFESSIONAL ENGINEER. ALL WARRANTIES AND REPRESENTATIONS OF ANY KIND ARE DISCLAIMED. ANYONE MAKING USE OF THIS INFORMATION AGREES THAT IT ASSUMES ALL LIABILITY ARISING FROM SUCH USE. NO PART OF THESE STANDARDS SHOULD BE REPRODUCED OR DISTRIBUTED IN ANY FORM OR BY ANY MEANS WITHOUT THE PRIOR WRITTEN PERMISSION OF SCRR. ALL RIGHTS RESERVED.	 <b>METROLINK</b> SOUTHERN CALIFORNIA REGIONAL RAIL AUTHORITY ONE GATEWAY PLAZA, 12TH FLOOR, L. A., CA. 90012	ENGINEERING STANDARDS SWITCH PLATES FOR HOLLOW STEEL TIES, 136 LB RE RAIL PLATES HTP-200-L AND HTP-201-R 3/16" SKEW LV BRACE	STANDARD 2800 SCALE: NTS REVISION SHEET 1 OF 1 CADD FILE: ES2800-93
X	XX-XX-XX	REVISION	XX	XX					
REV.	DATE	DESCRIPTION	DES.	ENG.					



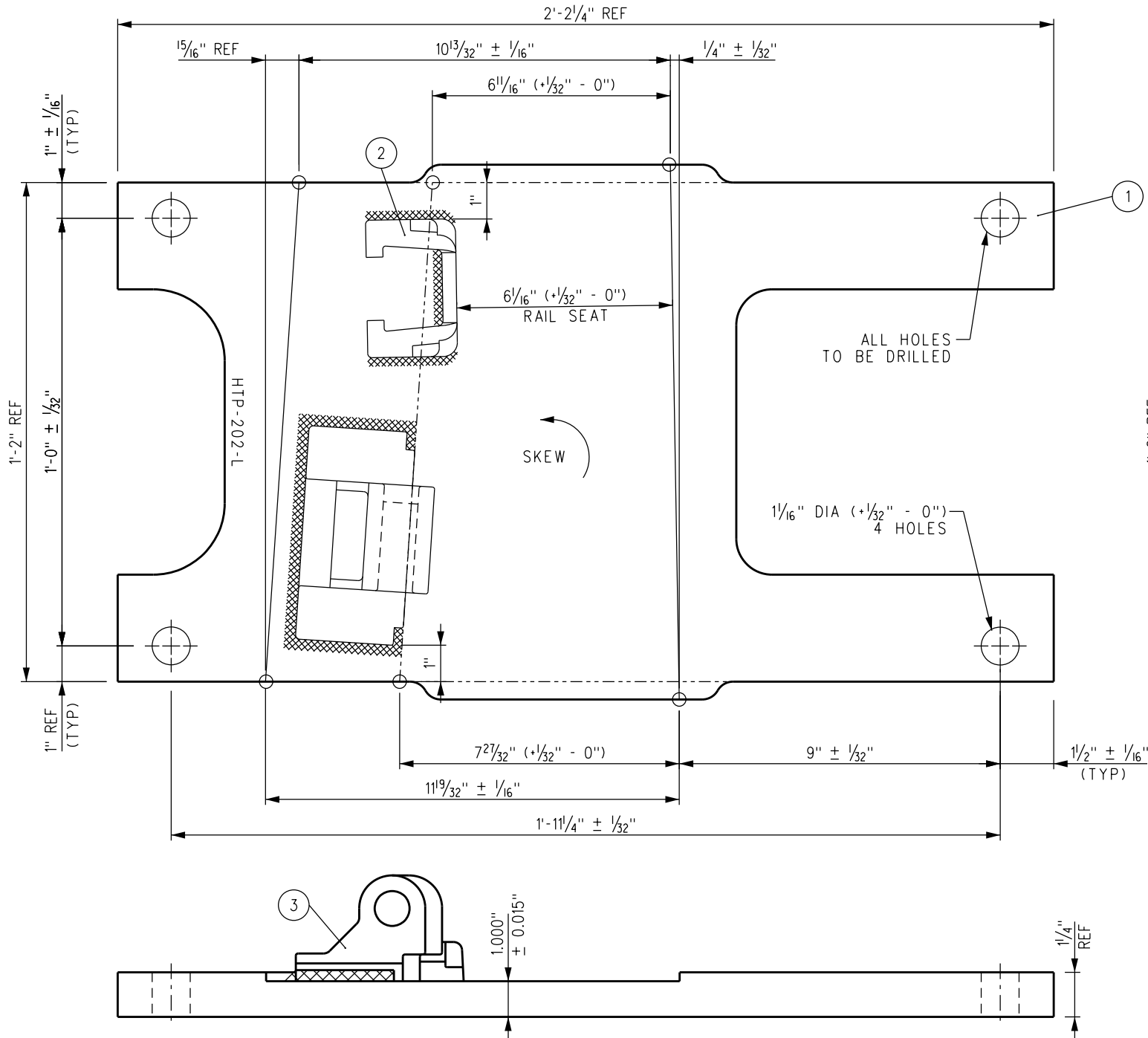
TYPICAL SAFELOK WELD-ON CAST  
SHOULDER WELDING DETAILS

NOTE:

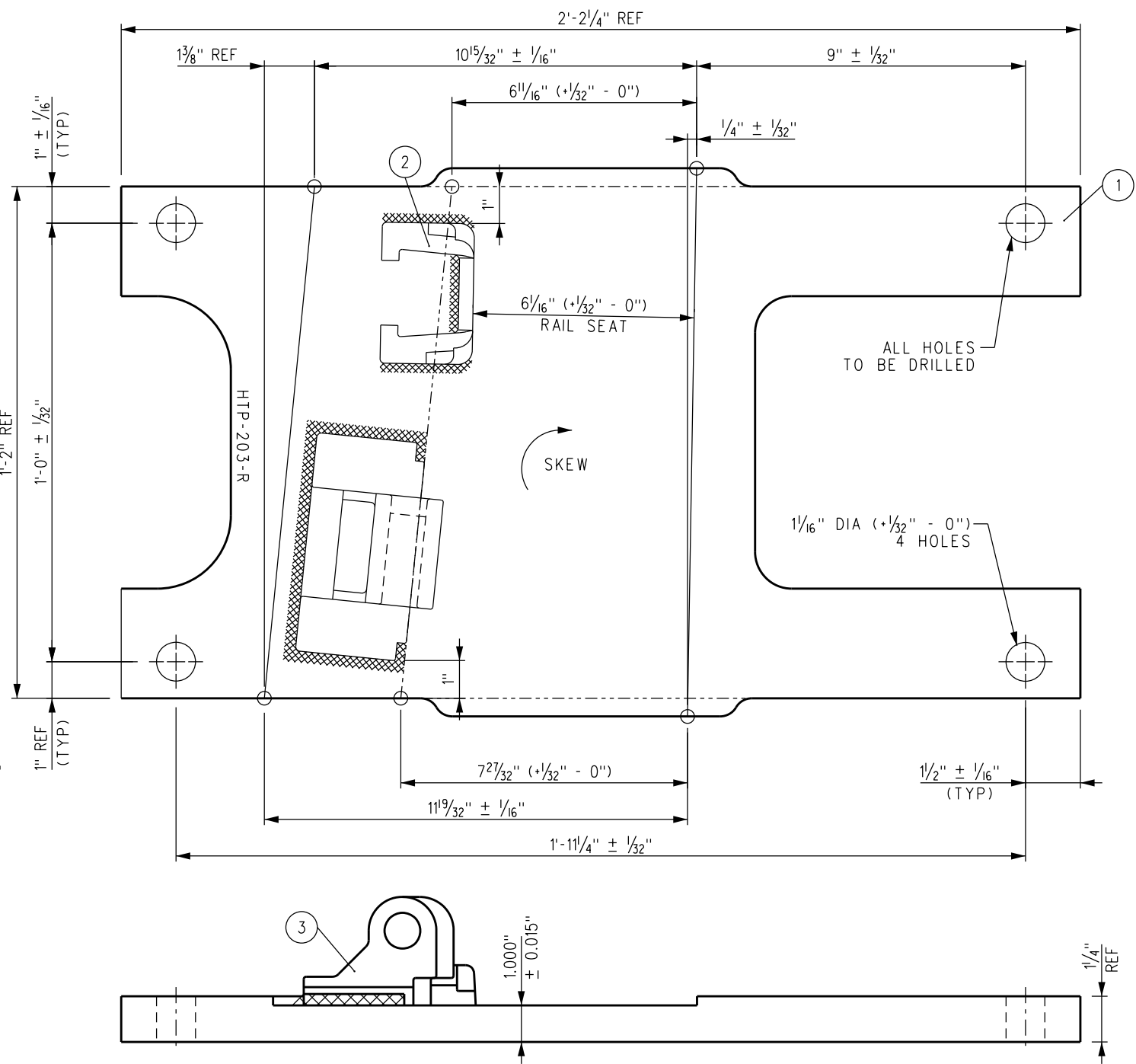
1. I.D. CHARACTERS TO BE 5/8" MINIMUM HEIGHT CLEARLY STAMPED AS SHOWN.
2. SLOTTED HOLE CENTERS ARE INDICATED ON DRAWING.

BILL OF MATERIAL

ITEM	QTY FOR HTP-202-L	QTY FOR HTP-203-R	DESCRIPTION	DWG NO	SCRR PART NO
1	1	1	BURNED SWITCH PLATE, 1 1/4" THICK	-	
2	1	1	SAFELOK SHOULDER	-	
3	1	1	LV BRACE RETENTION BLOCK	-	

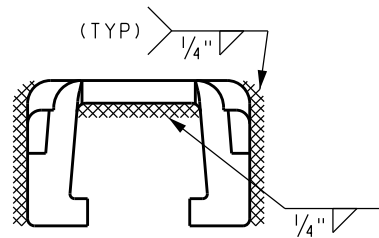


HTP-202-L



HTP-203-R

				DRAWN BY: HDR DATE: 03/31/2011		SCRR ENGINEERING STANDARDS ARE INTENDED FOR SCRR APPROVED USES ONLY. FOR NON-SCRR APPROVED USES: SCRR SHALL NOT BE RESPONSIBLE FOR THE ACCURACY OR COMPLETENESS OF THE DATA OR INFORMATION CONTAINED HEREIN. THE SELECTION AND USE OF THESE STANDARDS IS THE SOLE RESPONSIBILITY OF THE USER AND SHOULD NOT BE USED WITHOUT CONSULTING A REGISTERED PROFESSIONAL ENGINEER. ALL WARRANTIES AND REPRESENTATIONS OF ANY KIND ARE DISCLAIMED. ANYONE MAKING USE OF THIS INFORMATION AGREES THAT IT ASSUMES ALL LIABILITY ARISING FROM SUCH USE. NO PART OF THESE STANDARDS SHOULD BE REPRODUCED OR DISTRIBUTED IN ANY FORM OR BY ANY MEANS WITHOUT THE PRIOR WRITTEN PERMISSION OF SCRR. ALL RIGHTS RESERVED.	 <b>METROLINK</b> SOUTHERN CALIFORNIA REGIONAL RAIL AUTHORITY ONE GATEWAY PLAZA, 12TH FLOOR, L. A., CA. 90012	ENGINEERING STANDARDS SWITCH PLATES FOR HOLLOW STEEL TIES, 136 LB RE RAIL PLATES HTP-202-L AND HTP-203-R 1/4" SKEW LV BRACE	STANDARD 2800 SCALE: NTS REVISION SHEET 1 OF 1 CADD FILE: ES2800-94
X	XX-XX-XX	REVISION	XX	XX					
REV.	DATE	DESCRIPTION	DES.	ENG.					



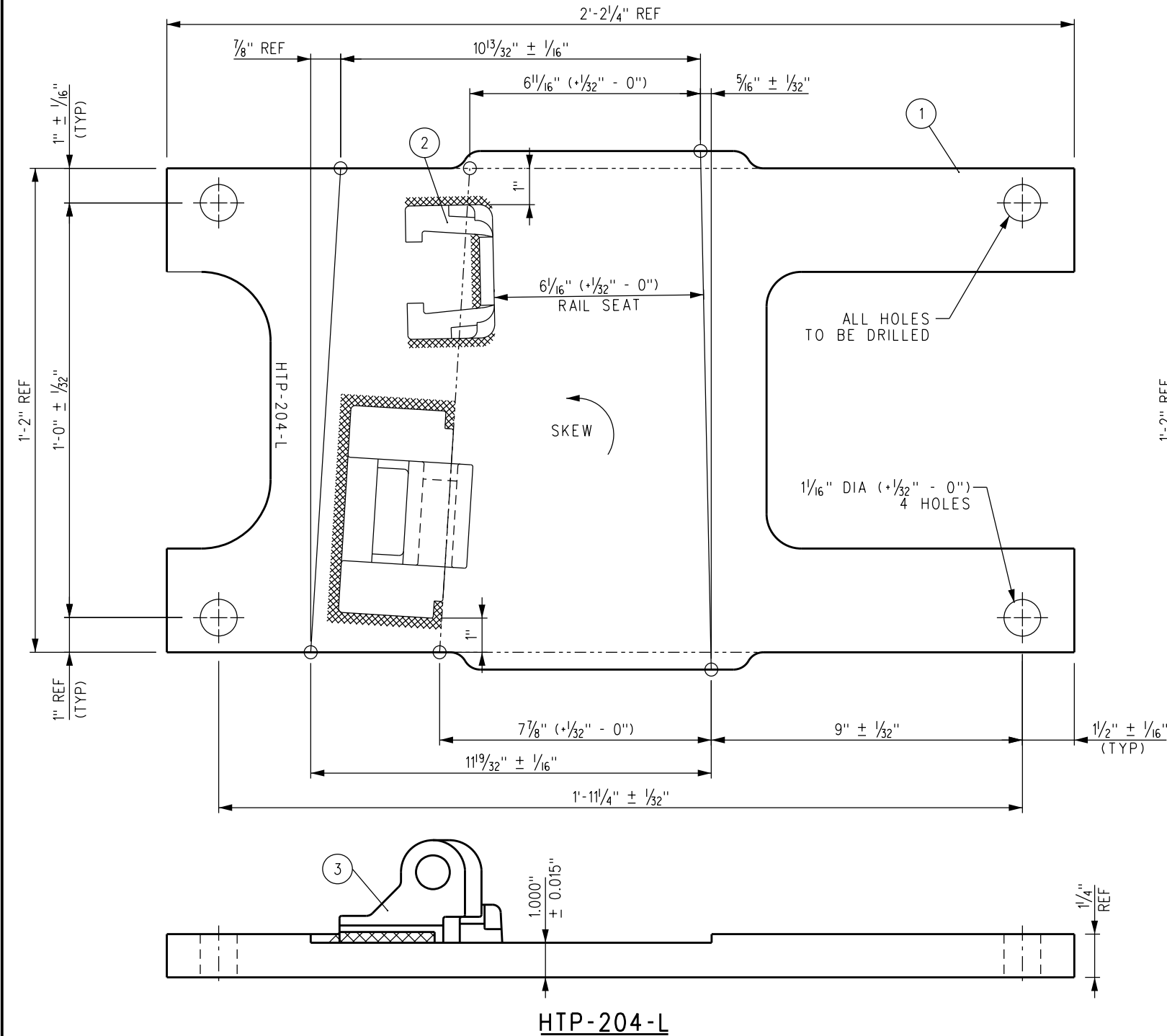
TYPICAL SAFELOK WELD-ON CAST  
SHOULDER WELDING DETAILS

NOTE:

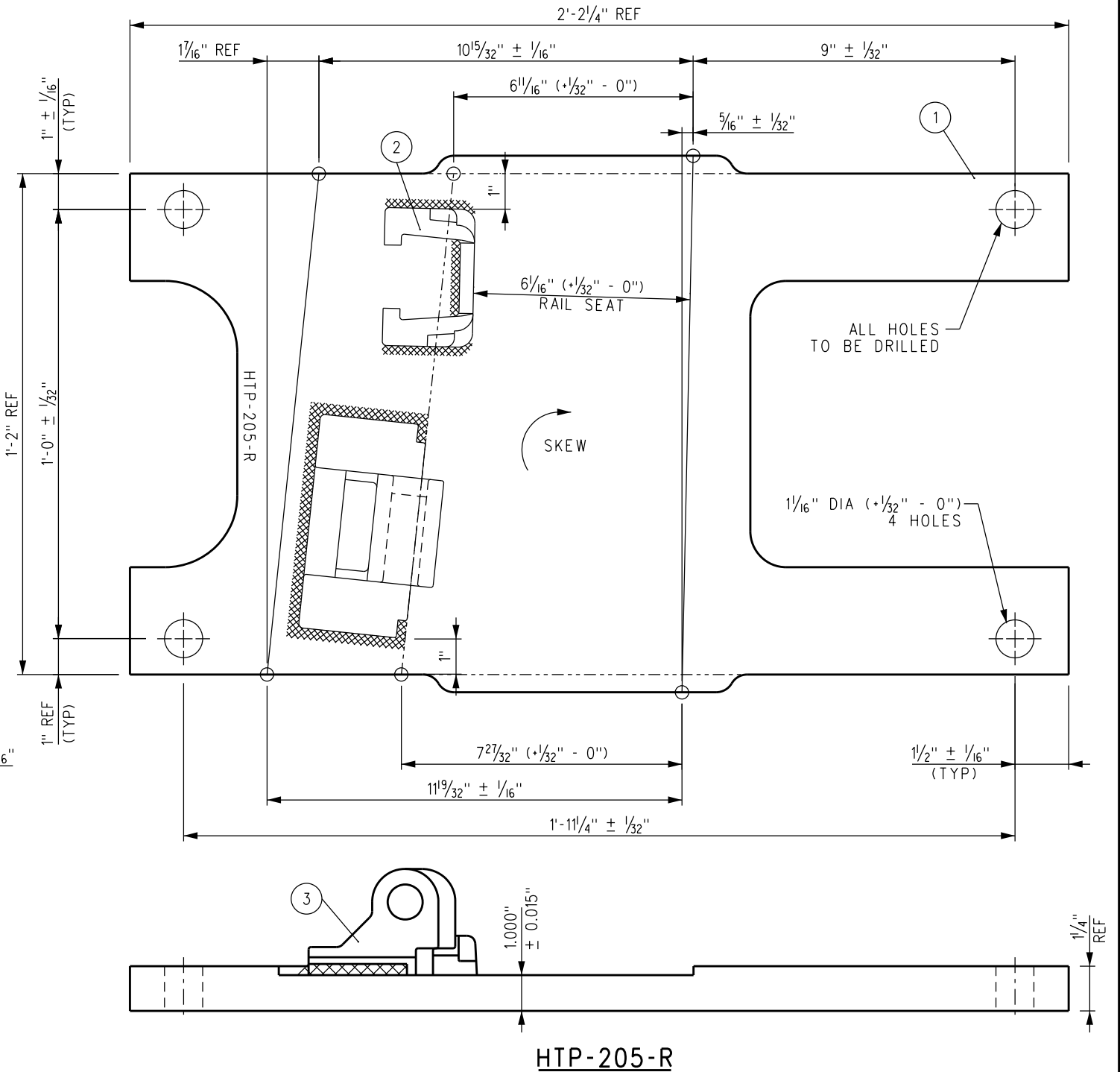
1. I.D. CHARACTERS TO BE 5/8" MINIMUM HEIGHT CLEARLY STAMPED AS SHOWN.
2. SLOTTED HOLE CENTERS ARE INDICATED ON DRAWING.

BILL OF MATERIAL

ITEM	QTY FOR HTP-204-L	QTY FOR HTP-205-R	DESCRIPTION	DWG NO	SCRR PART NO
1	1	1	BURNED SWITCH PLATE, 1 1/4" THICK	-	
2	1	1	SAFELOK SHOULDER	-	
3	1	1	LV BRACE RETENTION BLOCK	-	



HTP-204-L

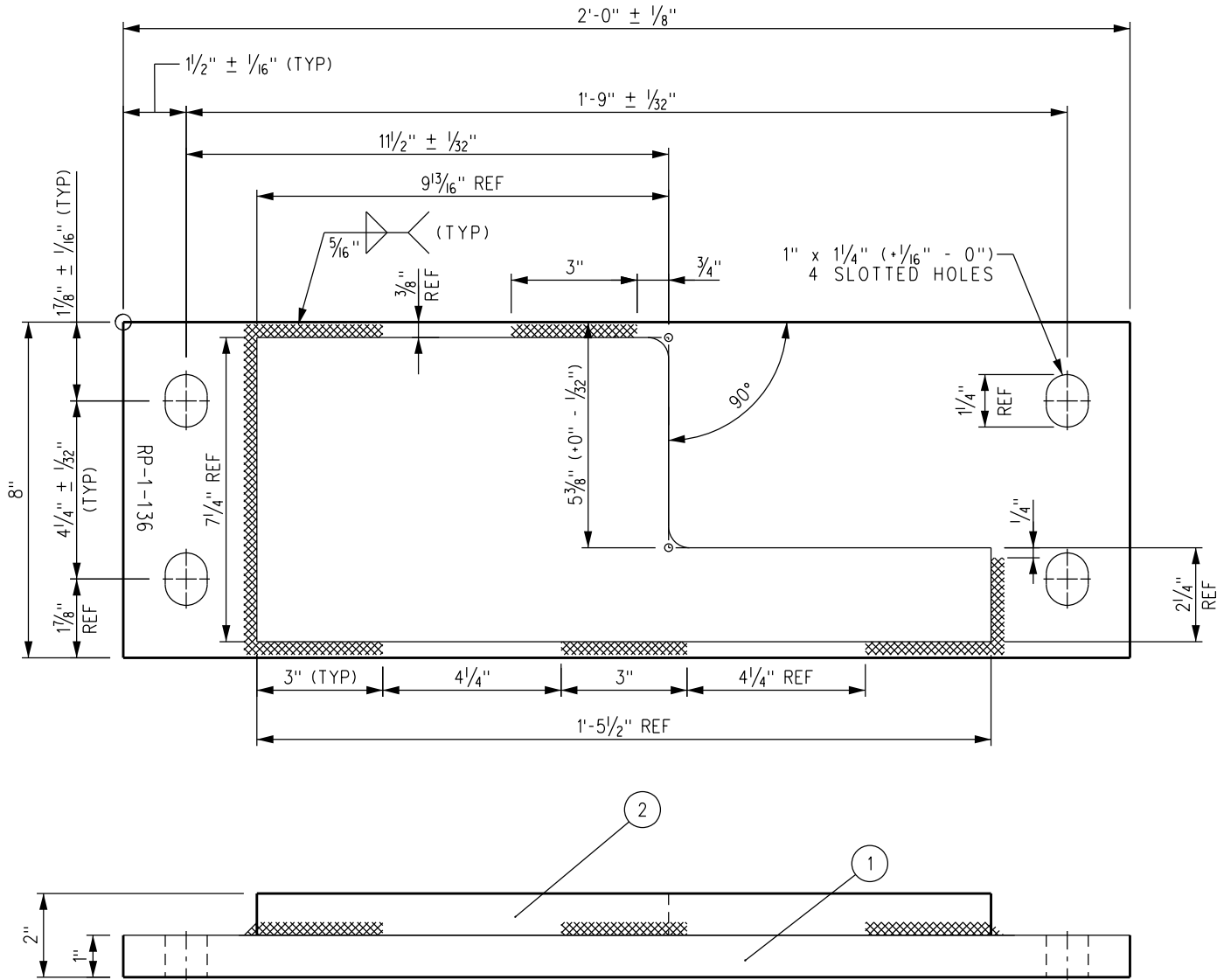


HTP-205-R

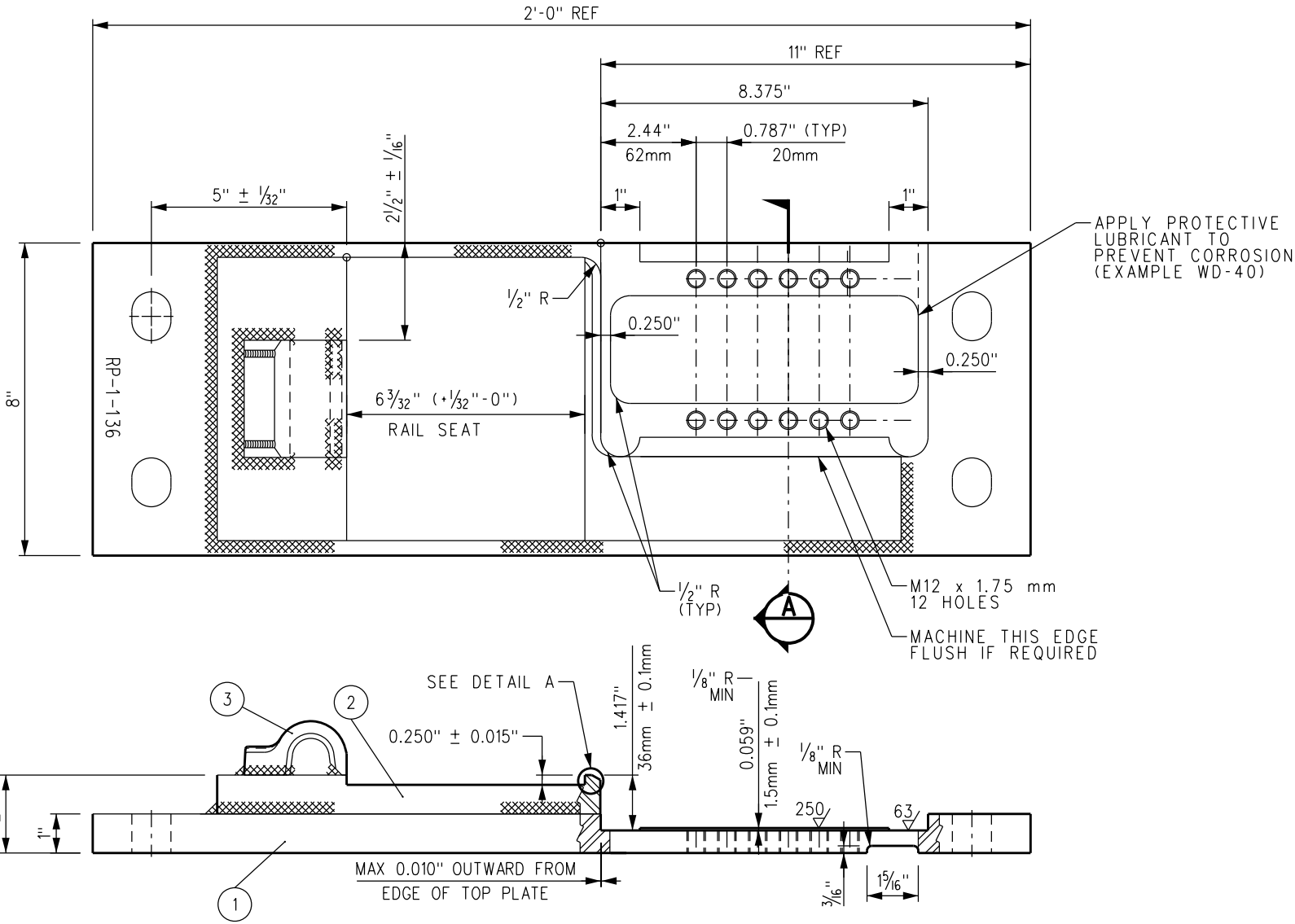
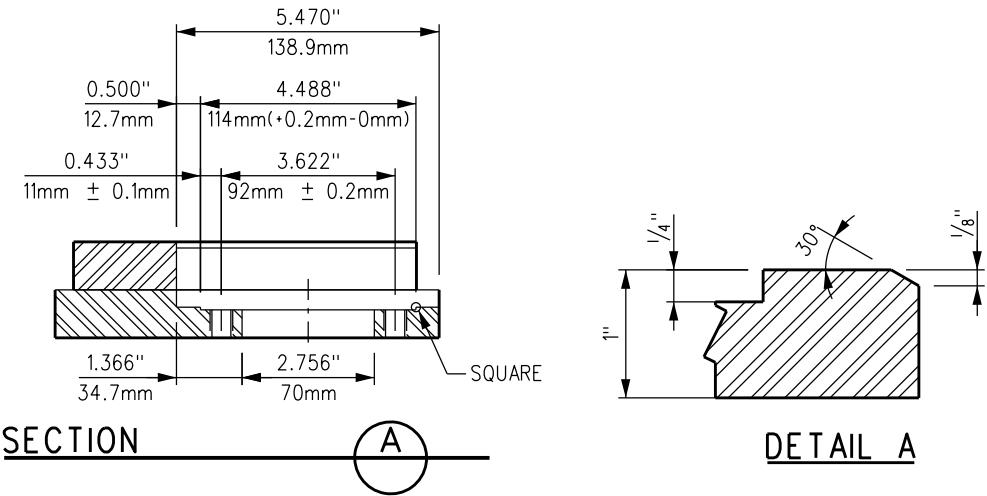
				DRAWN BY: HDR DATE: 03/31/2011		SCRR ENGINEERING STANDARDS ARE INTENDED FOR SCRR APPROVED USES ONLY. FOR NON-SCRR APPROVED USES: SCRR SHALL NOT BE RESPONSIBLE FOR THE ACCURACY OR COMPLETENESS OF THE DATA OR INFORMATION CONTAINED HEREIN. THE SELECTION AND USE OF THESE STANDARDS IS THE SOLE RESPONSIBILITY OF THE USER AND SHOULD NOT BE USED WITHOUT CONSULTING A REGISTERED PROFESSIONAL ENGINEER. ALL WARRANTIES AND REPRESENTATIONS OF ANY KIND ARE DISCLAIMED. ANYONE MAKING USE OF THIS INFORMATION AGREES THAT IT ASSUMES ALL LIABILITY ARISING FROM SUCH USE. NO PART OF THESE STANDARDS SHOULD BE REPRODUCED OR DISTRIBUTED IN ANY FORM OR BY ANY MEANS WITHOUT THE PRIOR WRITTEN PERMISSION OF SCRR. ALL RIGHTS RESERVED.	 <b>METROLINK</b> SOUTHERN CALIFORNIA REGIONAL RAIL AUTHORITY ONE GATEWAY PLAZA, 12TH FLOOR, L. A., CA. 90012	ENGINEERING STANDARDS SWITCH PLATES FOR HOLLOW STEEL TIES, 136 LB RE RAIL PLATES HTP-204-L AND HTP-205-R 516" SKEW LV BRACE	STANDARD 2800 SCALE: NTS REVISION SHEET 1 OF 1 CADD FILE: ES2800-95
X	XX-XX-XX	REVISION	XX	XX					
REV.	DATE	DESCRIPTION	DES.	ENG.					

BILL OF MATERIALS	
ITEM	DESCRIPTION
1	FLAT BAR, ASTM A36, 1" x 8" x 2'-0" LONG
2	BURNED SWITCH POINT RISER PLATE FOR RP-1-136
3	SHOULDER, FORGED, TYPE 5, ANTI-OVERDRIVE

- NOTES:**
1. I.D. CHARACTERS TO BE 1/2" MINIMUM HEIGHT, STAMPED CLEARLY AS SHOWN.
  2. USE IMPERIAL DIMENSIONS WITH THE EXCEPTION OF TOLERANCED METRIC DIMENSIONS AND THREADED HOLES.
  3. SURFACE ROUGHNESS 250 AND 63 MICROINCH ARE EQUIVALENT TO N9 AND N7 AND SHOULD TRAVERSE THE ENTIRE MACHINED SURFACE.
  4. SLOTTED HOLE CENTERS ARE INDICATED ON DRAWING.
  5. DEBUR ALL THREADED HOLES



SWITCH ROLLER PLATE RP-1-136  
W/O ROLLER WELDING & PUNCHING DETAILS

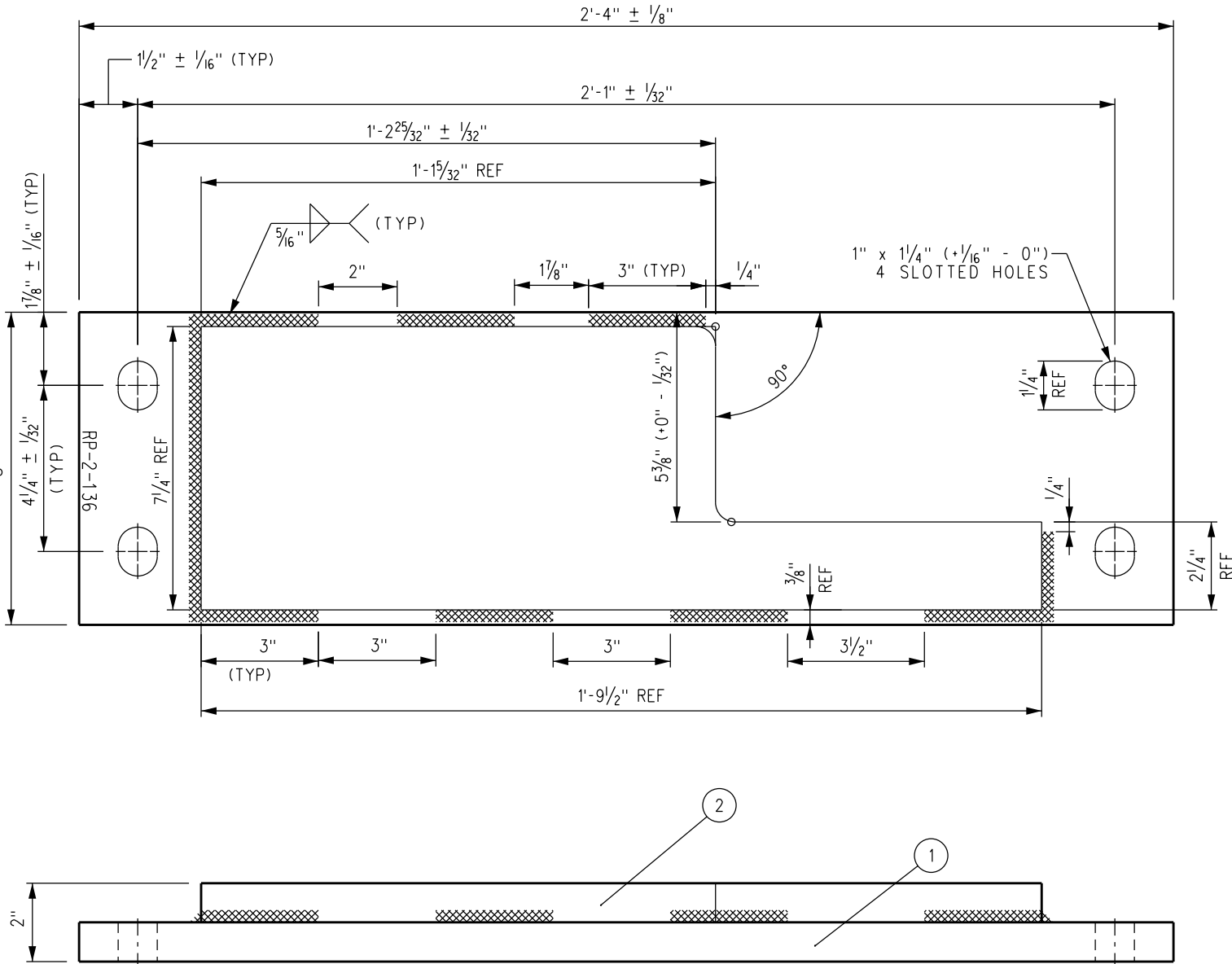


SWITCH ROLLER PLATE RP-1-136  
W/O ROLLER MACHINING DETAILS

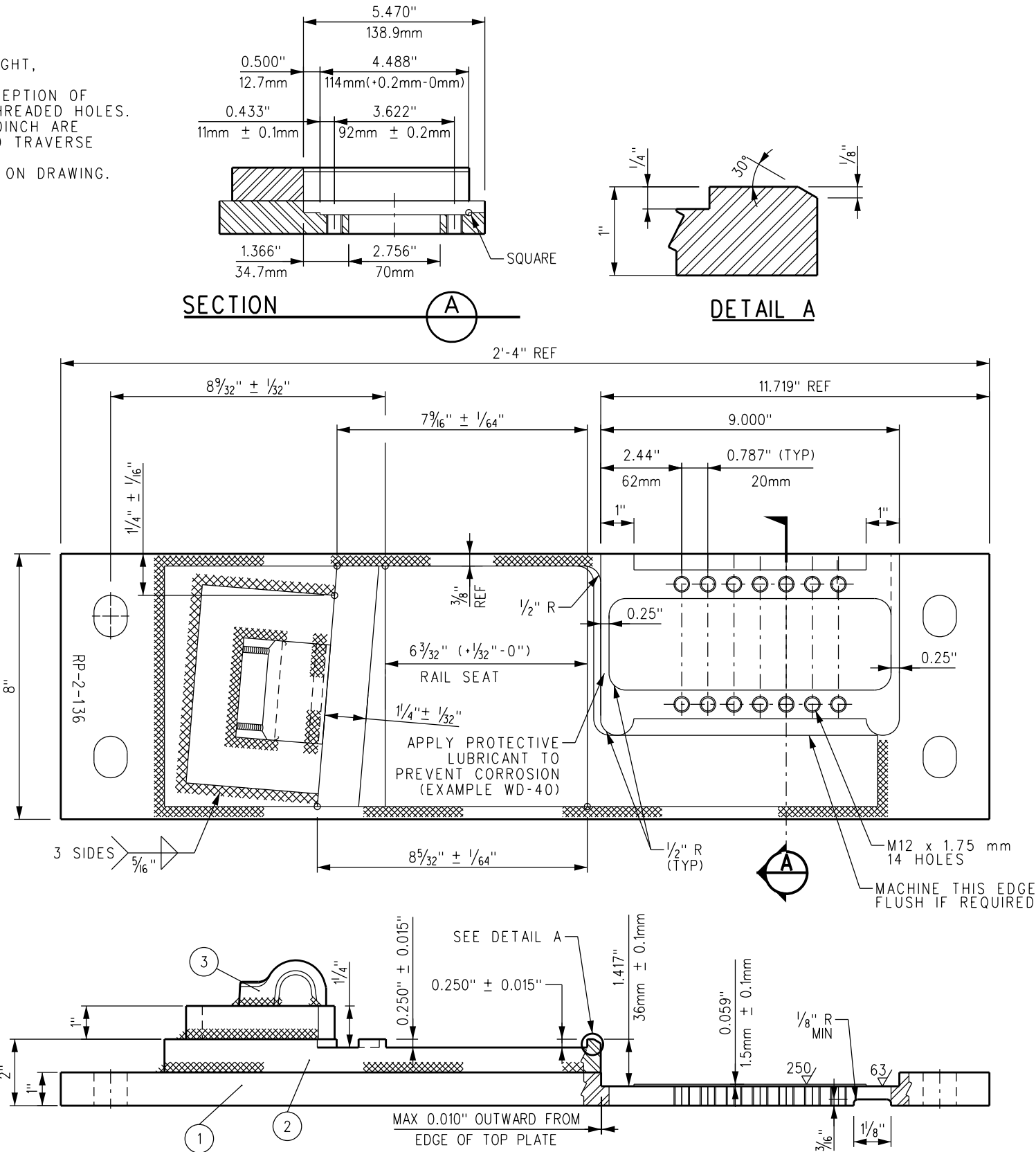
--	--	--	--	--	--	--	--	--	--	--	--	--	--	--	--	--	--	--	--	--	--	--	--	--	--	--	--	--	--	--	--	--	--	--	--	--	--	--	--	--	--	--	--	--	--	--	--	--	--	--	--	--	--	--	--	--	--	--	--	--	--	--	--	--	--	--	--	--	--	--	--	--	--	--	--	--	--	--	--	--	--	--	--	--	--	--	--	--	--	--	--	--	--	--	--	--	--	--	--	--	--	--	--	--	--	--	--	--	--	--	--	--	--	--	--	--	--	--	--	--	--	--	--	--	--	--	--	--	--	--	--	--	--	--	--	--	--	--	--	--	--	--	--	--	--	--	--	--	--	--	--	--	--	--	--	--	--	--	--	--	--	--	--	--	--	--	--	--	--	--	--	--	--	--	--	--	--	--	--	--	--	--	--	--	--	--	--	--	--	--	--	--	--	--	--	--	--	--	--	--	--	--	--	--	--	--	--	--	--	--	--	--	--	--	--	--	--	--	--	--	--	--	--	--	--	--	--	--	--	--	--	--	--	--	--	--	--	--	--	--	--	--	--	--	--	--	--	--	--	--	--	--	--	--	--	--	--	--	--	--	--	--	--	--	--	--	--	--	--	--	--	--	--	--	--	--	--	--	--	--	--	--	--	--	--	--	--	--	--	--	--	--	--	--	--	--	--	--	--	--	--	--	--	--	--	--	--	--	--	--	--	--	--	--	--	--	--	--	--	--	--	--	--	--	--	--	--	--	--	--	--	--	--	--	--	--	--	--	--	--	--	--	--	--	--	--	--	--	--	--	--	--	--	--	--	--	--	--	--	--	--	--	--	--	--	--	--	--	--	--	--	--	--	--	--	--	--	--	--	--	--	--	--	--	--	--	--	--	--	--	--	--	--	--	--	--	--	--	--	--	--	--	--	--	--	--	--	--	--	--	--	--	--	--	--	--	--	--	--	--	--	--	--	--	--	--	--	--	--	--	--	--	--	--	--	--	--	--	--	--	--	--	--	--	--	--	--	--	--	--	--	--	--	--	--	--	--	--	--	--	--	--	--	--	--	--	--	--	--	--	--	--	--	--	--	--	--	--	--	--	--	--	--	--	--	--	--	--	--	--	--	--	--	--	--	--	--	--	--	--	--	--	--	--	--	--	--	--	--	--	--	--	--	--	--	--	--	--	--	--	--	--	--	--	--	--	--	--	--	--	--	--	--	--	--	--	--	--	--	--	--	--	--	--	--	--	--	--	--	--	--	--	--	--	--	--	--	--	--	--	--	--	--	--	--	--	--	--	--	--	--	--	--	--	--	--	--	--	--	--	--	--	--	--	--	--	--	--	--	--	--	--	--	--	--	--	--	--	--	--	--	--	--	--	--	--	--	--	--	--	--	--	--	--	--	--	--	--	--	--	--	--	--	--	--	--	--	--	--	--	--	--	--	--	--	--	--	--	--	--	--	--	--	--	--	--	--	--	--	--	--	--	--	--	--	--	--	--	--	--	--	--	--	--	--	--	--	--	--	--	--	--	--	--	--	--	--	--	--	--	--	--	--	--	--	--	--	--	--	--	--	--	--	--	--	--	--	--	--	--	--	--	--	--	--	--	--	--	--	--	--	--	--	--	--	--	--	--	--	--	--	--	--	--	--	--	--	--	--	--	--	--	--	--	--	--	--	--	--	--	--	--	--	--	--	--	--	--	--	--	--	--	--	--	--	--	--	--	--	--	--	--	--	--	--	--	--	--	--	--	--	--	--	--	--	--	--	--	--	--	--	--	--	--	--	--	--	--	--	--	--	--	--	--	--	--	--	--	--	--	--	--	--	--	--	--	--	--	--	--	--	--	--	--	--	--	--	--	--	--	--	--	--	--	--	--	--	--	--	--	--	--	--	--	--	--	--	--	--	--	--	--	--	--	--	--	--	--	--	--	--	--	--	--	--	--	--	--	--	--	--	--	--	--	--	--	--	--	--	--	--	--	--	--	--	--	--	--	--	--	--	--	--	--	--	--	--	--	--	--	--	--	--	--	--	--	--	--	--	--	--	--	--	--	--	--	--	--	--	--	--	--	--	--	--	--	--	--	--	--	--	--	--	--	--	--	--	--	--	--	--	--	--	--	--	--	--	--	--	--	--	--	--	--	--	--	--	--	--	--	--	--	--	--	--	--	--	--	--	--	--	--	--	--	--	--	--	--	--	--	--	--	--	--	--	--	--	--	--	--	--	--	--	--	--	--	--	--	--	--	--	--	--	--	--	--	--	--	--	--	--	--	--	--	--	--	--	--	--	--	--	--	--	--	--	--	--	--	--	--	--	--	--	--	--	--	--	--	--	--	--	--	--	--	--	--	--	--	--	--	--	--	--	--	--	--	--	--	--	--	--	--	--	--	--	--	--	--	--	--	--	--	--	--	--	--	--	--	--	--	--	--	--	--	--	--	--	--	--	--	--	--	--	--	--	--	--	--	--	--	--	--	--	--	--	--	--	--	--	--	--	--	--	--	--	--	--	--	--	--	--	--	--	--	--	--	--	--	--	--	--	--	--	--	--	--	--	--	--	--	--	--	--	--	--	--	--	--	--	--	--	--	--	--	--	--	--	--	--	--	--	--	--	--	--	--	--	--	--	--	--	--	--	--	--	--	--	--	--	--	--	--	--	--	--	--	--	--	--	--	--	--	--	--	--	--	--	--	--	--	--	--	--	--	--	--	--	--	--	--	--	--	--	--	--	--	--	--	--	--	--	--	--	--	--	--	--	--	--	--	--	--	--	--	--	--	--	--	--	--	--	--	--	--	--	--	--	--	--	--	--	--	--	--	--	--	--	--	--	--	--	--	--	--	--	--	--	--	--	--	--	--	--	--	--	--	--	--	--	--	--	--	--	--	--	--	--	--	--	--	--	--	--	--	--	--	--	--	--	--	--	--	--	--	--	--	--	--	--	--	--	--	--	--	--	--	--	--	--	--	--	--	--	--	--	--	--	--	--	--	--	--	--	--	--	--	--	--	--	--	--	--	--	--	--	--	--	--	--	--	--	--	--	--	--	--	--	--	--	--	--	--	--	--	--	--	--	--	--	--	--	--	--	--	--	--	--	--	--	--	--	--	--	--	--	--	--	--	--	--	--	--	--	--	--	--	--	--	--	--	--	--	--	--	--	--	--	--	--	--	--	--	--	--	--	--	--	--	--	--	--	--	--	--	--	--	--	--	--	--	--	--	--	--	--	--	--	--	--	--	--	--	--	--	--	--	--	--	--	--	--	--	--	--	--	--	--	--	--	--	--	--	--	--	--	--	--	--	--	--	--	--	--	--	--	--	--	--	--	--	--	--	--	--	--	--	--	--	--	--	--	--	--	--	--	--	--	--	--	--	--	--	--	--	--	--	--	--	--	--	--	--	--	--	--	--	--	--	--	--	--	--	--	--	--	--	--	--	--	--	--	--	--	--	--	--	--	--	--	--	--	--	--	--	--	--	--	--	--	--	--	--	--	--	--	--	--	--	--	--	--	--	--	--	--	--	--	--

BILL OF MATERIALS	
ITEM	DESCRIPTION
1	FLAT BAR, ASTM A36, 1" x 8" x 2'-4" LONG
2	BURNED SWITCH POINT RISER PLATE FOR RP-2-136
3	SHOULDER, FORGED, TYPE 5, ANTI-OVERDRIVE

- NOTES:**
- I.D. CHARACTERS TO BE 1/2" MINIMUM HEIGHT, STAMPED CLEARLY AS SHOWN.
  - USE IMPERIAL DIMENSIONS WITH THE EXCEPTION OF TOLERANCED METRIC DIMENSIONS AND THREADED HOLES.
  - SURFACE ROUGHNESS 250 AND 63 MICROINCH ARE EQUIVALENT TO N9 AND N7 AND SHOULD TRAVERSE THE ENTIRE MACHINED SURFACE.
  - SLOTTED HOLE CENTERS ARE INDICATED ON DRAWING.
  - DEBUR ALL THREADED HOLES

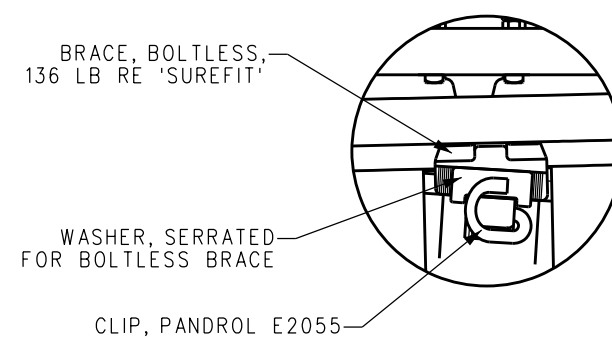


**SWITCH ROLLER PLATE RP-2-136  
W/O ROLLER WELDING & PUNCHING DETAILS**



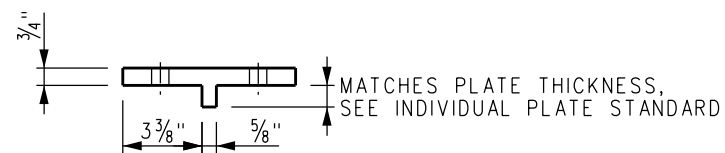
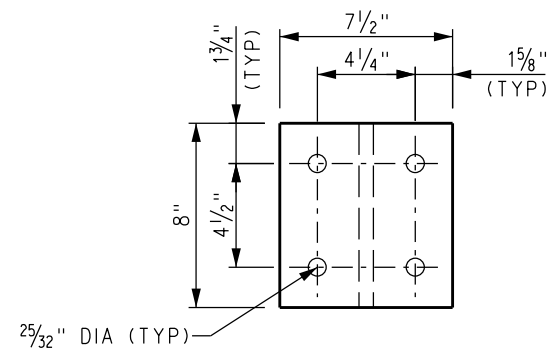
**SWITCH ROLLER PLATE RP-2-136  
W/O ROLLER MACHINING DETAILS**

DRAWN BY: HDR DATE: 03/31/2011				SCRR ENGINEERING STANDARDS ARE INTENDED FOR SCRR APPROVED USES ONLY. FOR NON-SCRR APPROVED USES, SCRR SHALL NOT BE RESPONSIBLE FOR THE ACCURACY OR COMPLETENESS OF THE DATA OR INFORMATION CONTAINED HEREIN. THE SELECTION AND USE OF THESE STANDARDS IS THE SOLE RESPONSIBILITY OF THE USER AND SHOULD NOT BE USED WITHOUT CONSULTING A REGISTERED PROFESSIONAL ENGINEER. ALL WARRANTIES AND REPRESENTATIONS OF ANY KIND ARE DISCLAIMED. ANYONE MAKING USE OF THIS INFORMATION AGREES THAT IT ASSUMES ALL LIABILITY ARISING FROM SUCH USE. NO PART OF THESE STANDARDS SHOULD BE REPRODUCED OR DISTRIBUTED IN ANY FORM OR BY ANY MEANS WITHOUT THE PRIOR WRITTEN PERMISSION OF SCRR. ALL RIGHTS RESERVED.				ENGINEERING STANDARDS				STANDARD
Narek D. Bae				METROLINK				SWITCH PLATE				2800
ASSISTANT DIRECTOR: STANDARDS & DESIGN				SOUTHERN CALIFORNIA REGIONAL RAIL AUTHORITY				ROLLER SCHWIVAG RP-2-136				SCALE: NTS
Wilton Davis				ONE GATEWAY PLAZA, 12TH FLOOR, L. A., CA. 90012				1 OF 1				REVISION SHEET
DIRECTOR OF ENGINEERING AND CONSTRUCTION								ES2800-97				CADD FILE:



### FORGED SHOULDER WELDING DETAIL

### TYPICAL BOLTLESS BRACE ASSEMBLY



GAGE PLATE  
INSULATED JOINT ASSEMBLY  
GPI-77

### DETAIL OF INSULATION BLOCK

POLYESTER COATED STEEL CORE  
WITH BUSHINGS, PORTEC NO 127-07547-01  
OR FIBERGLASS REINFORCED THERMOSET RESIN.  
PURCHASE PART NO GPI52P05

## INSULATION AT GAGE PLATES

				DRAWN BY: A. CARLOS		DATE: 03/31/2011		SCRRRA ENGINEERING STANDARDS ARE INTENDED FOR SCRRRA APPROVED USES ONLY. FOR NON-SCRRRA APPROVED USES: SCRRRA SHALL NOT BE RESPONSIBLE FOR THE ACCURACY OR COMPLETENESS OF THE DATA OR INFORMATION CONTAINED HEREIN. THE SELECTION AND USE OF THESE STANDARDS IS THE SOLE RESPONSIBILITY OF THE USER AND SHOULD NOT BE USED WITHOUT CONSULTING A REGISTERED PROFESSIONAL ENGINEER. ALL WARRANTIES AND REPRESENTATIONS OF ANY KIND ARE DISCLAIMED. ANYONE MAKING USE OF THIS INFORMATION AGREES THAT LIABILITY ASSUMES ALL LIABILITY ARISING FROM SUCH USE. NO PART OF THESE STANDARDS SHOULD BE REPRODUCED OR DISTRIBUTED IN ANY FORM OR BY ANY MEANS WITHOUT THE PRIOR WRITTEN PERMISSION OF SCRRRA. ALL RIGHTS RESERVED.		 <b>METROLINK®</b>		ENGINEERING STANDARDS		STANDARD 2800	
				 ASSISTANT DIRECTOR: STANDARDS & DESIGN								SCALE: 2800		NTS	
				 DIRECTOR OF ENGINEERING AND CONSTRUCTION								REVISION		SHEET	
X		XX-XX-XX		REVISION		XX		XX				-		1 OF 1	
REV.		DATE		DESCRIPTION		DES.		ENG.				CADD FILE:		ES2800-99	